

# ILS or LOC RWY 33L

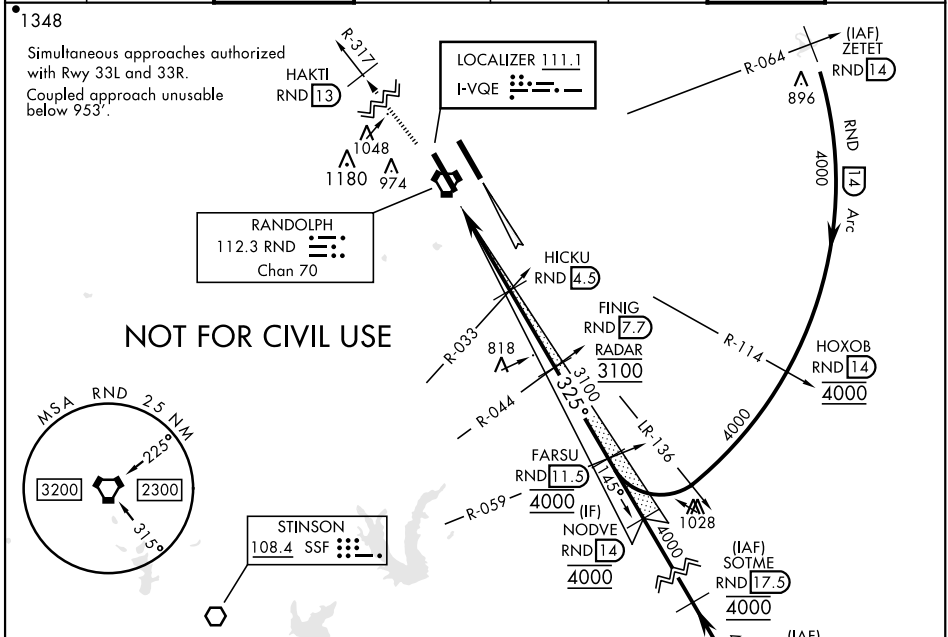
LOC I-VQE <b>111.1</b>	APCH CRS <b>325°</b>	Rwy Idg TDZE Arprt Elev <b>8352</b> <b>733</b> <b>761</b>	[USAF]	RANDOLPH AFB (KRND)
---------------------------	-------------------------	--	--------	---------------------

RADAR or DME required

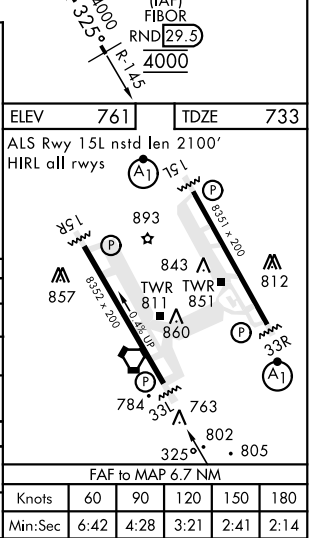
\* Circling not authorized NE of Rwy 15R-33L.

MISSED APPROACH: Climb to 3000 out RND VORTAC R-317 to 13 DME (HAKTI). Expect ATC instructions.

ATIS★ <b>290.525</b>	SAN ANTONIO APP CON <b>128.05 318.1</b>	TOWER★ <b>128.25 294.7</b>	GND CON <b>119.65 275.8</b>	CLNC DEL (RWY 15L-33R) <b>338.35</b>	HANGOVER ATIS★ <b>327.8</b>	HANGOVER TOWER★ <b>120.5 291.1</b>	HANGOVER GND CON <b>124.75 353.75</b>
-------------------------	--	-------------------------------	--------------------------------	---	--------------------------------	---------------------------------------	--



3000 RND R-317	HAKTI RND 13	FINIG RND 7.7	FARSU RND 11.5	NODVE RND 14	
WAPOP RND 1		HICKU RND 4.5	FINIG RADAR 3100	GS 3.00° TCH 47	
0.6 NM		3.5 NM	3.1 NM		
CATEGORY	A	B	C	D	E
S-ILS 33L	933/40		200	(200-¾)	
S-LOC 33L	1080/55		347	(400-1)	
CIRCLING*	1240-1 479 (500-1)	1280-1 519 (600-1)	1500-2 739 (800-2)	1800-3	1039 (1100-3)
WITHOUT LAST STEP DOWN FIX					
S-LOC 33L	1140/55	407 (400-1)	1140/60	407	(400-1½)
CIRCLING*	1240-1 479 (500-1)	1280-1 519 (600-1)	1500-2 739 (800-2)	1800-3	1039 (1100-3)



# ILS or LOC RWY 33L

SC-3, 08 AUG 2024 to 05 SEP 2024

SC-3, 08 AUG 2024 to 05 SEP 2024