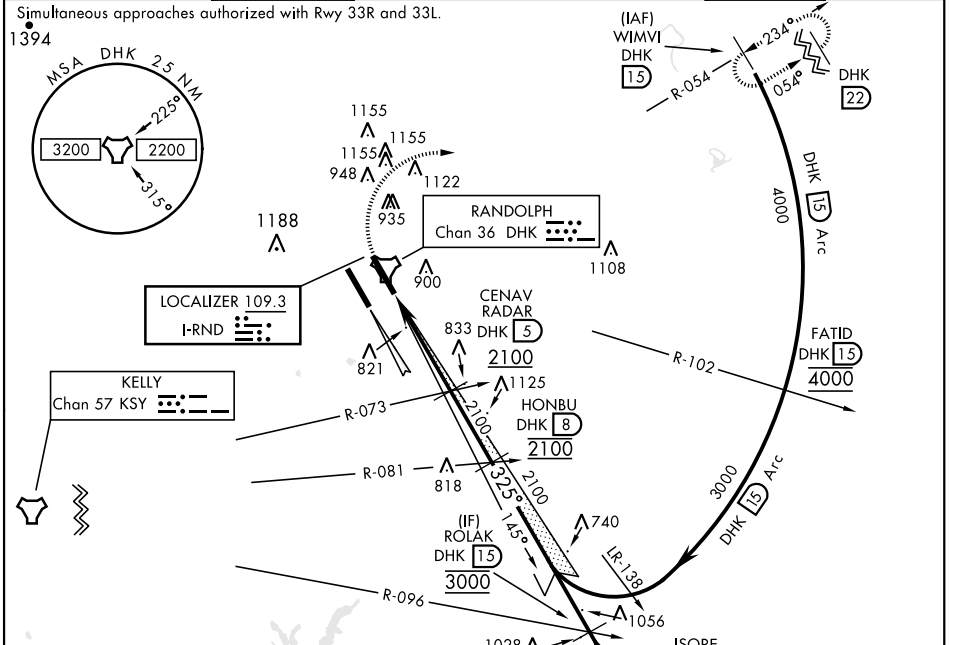


# ILS or LOC Y RWY 33R

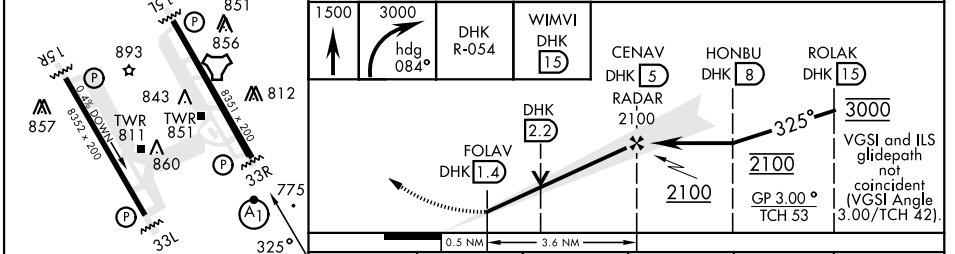
<b>LOC I-RND</b> <b>109.3</b>	<b>APCH CRS</b> <b>325°</b>	<b>Rwy Ildg</b> <b>8351</b>	<b>TDZE</b> <b>733</b>	[USAF]	<b>Arprt Elev</b> <b>761</b>	RANDOLPH AFB (KRND)
----------------------------------	--------------------------------	--------------------------------	---------------------------	--------	---------------------------------	---------------------

<b>RADAR or DME required</b> * When ALS inop, increase RVR to 40 and vis to ¾ mile. ** When ALS inop, increase CAT AB RVR to 55, vis to 1 mile; CAT CDE vis to 1½ miles. *** Circling not authorized SW of Rwy 15L-33R.	<b>ALS-F1</b> 	<b>MISSED APPROACH:</b> Climb to 1500, then climbing right turn hdg 084° to 3000. Intercept DHK R-054 to WIMVI and hold.
--	-------------------	--

<b>ATIS *</b>	<b>SAN ANTONIO APP CON</b>	<b>TOWER *</b>	<b>GND CON</b>	<b>CLNC DEL (RWY 15L-33R)</b>	<b>HANGOVER ATIS *</b>	<b>HANGOVER TOWER *</b>	<b>HANGOVER GND CON</b>
<b>290.525</b>	<b>128.05 318.1</b>	<b>128.25 294.7</b>	<b>119.65 275.8</b>	<b>338.35</b>	<b>327.8</b>	<b>120.5 291.1</b>	<b>124.75 353.75</b>



<b>EMERG SAFE ALT 100 NM 4100</b>	
<b>ELEV 761</b>	<b>TDZE 733</b>



<b>HIRL all rwys</b>					
<b>ALS Rwy 15L nstd len 2100'</b>	821'				
<b>FAF to MAP 3.6 NM</b>					
<b>Knots</b>	60	90	120	150	180
<b>Min:Sec</b>	3:36	2:24	1:48	1:26	1:12
<b>CIRCLING***</b>	1240-1	479 (500-1)	1260-1½ 499 (500-1½)	1800-3	1039 (1100-3)

# ILS or LOC Y RWY 33R

SC-3, 08 AUG 2024 TO 05 SEP 2024

SC-3, 08 AUG 2024 TO 05 SEP 2024