

RNAV (GPS) RWY 15R

APCH CRS 145°	Rwy Idg TDZE Arprt Elev 8352 761 761
-------------------------	--

[USAF]

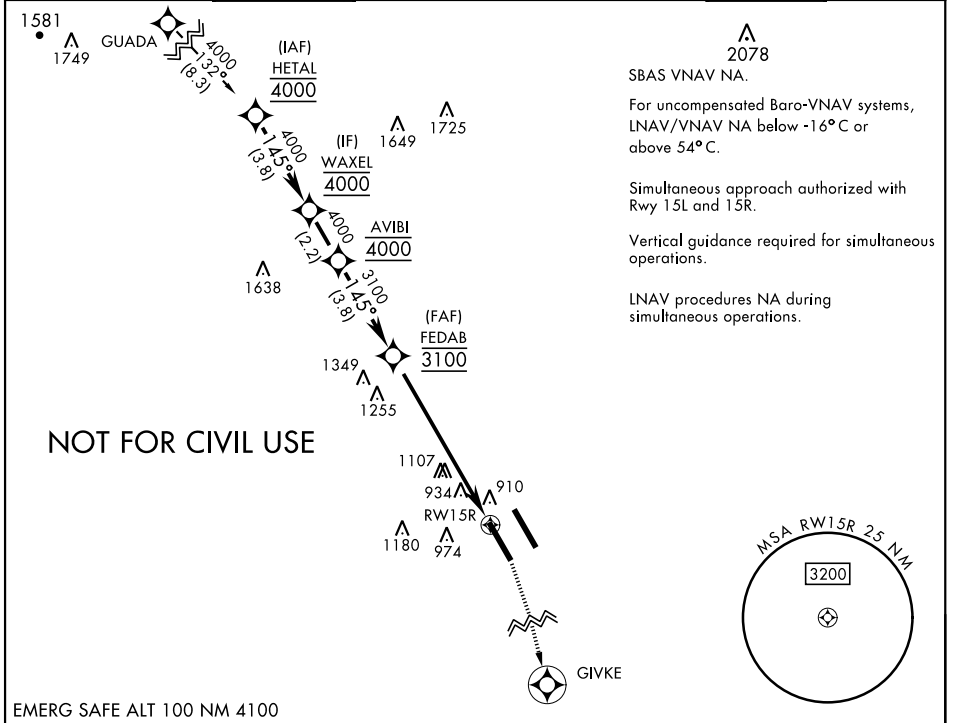
RANDOLPH AFB (KRND)

RNP APCH - GPS

* Circling not authorized NE of Rwy 15R-33L.

MISSED APPROACH: Climb to 1600 then climbing right turn to 3000 direct GIVKE. Expect ATC instructions.

ATIS ★ 290.525	SAN ANTONIO APP CON 128.05 318.1	TOWER ★ 128.25 294.7	GND CON 119.65 275.8	CLNC DEL (RWY 15L-33R) 338.35	HANGOVER ATIS ★ 327.8	HANGOVER TOWER ★ 120.5 291.1	HANGOVER GND CON 124.75 353.75
--------------------------	--	--------------------------------	--------------------------------	---	---------------------------------	--	--

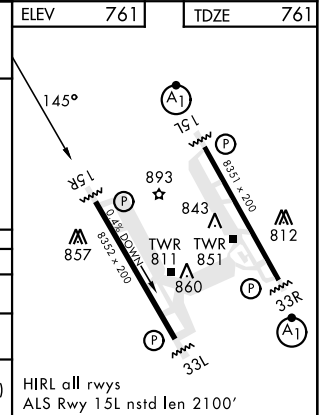


SC-3, 08 AUG 2024 to 05 SEP 2024

SC-3, 08 AUG 2024 to 05 SEP 2024

EMERG SAFE ALT 100 NM 4100

			1600	3000	GIVKE	ELEV 761	TDZE 761
	HETAL	WAXEL	AVIBI	FEDAB			
	4000	4000	4000	3100			
	GP 3.00° TCH 47				2.2 NM to RWY 15R		
				7.2 NM			
CATEGORY	A	B	C	D	E		
LNAV/VNAV DA	1206-1½		445	(500-1½)			
LNAV MDA	1520/55 759 (800-1)	1520-1¼ 759 (800-1¼)	1520-2	759 (800-2)			
CIRCLING*	1520-1 759 (800-1)	1520-1¼ 759 (800-1¼)	1520-2¼ 759 (800-2¼)	1800-3	1039 (1100-3)		
						HIRL all rwy ALS Rwy 15L nstd len 2100'	



RNAV (GPS) RWY 15R