

RNAV (GPS) RWY 33R

APCH CRS 325°	Rwy Idg TDZE Arprt Elev	8351 733 761
-------------------------	-------------------------------	---

[USA#]

RANDOLPH AFB (KRND)

RNP APCH - GPS

*When ALS inop, increase CAT ABCD RVR to 40, vis to ¾ mile;
CAT E RVR to 45, vis to ⅞ mile.
** When ALS inop, increase CAT AB RVR to 55 and vis to 1 mile;
CAT CDE vis to 1 ⅓ miles.

ALSF-1



MISSED APPROACH: Climb to 1500 then climbing right turn to 3000 direct CESVU. Expect ATC instructions.

ATIS ★	SAN ANTONIO APP CON	TOWER ★	GND CON	CLNC DEL (RWY 15L-33R)	HANGOVER ATIS ★	HANGOVER TOWER ★	HANGOVER GND CON
290.525	128.05 318.1	128.25 294.7	119.65 275.8	338.35	327.8	120.5 291.1	124.75 353.75

1096



***Circling not authorized SW of Rwy 15L-33R.

SBAS VNAV NA.

For uncompensated Baro-VNAV systems, LNAV/VNAV NA below -16° C or above 54° C.

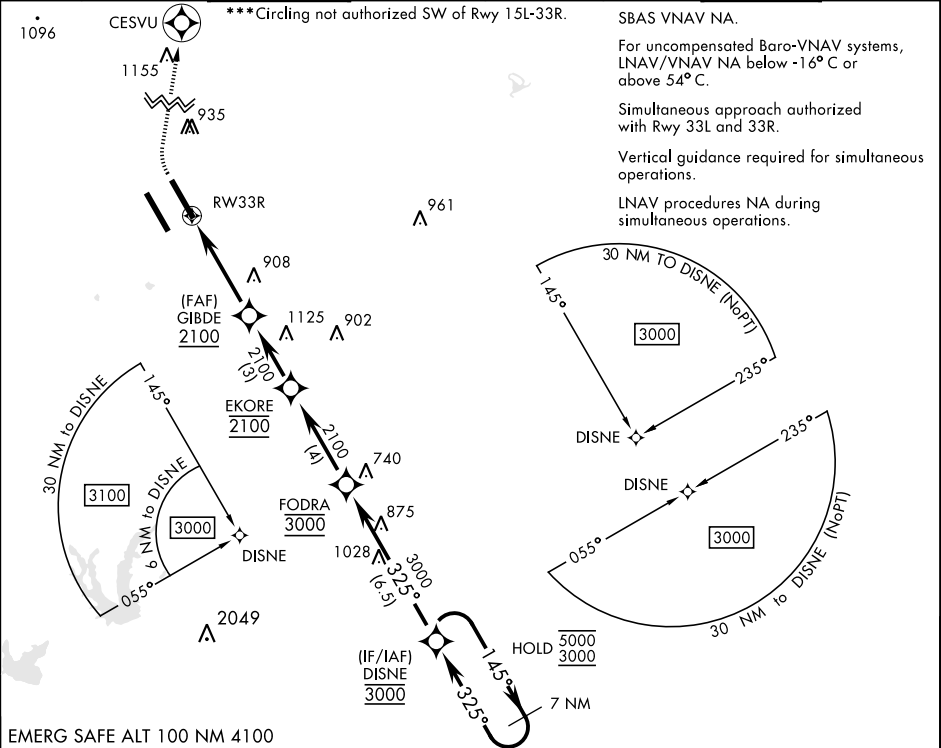
Simultaneous approach authorized with Rwy 33L and 33R.

Vertical guidance required for simultaneous operations.

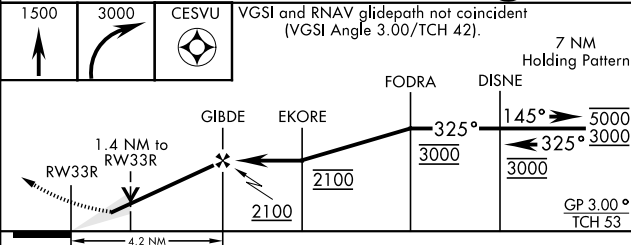
LNAV procedures NA during simultaneous operations.

SC-3, 08 AUG 2024 TO 05 SEP 2024

SC-3, 08 AUG 2024 TO 05 SEP 2024

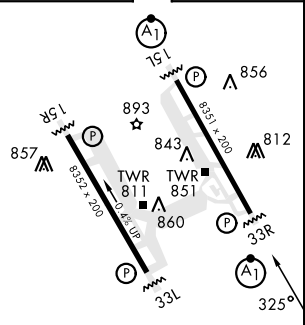


EMERG SAFE ALT 100 NM 4100



ELEV 761	TDZE 733
----------	----------

CATEGORY	A	B	C	D	E
LNAV/VNAV DA*	983/24	250 (300-½)		987/24 254 (300-½)	1025/24 292 (300-½)
LNAV MDA**	1200/24	467 (500-½)		1200/50 467 (500-1)	
CIRCLING***	1240-1 479 (500-1)		1260-1½ 499 (500-1½)	1800-3 1039 (1100-3)	



HIRL all rwys
ALS Rwy 15L nstd len 2100'

RNAV (GPS) RWY 33R