

LOC/DME I-RDM <b>109.1</b> Chan <b>28</b>	APP CRS <b>226°</b>	Rwy Idg TDZE Apt Elev	<b>7031</b> <b>3067</b> <b>3082</b>
-------------------------------------------------	------------------------	-----------------------------	-------------------------------------------

# ILS or LOC RWY 23

ROBERTS FLD (RDM)

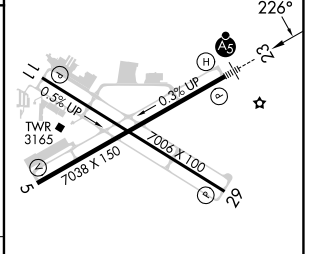
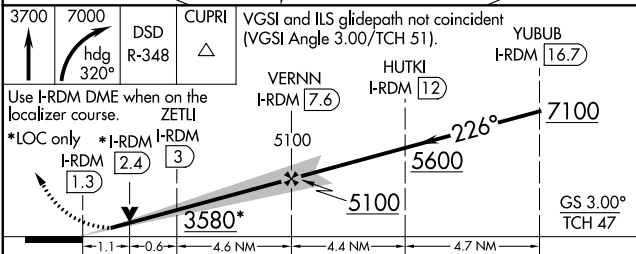
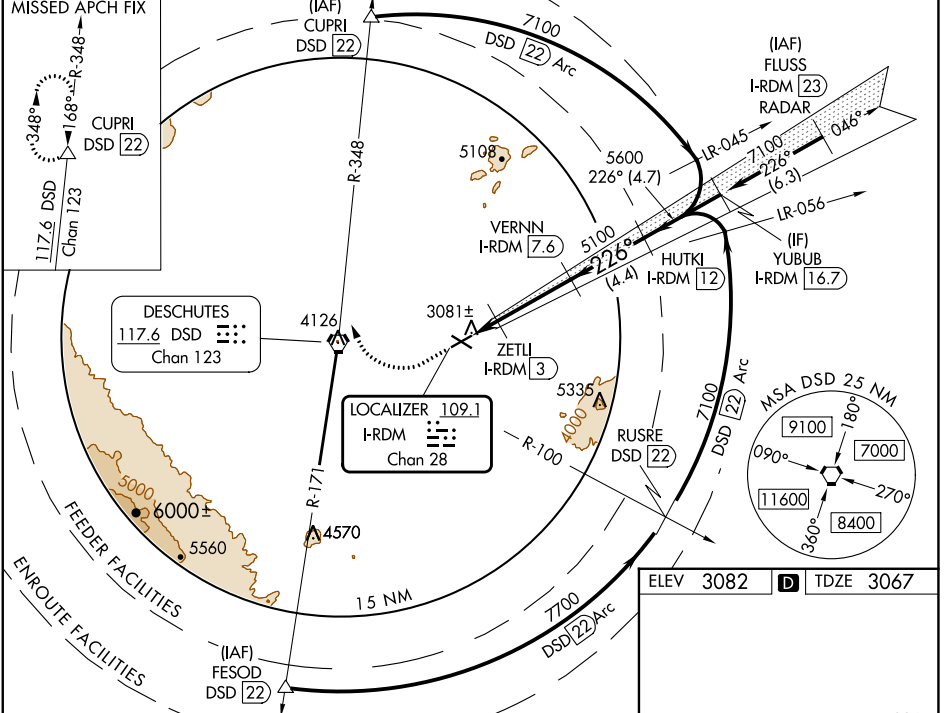
DME required.

**Autopilot coupled approach NA below 4370.** When local altimeter setting not received, use Bend altimeter setting increase S-ILS 23 DA to 3348 feet; increase all MDAs 100 feet increase S-LOC 23 Cat C/D/E visibility  $\frac{3}{8}$  SM and Circling Cats C/D/E visibility  $\frac{1}{2}$  SM. For inop ALS, increase S-ILS 23 Cat E visibility to  $\frac{3}{4}$  SM and S-LOC 23 Cat C/D/E visibility to 1 SM. For inop ALS when using Bend altimeter setting increase S-ILS 23 all Cats visibility to  $\frac{7}{8}$  SM and increase S-LOC 23 Cats C/D/E visibility to  $\frac{1}{8}$  SM. VDP NA when using Bend altimeter setting.

**MISSED APPROACH:** Climb to 3700 then climbing right turn to 7000 on heading 320° and DSD VORTAC R-348 to CUPRI/DSD 22 DME and hold.

MALSR  
AS

ATIS <b>119.025</b>	SEATTLE CENTER <b>126.15 269.475</b>	REDMOND TOWER* <b>124.5 (CTAF) 0 256.8</b>	GND CON <b>121.8</b>	UNICOM <b>122.95</b>
------------------------	-----------------------------------------	-----------------------------------------------	-------------------------	-------------------------



CATEGORY	A	B	C	D	E
S-ILS 23	3267- $\frac{1}{2}$ 200 (200- $\frac{1}{2}$ )				
S-LOC 23	3440- $\frac{1}{2}$	373 (400- $\frac{1}{2}$ )	3440- $\frac{5}{8}$ 373 (400- $\frac{5}{8}$ )		
CIRCLING	3540-1 458 (500-1)	3560-1 478 (500-1)	3640-1 $\frac{1}{2}$ 558 (600-1 $\frac{1}{2}$ )	3740-2 658 (700-2)	3820-2 $\frac{1}{2}$ 738 (800-2 $\frac{1}{2}$ )

REIL Rwy 5, 11, and 29  
HIRL Rwy 5-23  
MIRL Rwy 11-29

# ROBERTS FLD (RDM)

## ILS or LOC RWY 23

NW-1, 08 AUG 2024 to 05 SEP 2024

NW-1, 08 AUG 2024 to 05 SEP 2024