

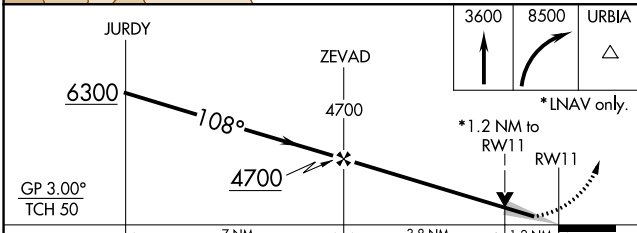
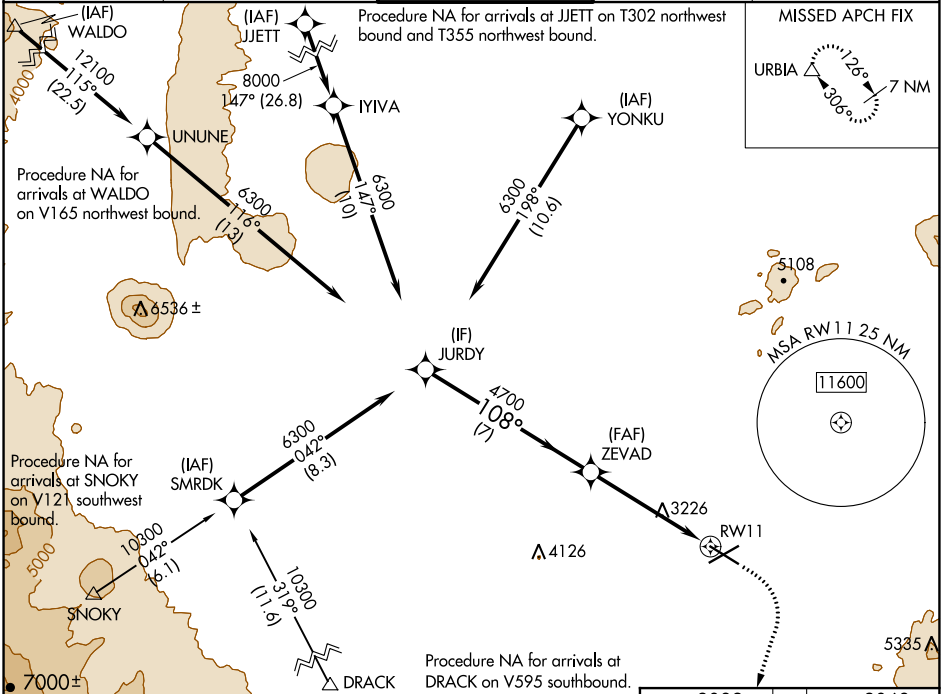
WAAS CH <b>53514</b> <b>W11A</b>	APP CRS <b>108°</b>	Rwy Idg TDZE Apt Elev	<b>7006</b> <b>3068</b> <b>3082</b>
--	------------------------	-----------------------------	---

# RNAV (GPS) RWY 11

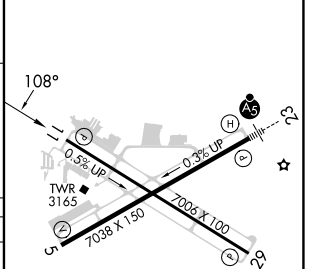
ROBERTS FLD (RDM)

RNP APCH.		MISSED APPROACH: Climb to 3600 then climbing right turn to 8500 direct URBIA and hold, continue climb-in-hold to 8500.		
<p>For uncompensated Baro-VNAV systems, LNAV/VNAV NA below -22°C or above 54°C.</p>				

ATIS <b>119.025</b>	SEATTLE CENTER <b>126.15 269.475</b>	REDMOND TOWER* <b>124.5 (CTAF) 256.8</b>	GND CON <b>121.8</b>	UNICOM <b>122.95</b>
------------------------	---	---	-------------------------	-------------------------



ELEV 3082	D	TDZE 3068
-----------	---	-----------



CATEGORY	A	B	C	D
LPV DA		3268- <sup>3</sup> / <sub>4</sub>	200 (200- <sup>3</sup> / <sub>4</sub> )	
LNAV/VNAV DA		3370- <sup>7</sup> / <sub>8</sub>	302 (300- <sup>7</sup> / <sub>8</sub> )	
LNAV MDA	3480-1	412 (400-1)	3480-1 <sup>1</sup> / <sub>8</sub>	412 (400-1 <sup>1</sup> / <sub>8</sub> )
CIRCLING	3540-1 458 (500-1)	3560-1 478 (500-1)	3640-1 <sup>1</sup> / <sub>2</sub> 558 (600-1 <sup>1</sup> / <sub>2</sub> )	3740-2 658 (700-2)

REIL Rwy 5, 11, and 29  
 HIRL Rwy 5-23  
 MIRL Rwy 11-29

NW-1, 08 AUG 2024 to 05 SEP 2024

NW-1, 08 AUG 2024 to 05 SEP 2024