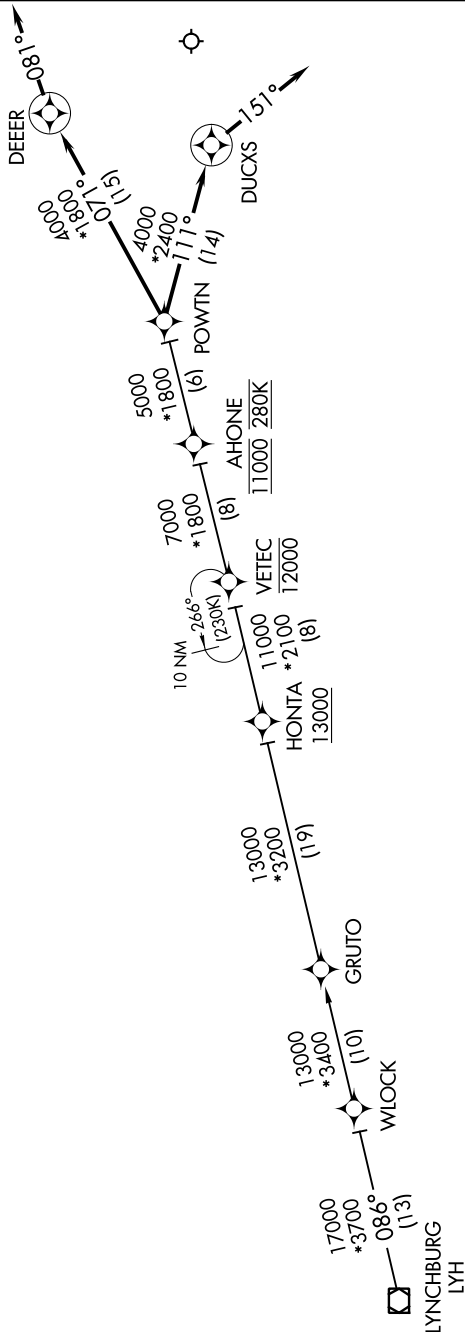


POWTN FIVE ARRIVAL (RNAV)

NE-3, 08 AUG 2024 to 05 SEP 2024

POTOMAC APP CON
126.75 307.2
ATIS
119.15 263.025



ARRIVAL ROUTE DESCRIPTION

LYNCHBURG TRANSITION (LYH:POWTN5)

LANDING NORTH RUNWAYS 2, 34: From POWTN on track 111° to DUCXS, then on heading 151° or as assigned by ATC. Expect RADAR vectors to final approach course.

LANDING SOUTH RUNWAYS 16, 20: From POWTN on track 071° to DEEER, then on heading 081° or as assigned by ATC. Expect RADAR vectors to final approach course.



NOTE: RADAR required.

NOTE: RNAV 1.

NOTE: DME/DME/IRU or GPS required.

NOTE: Turbojet aircraft only.

NOTE: Maintain last ATC assigned altitude until cleared to "descend via the POWTN STAR".
ARTCC will issue landing direction assignment (north or south) and Potomac TRACON will issue runway assignments.

NOTE: Chart not to scale.

POWTN FIVE ARRIVAL (RNAV)

NE-3, 08 AUG 2024 to 05 SEP 2024