

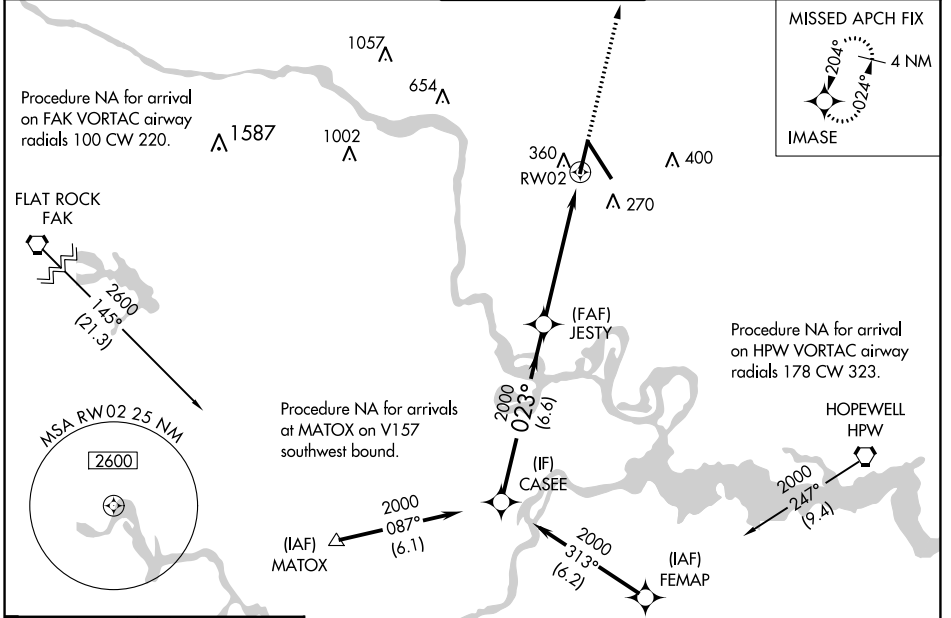
WAAS CH 72716 W02A	APP CRS 023°	Rwy Idg TDZE 161 Apt Elev 168	6607
--	------------------------	---	-------------

RNAV (GPS) Z RWY 2

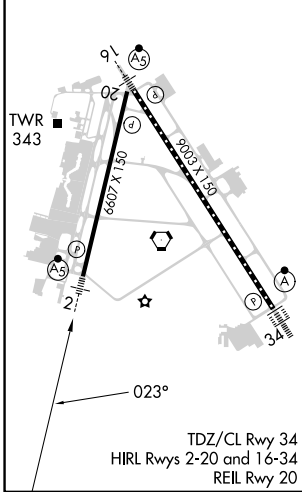
RICHMOND INTL (RIC)

RNP APCH.	MALSR	MISSED APPROACH: Climb to 2000 direct IMASE and hold.
<p>▼ For uncompensated Baro-VNAV systems, LNAV/VNAV NA below -11°C (13°F) or above 54°C (130°F). Rwy 2 helicopter visibility reduction below ¾ SM NA.</p>		

ATIS 119.15 263.025	POTOMAC APP CON 126.4 282.375 (001°-185°) 126.75 307.2 (186°-360°)	RICHMOND TOWER 121.1 257.8	GND CON 121.9 348.6	CLNC DEL 127.55 348.6
-------------------------------	--	--------------------------------------	-------------------------------	---------------------------------



ELEV 168	D	TDZE 161
-----------------	----------	-----------------



	CASEE	JESTY	2000	IMASE
	2000	023°	2000	IMASE
	GP 3.00°			
	TCH 50			
	6.6 NM	4.3 NM	1.3 NM	
CATEGORY	A	B	C	D
LPV DA		457-¾	296 (300-¾)	
LNAV/VNAV DA		568-⅞	407 (400-⅞)	
LNAV MDA	620-¾	459 (500-¾)	620-1	459 (500-1)
C CIRCLING	660-1	492 (500-1)	700-1½	720-2
			532 (600-1½)	552 (600-2)

NE-3, 08 AUG 2024 to 05 SEP 2024

NE-3, 08 AUG 2024 to 05 SEP 2024