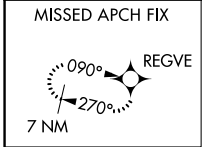


WAAS CH 49216 W27A	APP CRS 270°	Rwy Idg 10000 TDZE 6765 Apr Elev 6765
---------------------------------	------------------------	--

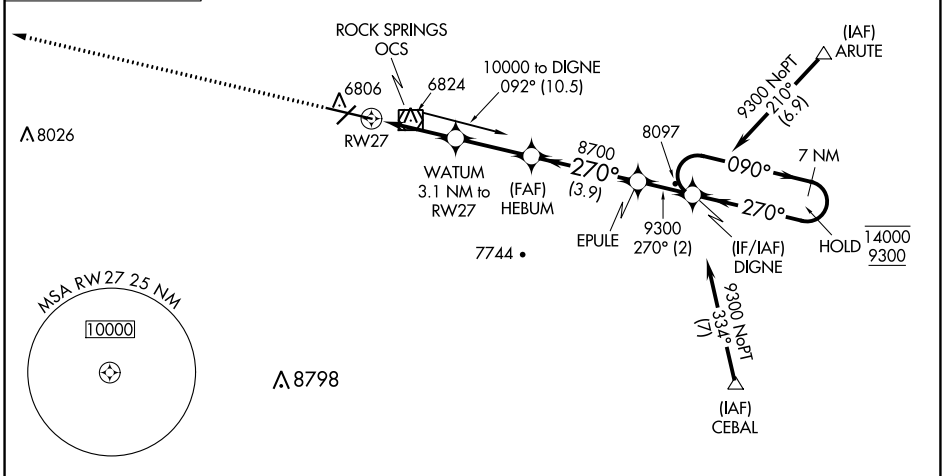
RNAV (GPS) RWY 27

SOUTHWEST WYOMING RGNL (R.K.S)

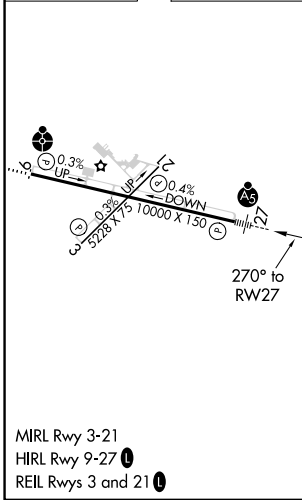
RNP APCH.	MALSR	MISSED APPROACH: Climb to 9800 direct REGVE and hold.
<p>▼ For uncompensated Baro-VNAV systems, LNAV/VNAV NA below -27°C or above 44°C. For inop ALS increase LNAV/VNAV all Cats visibility to ½ SM.</p>		
ASOS 118.375	SALT LAKE CENTER 124.35 353.5	UNICOM 122.8 (CTAF) 0



Procedure NA for arrivals at OCS VOR/DME on V235 southwest bound, V187 north and southbound and T298 southwest bound.



ELEV 6765	D	TDZE 6765
-----------	---	-----------



9800	REGVE	WATUM 3.1 NM to RW27	HEBUM 8700	EPULE	DIGNE	7 NM Holding Pattern
*LNAV only.		*0.9 NM to RW27	8700	9300	14000	9300
0.3% UP		0.4% DOWN	0.3% UP	0.3% UP	0.3% UP	0.3% UP
5288		10000 X 150	270° to RW27			
7800*		7800	8700	9300	14000	9300
0.9 NM		2.2 NM	2.8 NM	3.9 NM	2 NM	
CATEGORY	A	B	C	D		
LPV DA	6965-½		200 (200-½)			
LNAV/VNAV DA	7036-½		271 (300-½)			
LNAV MDA	7100-½		335 (400-½)			
CIRCLING	7140-1 375 (400-1)	7220-1 455 (500-1)	7220-1½ 455 (500-1½)	7540-2 ½ 775 (800-2 ½)	GP 3.00° TCH 55	

NW-1, 08 AUG 2024 to 05 SEP 2024

NW-1, 08 AUG 2024 to 05 SEP 2024