

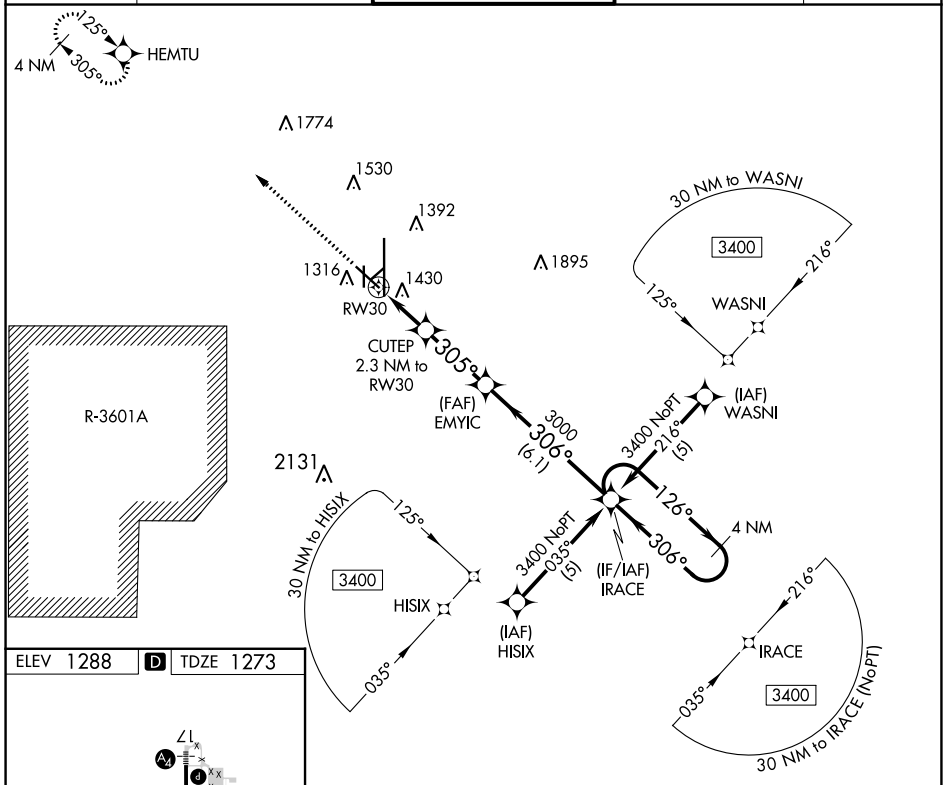
APP CRS <b>305°</b>	Rwy Idg TDZE Apt Elev	<b>6510</b> <b>1273</b> <b>1288</b>
------------------------	-----------------------------	---

**RNAV (GPS) RWY 30**  
SALINA RGNL (SLN)

**⚠** Circling NA for Cat D southwest of runway 12-30.  
**⚠** DME/DME RNP-0.3 NA.

MISSED APPROACH: Climb to 3400 direct HEMTU and hold.

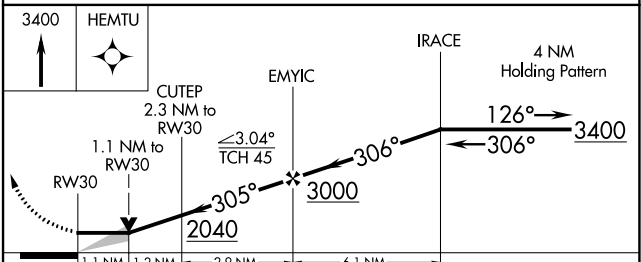
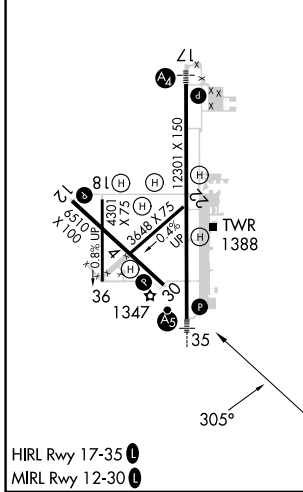
ATIS <b>120.15</b>	KANSAS CITY CENTER <b>134.9 363.2</b>	SALINA TOWER ★ <b>119.3 (CTAF) 0 257.7</b>	GND CON <b>121.9 360.8</b>	UNICOM <b>122.95</b>
-----------------------	--	---	-------------------------------	-------------------------



NC-2, 08 AUG 2024 to 05 SEP 2024

NC-2, 08 AUG 2024 to 05 SEP 2024

ELEV 1288	<b>D</b>	TDZE 1273
-----------	----------	-----------



CATEGORY	A	B	C	D
LNAV MDA	1680-1	407 (400-1)	1680-1½	407 (400-1½)
CIRCLING	1820-1 532 (600-1)	1840-1 552 (600-1)	1860-1½ 572 (600-1½)	1860-2 572 (600-2)