

LOC/DME I-BNT 111.5 Chan 52	APP CRS 169°	Rwy Idg TDZE Apt Elev	9596 4219 4227
---	------------------------	-----------------------------	---

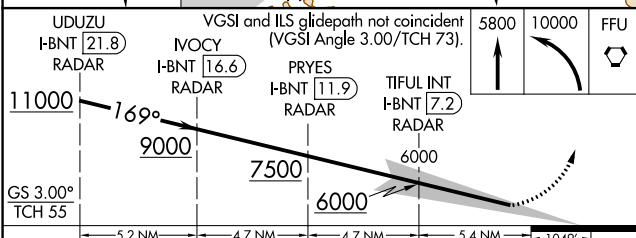
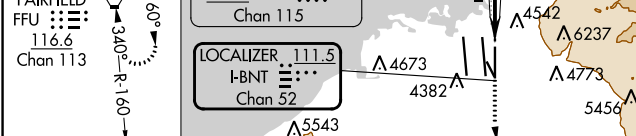
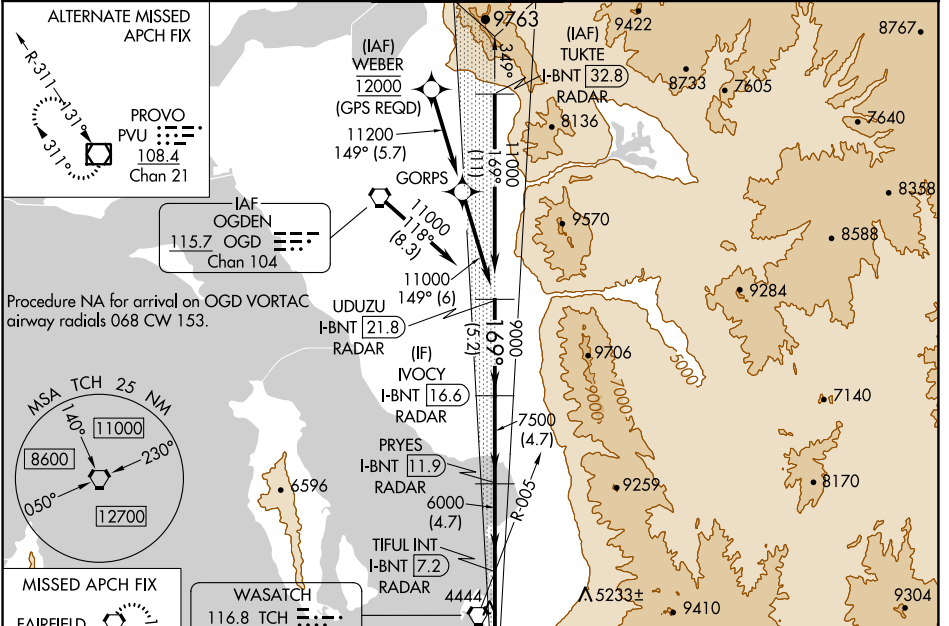
ILS RWY 17 (SA CAT I & II)

SALT LAKE CITY INTL (SLC)

▼ DME or RADAR required. Simultaneous approach authorized. SA CAT I: Requires specific OPSPEC, MSPEC, or LOA approval and use of HUD to DH. SA CAT II: Reduced lighting: Requires specific OPSPEC, MSPEC, or LOA approval and use of autoland or HUD to touchdown.

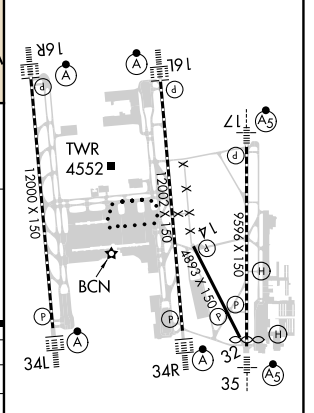
MALS MISSED APPROACH: Climb to 5800 then climbing left turn to 10000 direct FFU VORTAC and hold.

D-ATIS 124.75 125.625	SALT LAKE CITY APP CON 125.7 284.6	SALT LAKE CITY TOWER 118.3 257.8	GND CON 121.9 348.6	CLNC DEL 127.3 379.975	CPDLC
---------------------------------	--	--	-------------------------------	----------------------------------	-------



CATEGORY	A	B	C	D
S-ILS 17	SA CAT I	RA 149/14	150	DA 4369
S-ILS 17	SA CAT II	RA 99/12	100	DA 4319

ELEV 4227	D	TDZE 4219
-----------	---	-----------



HIRL all Rwwys
TDZ/CL Rwwys 16L, 16R, 17, 35, 34L, and 34R

SW-4, 08 AUG 2024 to 05 SEP 2024

SW-4, 08 AUG 2024 to 05 SEP 2024

SA CATEGORY I & II ILS - SPECIAL AIRCREW & AIRCRAFT CERTIFICATION REQUIRED