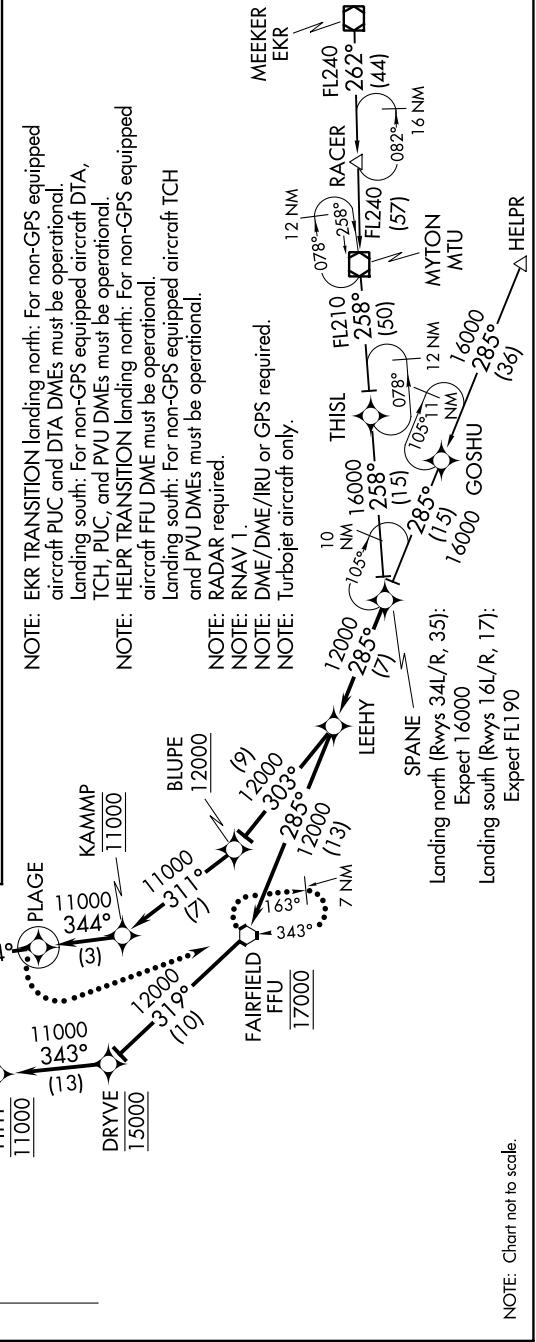
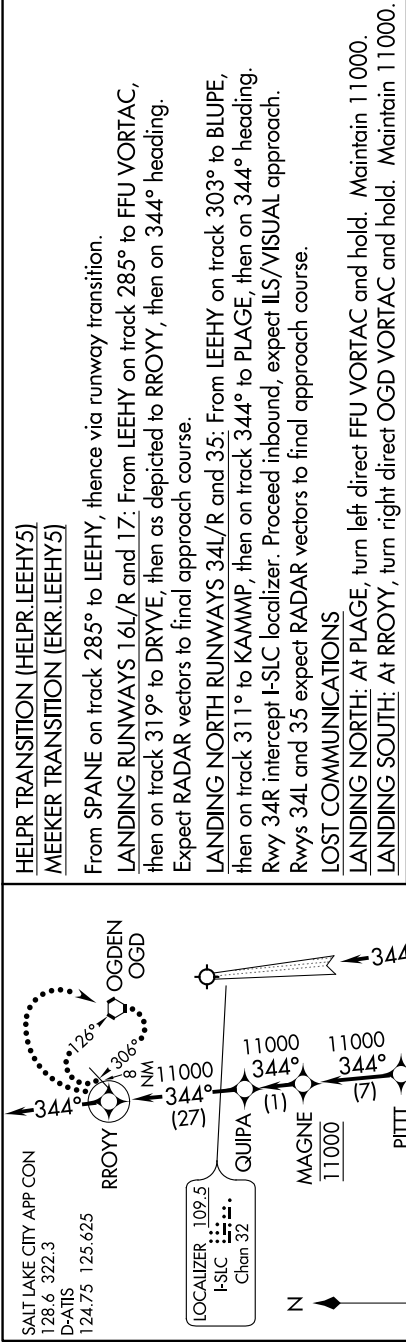


# LEEHY FIVE ARRIVAL (RNAV)

AL-365 (FAA)

SALT LAKE CITY INTL (SLC)  
SALT LAKE CITY, UTAH

SW-4, 08 AUG 2024 to 05 SEP 2024



NOTE: EKR TRANSITION landing north: For non-GPS equipped aircraft PUC and DTA DMEs must be operational.  
 Landing south: For non-GPS equipped aircraft DTA, TCH, PUC, and PVU DMEs must be operational.

NOTE: HELPR TRANSITION landing north: For non-GPS equipped aircraft FFU DME must be operational.  
 Landing south: For non-GPS equipped aircraft TCH and PVU DMEs must be operational.

NOTE: RADAR required.

NOTE: RNAV 1

NOTE: DME/DME/IRU or GPS required.

NOTE: Turbojet aircraft only.

Landing north (Rwys 34L/R, 35):  
Expect 16000

Landing south (Rwys 16L/R, 17):  
Expect FL190

NOTE: Chart not to scale.

# LEEHY FIVE ARRIVAL (RNAV)

(SPANE.LEEHY5) 17AUG17

SALT LAKE CITY, UTAH  
SALT LAKE CITY INTL (SLC)

SW-4, 08 AUG 2024 to 05 SEP 2024