

ARRIVAL ROUTE DESCRIPTION

BRYCE CANYON TRANSITION (BCE.QWENN5)

MILFORD TRANSITION (MLF.QWENN5)

LANDING NORTH RUNWAYS 34R/L and 35: From QWENN on track 001° to FFU VORTAC, then as depicted to PLAGE, then on 344° heading. Rwy 34R intercept I-SLC localizer. Proceed inbound, expect ILS/Visual approach. Rws 34L and 35 expect RADAR vectors to final approach course.

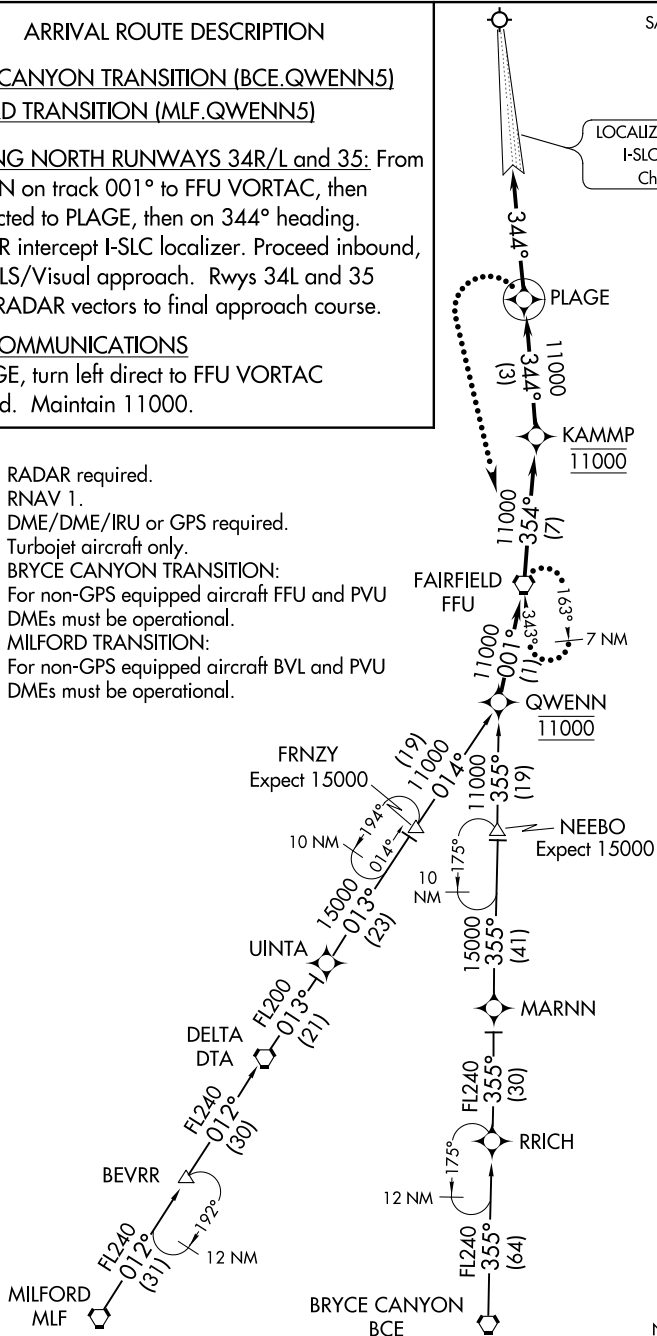
LOST COMMUNICATIONS

At PLAGE, turn left direct to FFU VORTAC and hold. Maintain 11000.

- NOTE: RADAR required.
- NOTE: RNAV 1.
- NOTE: DME/DME/IRU or GPS required.
- NOTE: Turbojet aircraft only.
- NOTE: BRYCE CANYON TRANSITION:
For non-GPS equipped aircraft FFU and PVU DMEs must be operational.
- NOTE: MILFORD TRANSITION:
For non-GPS equipped aircraft BVL and PVU DMEs must be operational.

SALT LAKE CITY APP CON
128.6 322.3
D-ATIS
124.75 125.625

LOCALIZER 109.5
I-SLC
Chan 32



NOTE: Chart not to scale.

SW-4, 08 AUG 2024 to 05 SEP 2024

SW-4, 08 AUG 2024 to 05 SEP 2024