

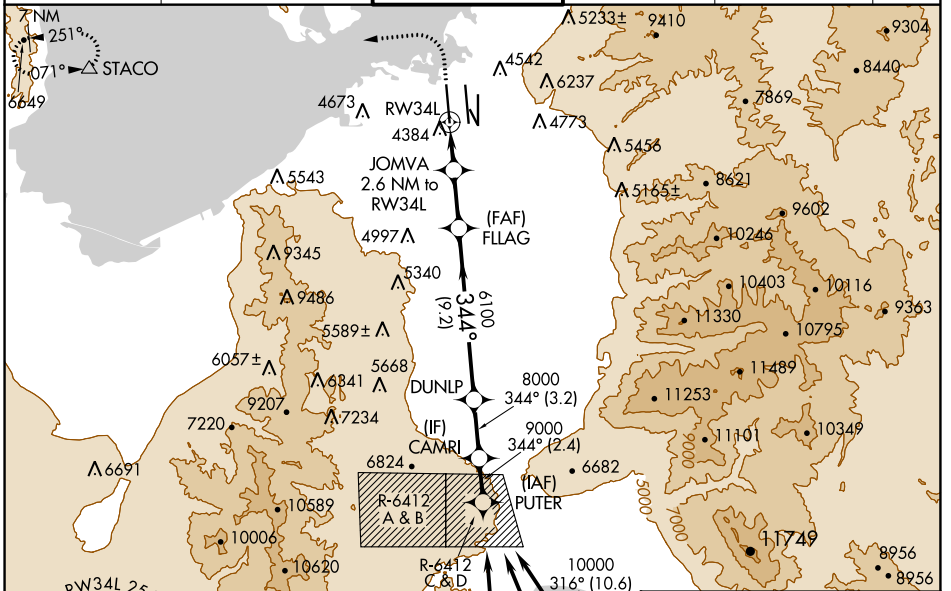
WAAS CH 70432 W34B	APP CRS 344°	Rwy Idg TDZE Apt Elev	12000 4229 4231
--	------------------------	-----------------------------	--

RNAV (GPS) RWY 34L

SALT LAKE CITY INTL (SLC)

RNP APCH.	ALSF-2	MISSED APPROACH: Climb to 4800 then climbing left turn to 8100 direct STACO and hold.
<p>Simultaneous approach authorized. Use of FD or AP providing RNAV track guidance required during simultaneous operations. LNAV procedure NA during simultaneous operations. For uncompensated Baro-VNAV systems, LNAV/VNAV NA below -15°C or above 49°C. For inop ALS, increase LPV Cat E visibility to RVR 4000, LNAV/VNAV all Cats visibility to RVR 6000, LNAV Cat E visibility to 1½ SM.</p>		

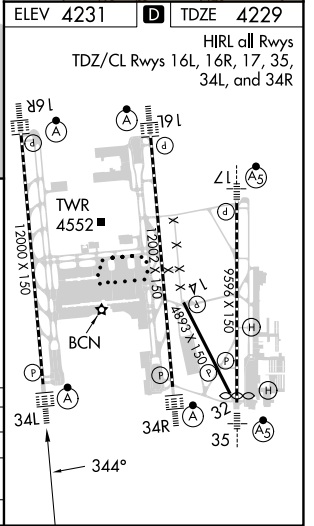
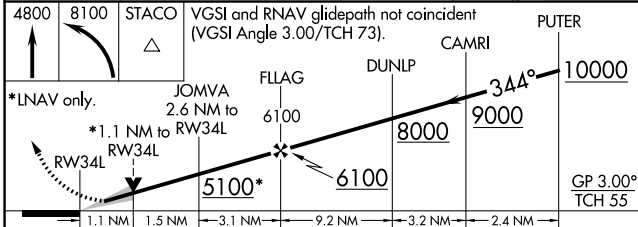
D-ATIS 124.75 125.625	SALT LAKE CITY APP CON 125.7 284.6	SALT LAKE CITY TOWER 132.65 336.4	GND CON 123.775 348.6	CLNC DEL 127.3 379.975	CPDLC
---------------------------------	--	---	---------------------------------	----------------------------------	-------



SW-4, 08 AUG 2024 to 05 SEP 2024

SW-4, 08 AUG 2024 to 05 SEP 2024

ELEV 4231	TDZE 4229
HIRL all Rwy's TDZ/CL Rwy's 16L, 16R, 17, 35, 34L, and 34R	



CATEGORY	A	B	C	D	E
LPV DA		4429/18	200 (200-½)		
LNAV/VNAV DA		4640/40	411 (500-¾)		
LNAV MDA	4660/24	431 (500-½)	4660/40	431 (500-¾)	