

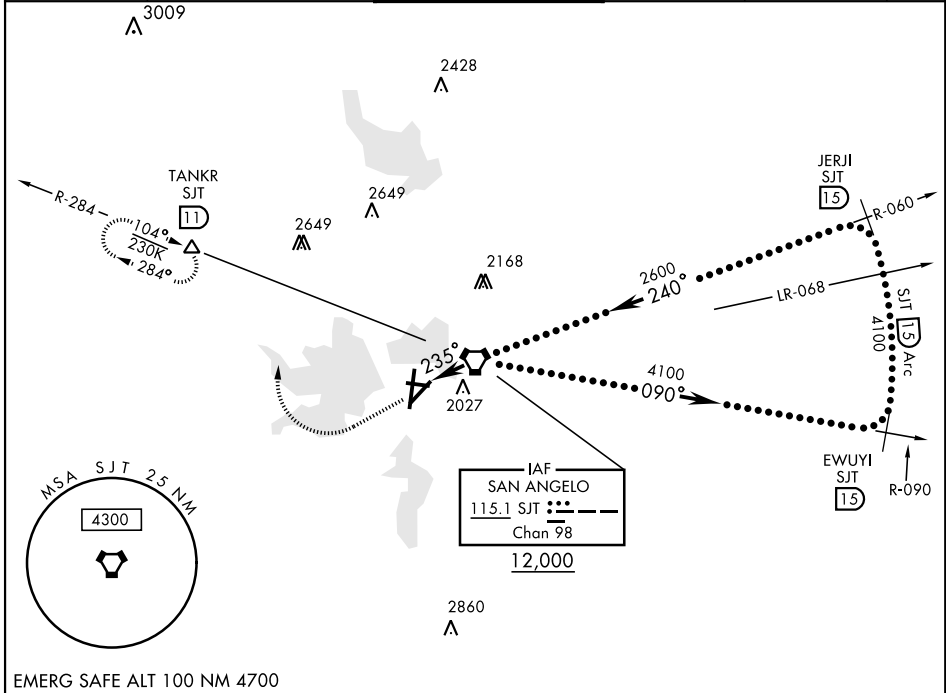
HI-VOR Z or TACAN RWY 21

VORTAC SJT 115.1 Chan 98	APCH CRS 235°	Rwy Idg TDZE 1906 Arpt Elev 1919	AL-367 [USAF]	SAN ANGELO RGNL MATHIS FLD (KSJT)
--	-------------------------	--	---------------	-----------------------------------

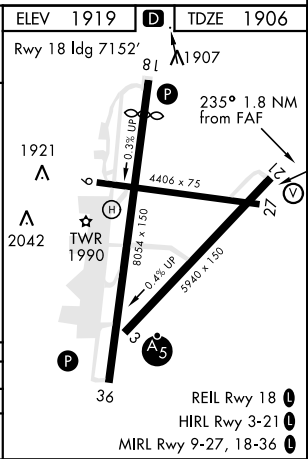
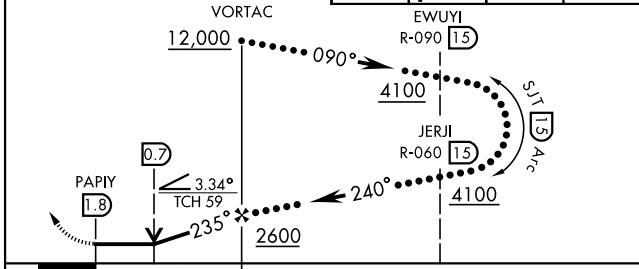
DME required.
* Circling NA for CAT D W of Rwy 18-36.

MISSED APPROACH: Climb to 3000 then climbing right turn to 4400 on heading 360° and SJT VORTAC R-284 to TANKR INT/11 DME and hold, continue climb-in-hold to 4400.

ATIS 128.45 319.0	SAN ANGELO APP CON 125.35 354.1	MATHIS TOWER ★ 118.3 0 (CTAF) 284.7	GND CON 121.9 348.6	UNICOM 122.95	ASR
-----------------------------	---	--	-------------------------------	-------------------------	-----



VGSI and descent angles not coincident (VGSI Angle 3.00/TCH 52)	3000	4400	SJT R-284	TANKR SJT (11)
---	------	------	-----------	----------------



CATEGORY	C	D	E
S-21	2300-1½	394 (400-1½)	
CIRCLING*	2500-1½ 581 (600-1½)	2580-2 661 (700-2)	NOT AUTHORIZED

HI-VOR Z or TACAN RWY 21

SC-3, 08 AUG 2024 to 05 SEP 2024

SC-3, 08 AUG 2024 to 05 SEP 2024