

SAN ANTONIO, TEXAS

RNAV (GPS) RWY 34

WAAS CH 65364 W 34A	APCH CRS 338°	Rwy ldg TDZE Arprt Elev	11,550 660 690
---	-------------------------	-------------------------------	---

AL-371 (USAF)

KELLY FLD (KSKF)

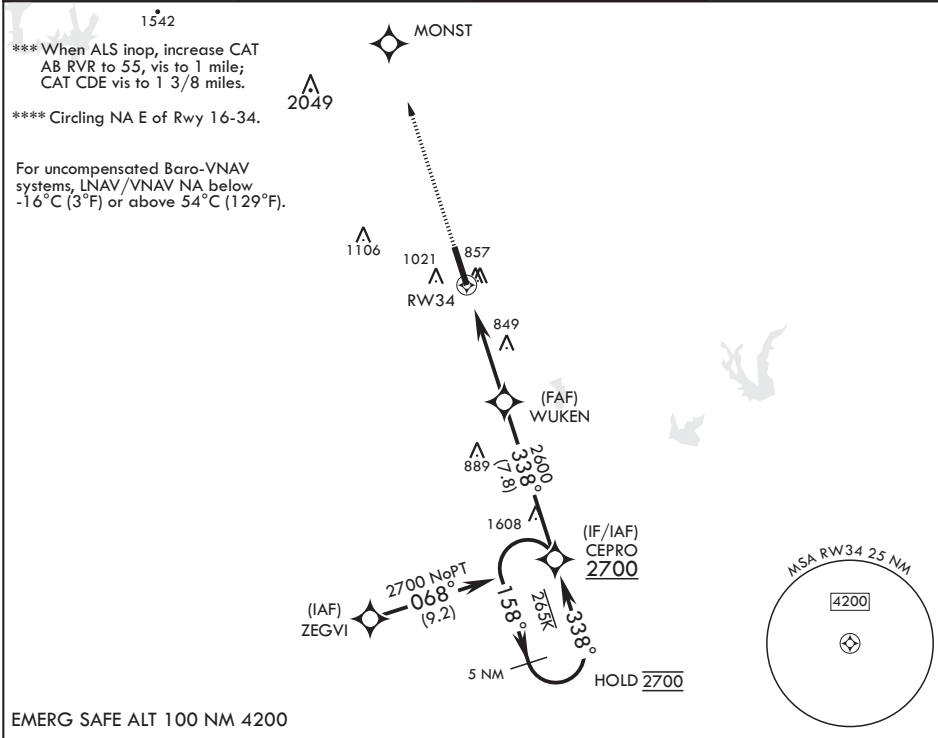
RNP APCH

▼ * When ALS inop, increase RVR to 40, vis to 3/4 miles.
 ** When ALS inop, increase vis to 1 3/8 miles.

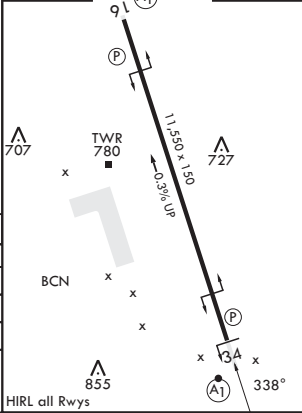
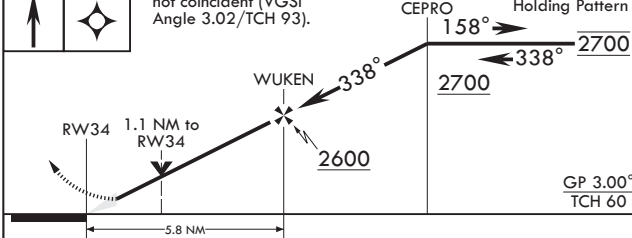
ALSF-1

MISSED APPROACH: Climb to 3000 direct MONST. Expect ATC instructions.

ATIS 120.45 273.5	SAN ANTONIO APP CON 118.05 353.5	KELLY TOWER 124.3 322.35	GND CON 121.8 289.4
-----------------------------	--	------------------------------------	-------------------------------



EMERG SAFE ALT 100 NM 4200



CATEGORY	A	B	C	D	E
LPV DA*	860/24		200	(200-½)	
LNAV/VNAV DA**	1120/45		460	(500-¾)	
LNAV MDA***	1120/24 460 (500-½)		1120/45	460 (500-¾)	
CIRCLING****	1200-1	1280-1	1340-1¾	1400-2¼	1900-3
	(600-1)	(600-1)	(700-1¼)	(800-2¼)	(1300-3)

SAN ANTONIO, TEXAS
Amdt 2 23FEB23

29°23'N - 98°35'W

KELLY FLD (KSKF)

RNAV (GPS) RWY 34

SC-3, 08 AUG 2024 to 05 SEP 2024

SC-3, 08 AUG 2024 to 05 SEP 2024