

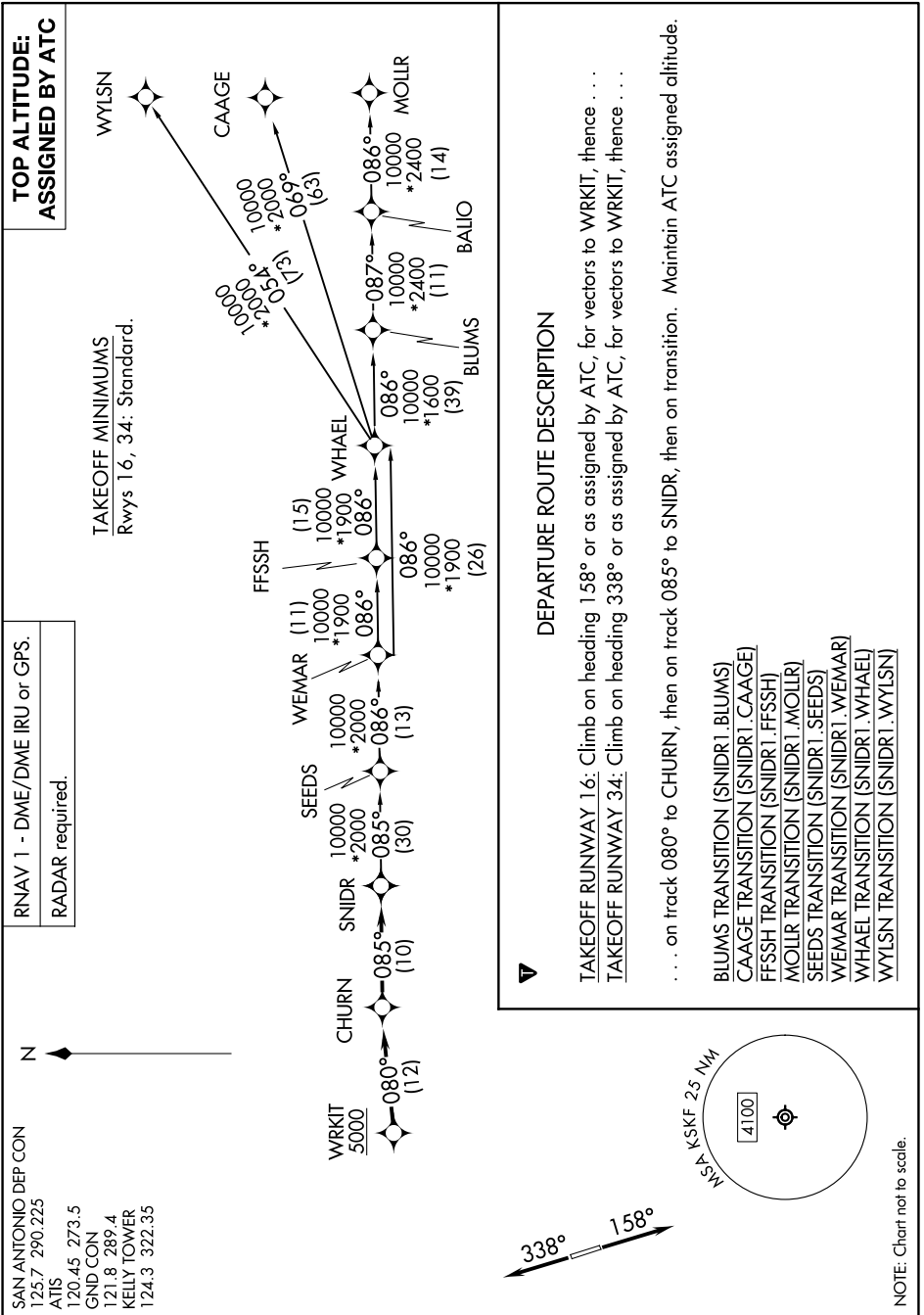
(SNIDR1.SNIDR) 24025

# SNIDR ONE DEPARTURE (RNAV)

AL-371 (FAA)

KELLY FLD (SKF)  
SAN ANTONIO, TEXAS

SC-3, 08 AUG 2024 to 05 SEP 2024



RNAV 1 - DME/DME IRU or GPS.  
RADAR required.

SAN ANTONIO DEP CON  
123.7 290.225  
ATIS  
120.45 273.5  
GND CON  
121.8 289.4  
KELLY TOWER  
124.3 322.35

N

TOP ALTITUDE:  
ASSIGNED BY ATC

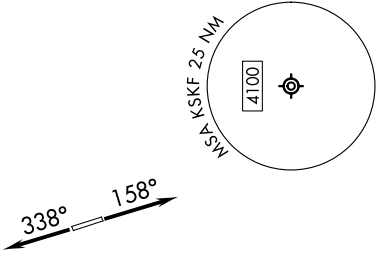
TAKEOFF MINIMUMS  
Rwys 16, 34: Standard.



### DEPARTURE ROUTE DESCRIPTION

TAKEOFF RUNWAY 16: Climb on heading 158° or as assigned by ATC, for vectors to WRKIT, thence . . .  
 TAKEOFF RUNWAY 34: Climb on heading 338° or as assigned by ATC, for vectors to WRKIT, thence . . .  
 . . . on track 080° to CHURN, then on track 085° to SNIDR, then on transition. Maintain ATC assigned altitude.

- BLUMS TRANSITION (SNIDR1.BLUMS)
- CAAGE TRANSITION (SNIDR1.CAAGE)
- FFSSH TRANSITION (SNIDR1.FFSSH)
- MOLLR TRANSITION (SNIDR1.MOLLR)
- SEEDS TRANSITION (SNIDR1.SEEDS)
- WEMAR TRANSITION (SNIDR1.WEMAR)
- WHAEL TRANSITION (SNIDR1.WHAEL)
- WYLSN TRANSITION (SNIDR1.WYLSN)



NOTE: Chart not to scale.

SNIDR ONE DEPARTURE (RNAV)  
(SNIDR1.SNIDR) 25JAN24

SAN ANTONIO, TEXAS  
KELLY FLD (SKF)

SC-3, 08 AUG 2024 to 05 SEP 2024