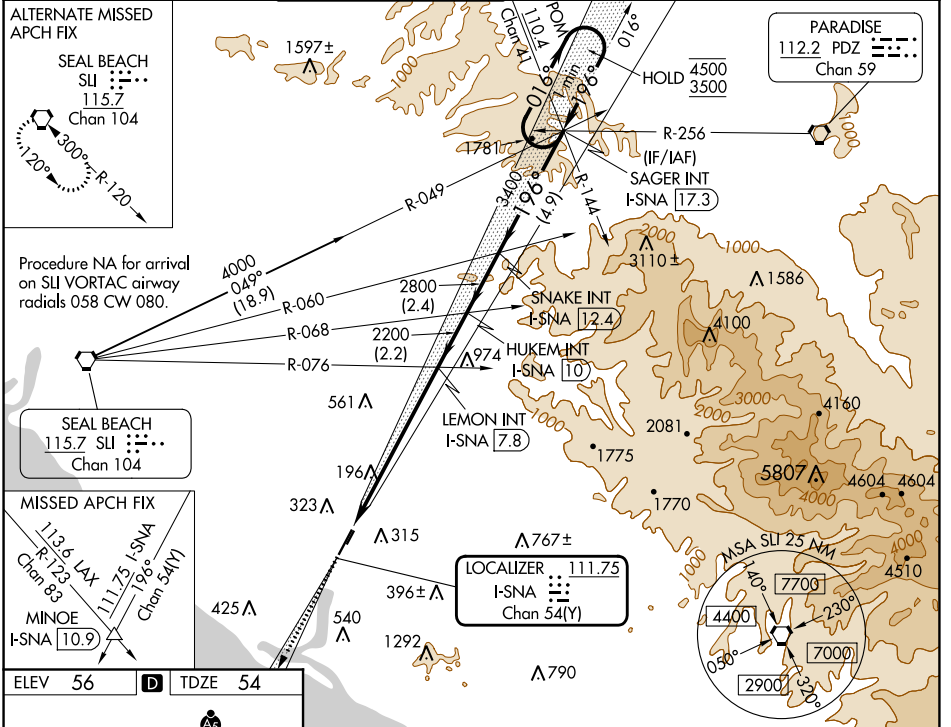


LOC/DME I-SNA 111.75 Chan 54(Y)	APP CRS 196°	Rwy Idg TDZE Apt Elev	5700 54 56
---	------------------------	-----------------------------	---------------------------------------

ILS RWY 20R (SA CAT I)

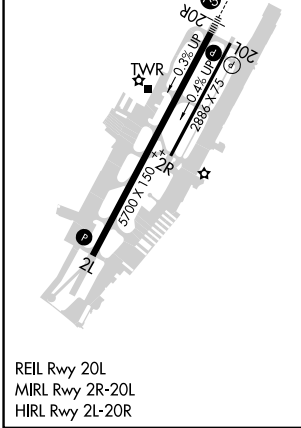
JOHN WAYNE/ORANGE COUNTY (SNA)

Requires specific OPSPEC, MSPEC, or LOA approval. Procedure NA when tower closed.	MALS R 		MISSED APPROACH: Climb to 3000 on I-SNA LOC south course (196°) to MINOE INT/I-SNA 10.9 DME.			
	D-ATIS 126.0	SOCAL APP CON 121.3 263.1	JOHN WAYNE TOWER * 126.8 (CTAF) 343.625	GND CON 120.8	CLNC DEL 118.0	CPDLC UNICOM 122.95



SW-3, 08 AUG 2024 to 05 SEP 2024

SW-3, 08 AUG 2024 to 05 SEP 2024



SA CATEGORY I ILS - SPECIAL AIRCREW & AIRCRAFT CERTIFICATION REQUIRED				
---	--	--	--	--