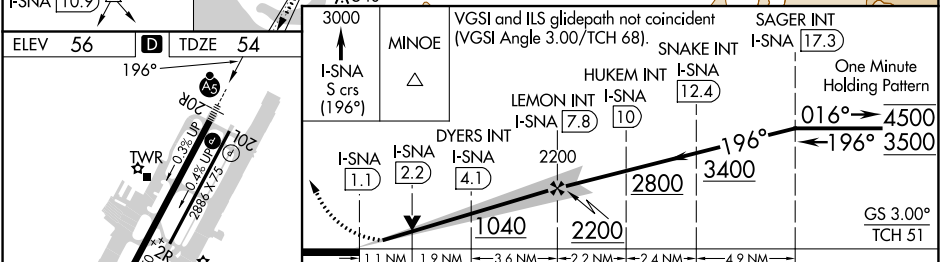
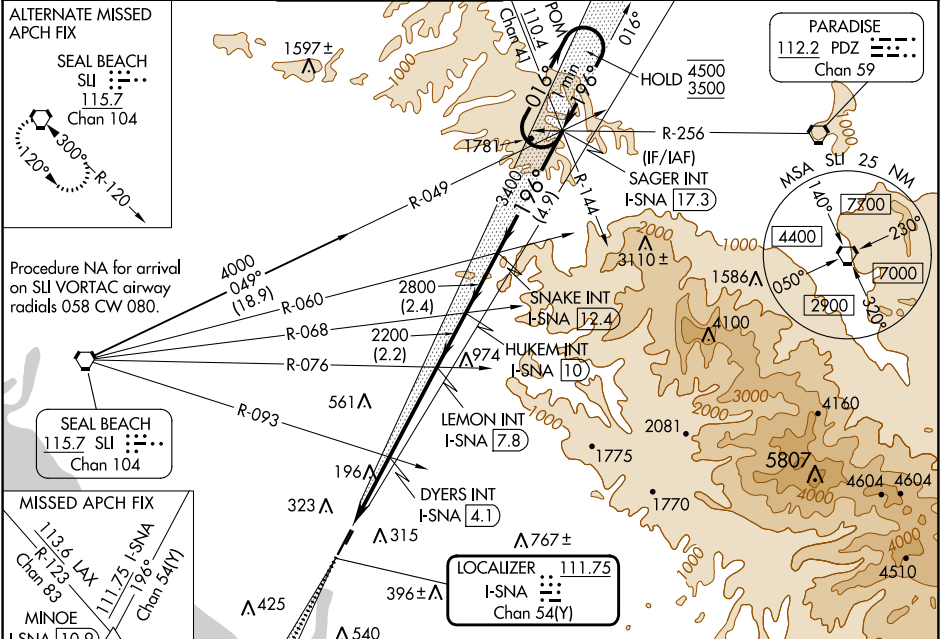


LOC/DME I-SNA 111.75 Chan 54(Y)	APP CRS 196°	Rwy Idg TDZE Apt Elev	5700 54 56
---	------------------------	-----------------------------	---------------------------------------

ILS or LOC RWY 20R

JOHN WAYNE/ORANGE COUNTY (SNA)

⚠ Circling Rwy 20L NA at night. For inop ALS, increase DYERS fix minimums S-LOC 20R Cat C and D visibility to RVR 6000. *RVR 1800 authorized with the use of FD or AP or HUD to DA.	MALSR 	MISSED APPROACH: Climb to 3000 on I-SNA LOC south course (196°) to MINOE INT/I-SNA 10.9 DME.				
D-ATIS 126.0	SOCAL APP CON 121.3 263.1	JOHN WAYNE TOWER ★ 126.8 (CTAF) 343.625	GND CON 120.8	CLNC DEL 118.0	CPDLC	UNICOM 122.95



REIL Rwy 20L MIRL Rwy 2R-20L HIRL Rwy 2L-20R	FAF to MAP 6.6 NM
Knots Min:Sec	60 90 120 150 180 6:36 4:24 3:18 2:38 2:12
CATEGORY	A B C D
S-ILS 20R*	255/24 201 (200-½)
S-LOC 20R	1040/40 986 (1000-¾) 1040/55 986 (1000-1) 1040-2½ 986 (1000-2½)
C CIRCLING	1040-1¼ 984 (1000-1¼) 1040-1½ 984 (1000-½) 1040-3 984 (1000-3) 1160-3 1104 (1200-3)
DYERS FIX MINIMUMS (DUAL VOR RECEIVERS OR DME REQUIRED)	
S-LOC 20R	460/24 406 (500-½) 460/40 406 (500-¾)
C CIRCLING	640-1 584 (600-1) 840-2¼ 784 (800-2¼) 1160-3 1104 (1200-3)

SW-3, 08 AUG 2024 to 05 SEP 2024

SW-3, 08 AUG 2024 to 05 SEP 2024