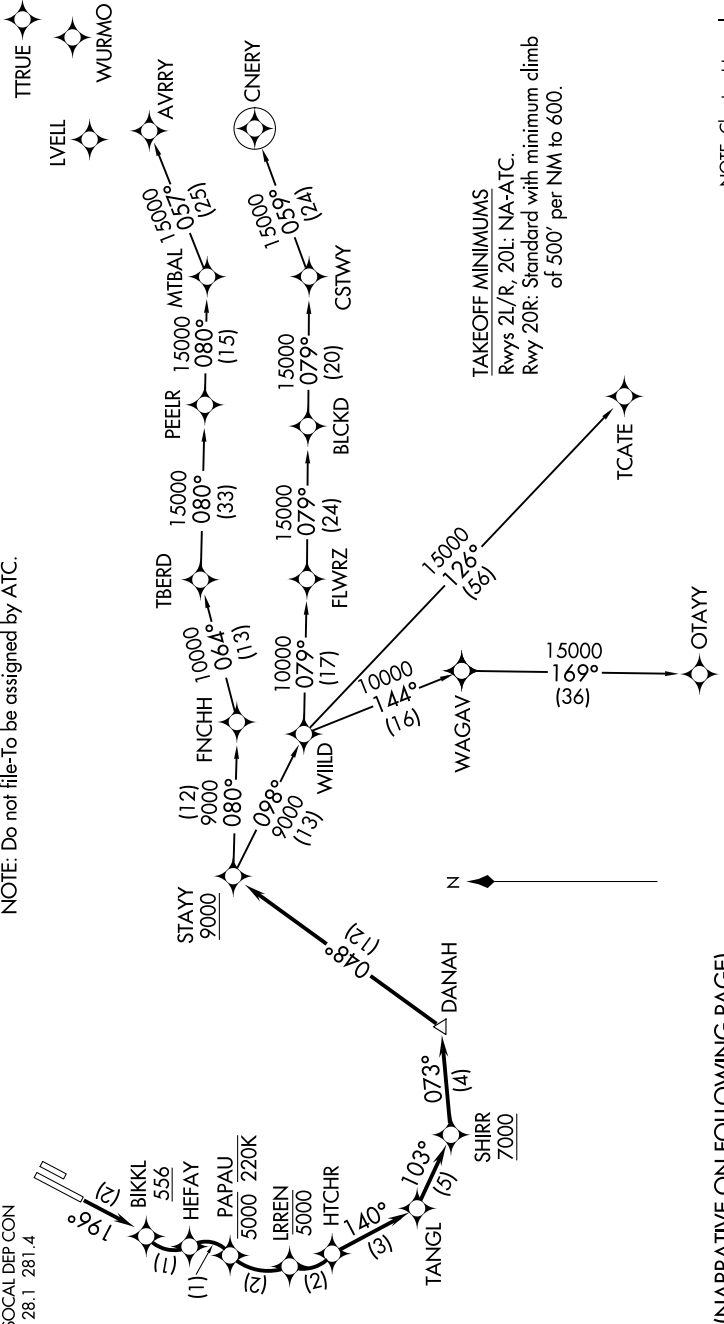


**TOP ALTITUDE:
13000**

NOTE: RNP 1.
 NOTE: RF required.
 NOTE: GPS required.
 NOTE: RADAR required.
 NOTE: Turbojet only.
 NOTE: Parachute jumping all hours, 14000 and below,
 north of route between STAYY and FNCHH.
 NOTE: Do not file-To be assigned by ATC.

D-ATIS
 126.0
 CLNC DEL
 118.0
 CPDC
 GND CON
 120.8
 JOHN WAYNE TOWER *
 126.8 343.625
 SOCIAL DEP CON
 128.1 281.4



TAKEOFF MINIMUMS
 Rwy 2L/R, 20L: NA-ATC.
 Rwy 20R: Standard with minimum climb
 of 500' per NM to 600.

NOTE: Chart not to scale.

(NARRATIVE ON FOLLOWING PAGE)