

LOC/DME I-SBA	APP CRS	Rwy Idg	6052
110.3	075°	TDZE	13
Chan 40		Apt Elev	13

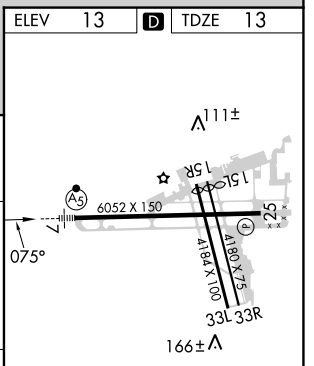
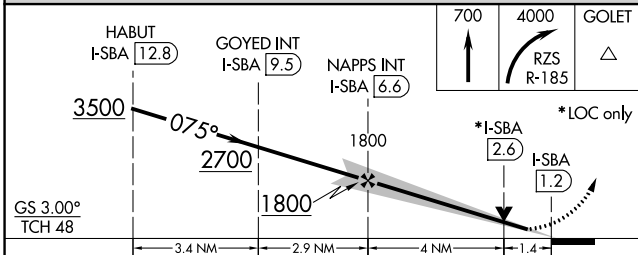
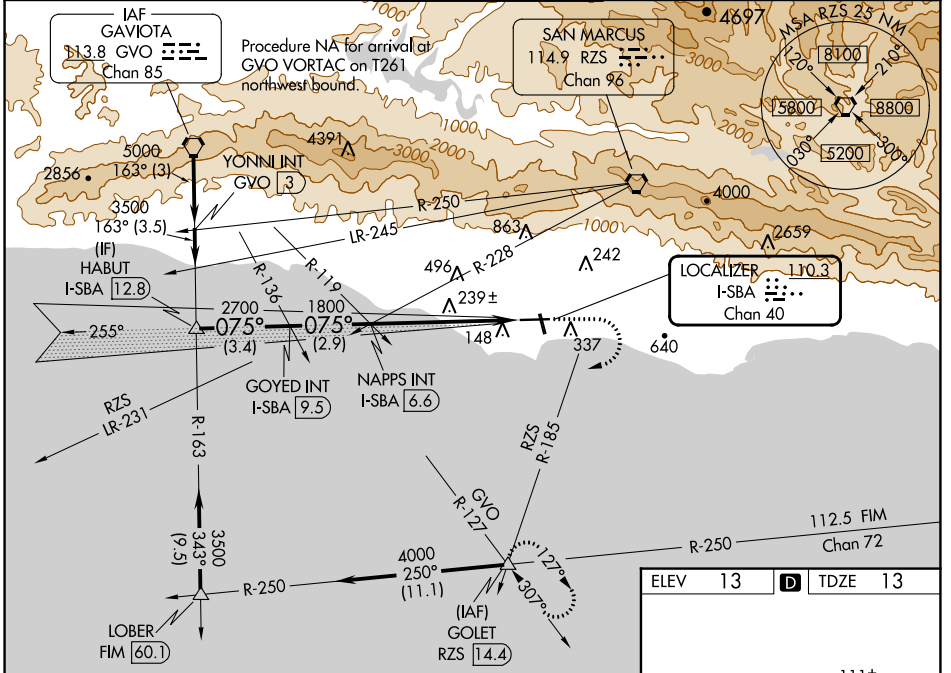
ILS or LOC RWY 7

SANTA BARBARA MUNI (SBA)

⚠ Circling Rwy 15R NA at night. VDP NA when using Oxnard altimeter setting. When local altimeter setting not received, use Oxnard altimeter setting and increase all DA/MDA 100 feet, and S-LOC Cat C visibility to RVR 5000, Cat D visibility to RVR 6000. Increase Circling Cat A visibility ¼ mile, Cat C visibility ½ mile. For inop ALS when using Oxnard altimeter setting, increase S-ILS 7 all Cats visibility to RVR 5000. Circling NA for Cats C and D north of Rwy 7-25.
 # RVR 1800 authorized with use of FD or AP or HUD to DA (NA when using Oxnard altimeter setting).

MISSED APPROACH:
 Climb to 700 then climbing right turn to 4000 on RZS VORTAC R-185 to GOLET INT/RZS 14.4 DME and hold, continue climb-in-hold to 4000.

ATIS 132.65	SANTA BARBARA APP CON* 120.55 319.15 (151°-329°) 125.4 291.1 (330°-150°)	SANTA BARBARA TOWER* 119.7 (CTAF) 254.35	GND CON 121.7	CLNC DEL 132.9	UNICOM 122.95
-----------------------	--	---	-------------------------	--------------------------	-------------------------



CATEGORY	A	B	C	D
S-ILS 7 #	213/24		200 (200-½)	
S-LOC 7	500/24	487 (500-½)	500/40 487 (500-¾)	500/50 487 (500-1)
CIRCLING	800-1 787 (800-1)	800-1¼ 787 (800-1¼)	800-2¼ 787 (800-2¼)	1000-3 987 (1000-3)

HIRL Rwy 7-25	MIRL Rwy 15R-33L	REIL Rwy 15R	REIL Rwy 25		
FAF to MAP 5.4 NM					
Knots	60	90	120	150	180
Min:Sec	5:24	3:36	2:42	2:10	1:48

SW-3, 08 AUG 2024 to 05 SEP 2024

SW-3, 08 AUG 2024 to 05 SEP 2024