

WAAS CH 58122 W22A	APP CRS 220°	Rwy Idg TDZE Apt Elev	7001 378 378
--	------------------------	-----------------------------	---

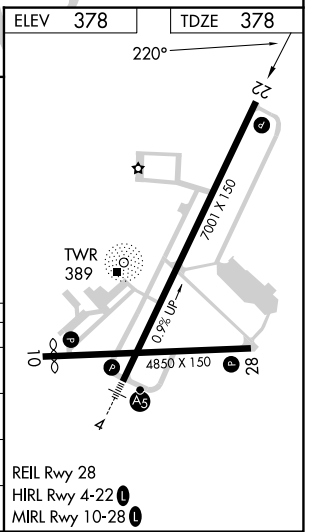
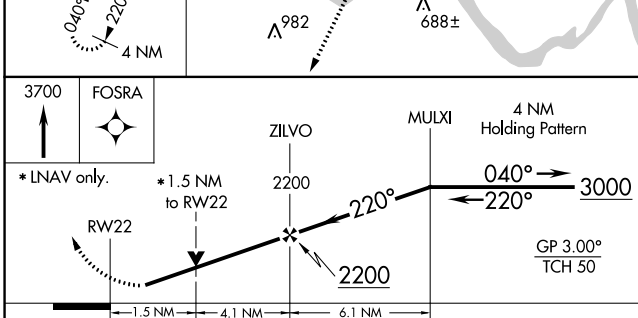
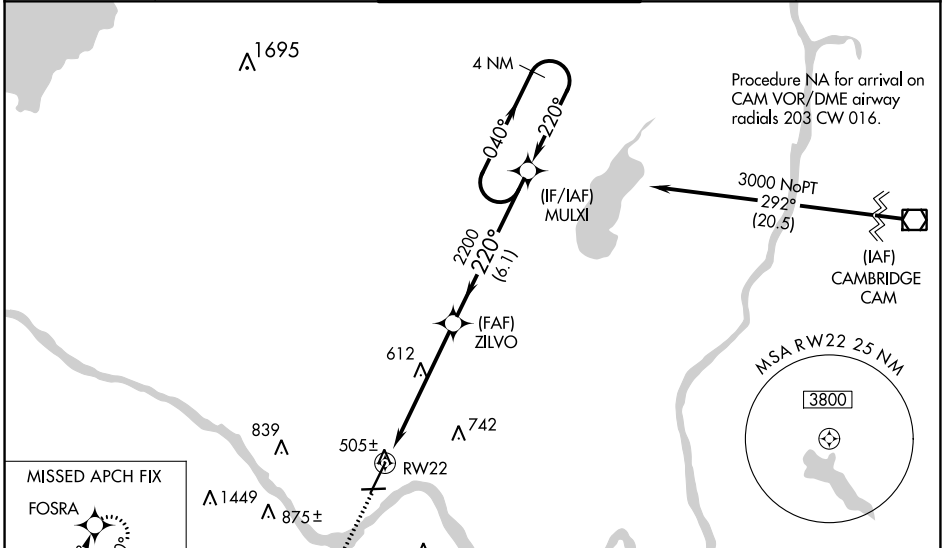
RNAV (GPS) RWY 22

SCHENECTADY COUNTY (SCH)

NA Circling Rwy 10 NA at night. Baro-VNAV NA when using Albany altimeter setting. For uncompensated Baro-VNAV systems, LNAV/VNAV NA below -15°C (5°F) or above 54°C (130°F). DME/DME RNP-0.3 NA. Helicopter visibility reduction below 3/4 SM NA. VDP NA with Albany altimeter setting. When local altimeter setting not received, use Albany altimeter setting and increase LPV DA to 661, LNAV/VNAV DA to 749, and all MDA 40 feet, increase LPV and LNAV/VNAV all Cats, LNAV Cat C and D and Circling Cat C visibility 1/2 mile.

MISSED APPROACH:
Climb to 3700 direct FOSRA and hold.

AWOS-3 119.275	ALBANY APP CON 132.825 263.075	SCHENECTADY TOWER ★ 121.3 (CTAF) 321.1	GND CON 121.9	UNICOM 122.95
--------------------------	--	--	-------------------------	-------------------------



CATEGORY	A	B	C	D
LPV DA		628-3/4	250 (300-3/4)	
LNAV/VNAV DA		716-1 1/8	338 (400-1 1/8)	
LNAV MDA	900-1	522 (600-1)	900-1 1/2	522 (600-1 1/2)
CIRCLING	900-1 522 (600-1)	940-1 562 (600-1)	1120-2 1/4 742 (800-2 1/4)	1320-3 942 (1000-3)

NE-2, 08 AUG 2024 to 05 SEP 2024

NE-2, 08 AUG 2024 to 05 SEP 2024