

VORTAC TXK 116.3 Chan 110	APP CRS 122°	Rwy Idg 4559 TDZE 388 Apt Elev 390
--	------------------------	---

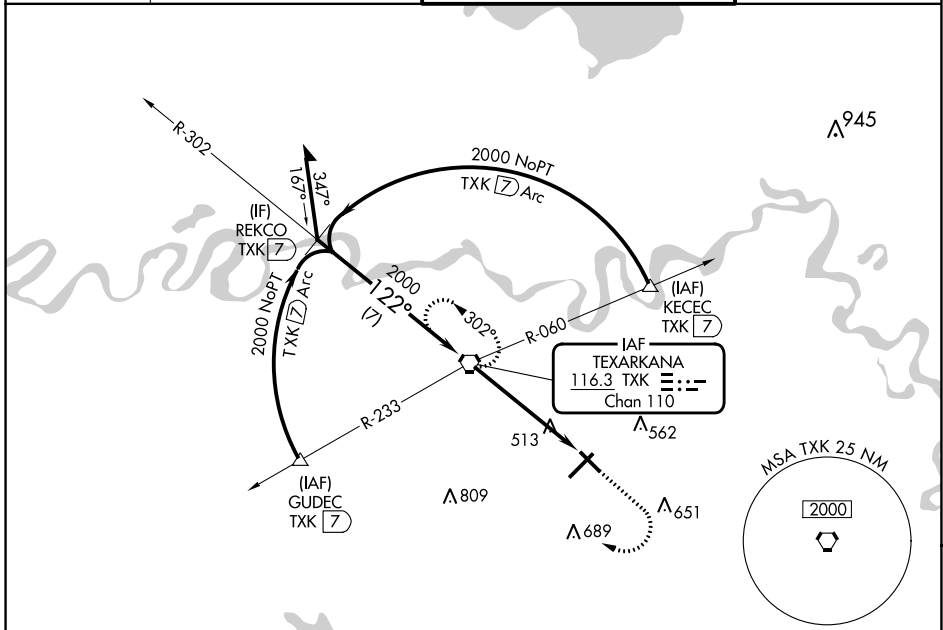
VOR RWY 13

TEXARKANA RGNL-WEBB FLD (TXK)

⚠ When local altimeter setting not received, use De Queen altimeter setting and increase all MDA 100 feet, increase S-13 and Cat C and D visibility 1/4 SM, and Circling Cat C and D visibility 1/4 SM. Visibility reduction by helicopters NA. VDP NA when using De Queen altimeter setting.

MISSED APPROACH: Climb to 1500 then climbing right turn to 2000 direct TXK VORTAC and hold.

ATIS 120.2	FORT WORTH CENTER 123.925 269.475	TEXARKANA TOWER ★ 123.875 (CTAF) 235.625	GND CON 119.225
----------------------	---	--	---------------------------

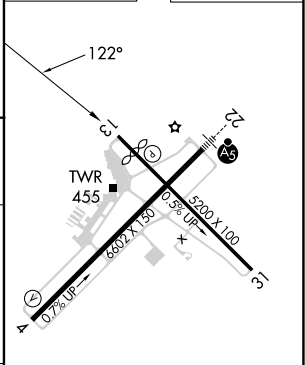
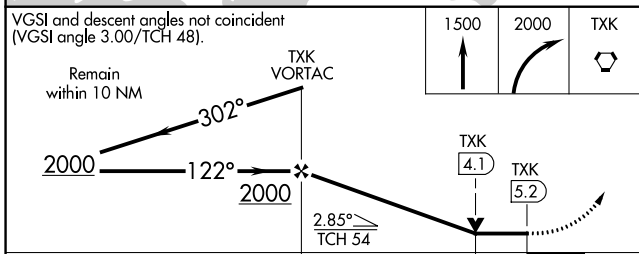


SC-1, 08 AUG 2024 to 05 SEP 2024

SC-1, 08 AUG 2024 to 05 SEP 2024



ELEV 390	TDZE 388
----------	----------



CATEGORY	A	B	C	D
S-13	780-1 430 (500-1)	392 (400-1) 510 (600-1)	780-1 1/8 392 (400-1 1/8) 610 (700-1 3/4)	780-1 1/4 392 (400-1 1/4) 690 (700-2 1/4)
CIRCLING	820-1 430 (500-1)	900-1 510 (600-1)	1000-1 3/4 610 (700-1 3/4)	1080-2 1/4 690 (700-2 1/4)

MIRL Rwy 13-31	
HIRL Rwy 4-22	
FAF to MAP 5.2 NM	
Knots	60 90 120 150 180
Min:Sec	5:12 3:28 2:36 2:05 1:44