

APP CRS 215°	Rwy Idg 5500
	TDZE 5757
	Apt Elev 5762

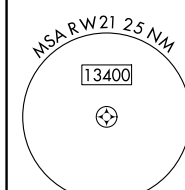
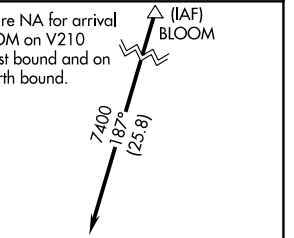
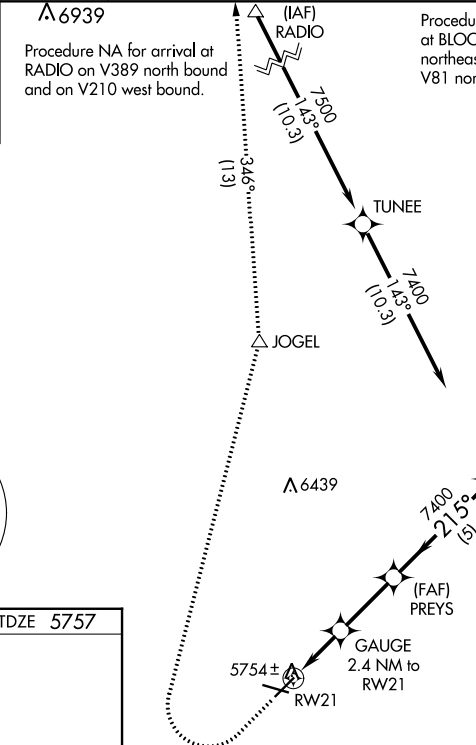
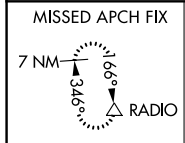
RNAV (GPS) RWY 21

PERRY STOKES (TAD)

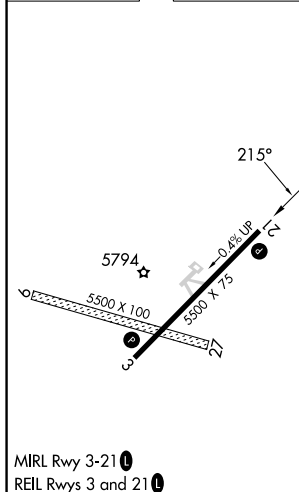
⚠ Circling NA to Rwy 9 and 27. DME/DME RNP-0.3 NA. When local altimeter setting not received, use Pueblo altimeter setting and increase all MDA 300 feet: increase LNAV Cat C/D visibility 5/8 SM, Circling Cat B/D visibility 1/4 SM and Circling Cat C visibility 1 SM. VDP NA when using Pueblo altimeter setting.

⚠ MISSED APPROACH: Climb to 6200 then climbing right turn to 10000 direct JOGEL and on track 346° to RADIO and hold.

ASOS 119.025	DENVER CENTER 128.375 379.95	UNICOM 122.8 (CTAF)
------------------------	--	-------------------------------



ELEV 5762	TDZE 5757
-----------	-----------



6200	10000	JOGEL	RADIO	PREYS	GOERS	
↑	↷	△	tr 346°	△		
		Gauge 2.4 NM to RWY 21		7400		
		≤ 3.00° TCH 40		7400		
		6540		7400		
		0.8 NM		5 NM		
		0.8 NM		1.6 NM		
		2.7 NM		5 NM		
CATEGORY	A		B		C	
LNAV MDA	6020-1		263 (300-1)			
CIRCLING	6180-1		6300-1		6340-1½	
	418 (500-1)		538 (600-1)		578 (600-1½)	
	6580-2¾		818 (900-2¾)			

TRINIDAD, COLORADO
Orig 15SEP16

37°16'N-104°20'W

RNAV (GPS) RWY 21

PERRY STOKES (TAD)

SW-1, 08 AUG 2024 to 05 SEP 2024

SW-1, 08 AUG 2024 to 05 SEP 2024