

VALPARAISO DESTIN FT WALTON BEACH, FLORIDA

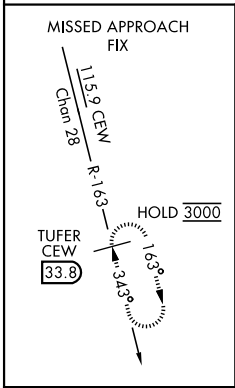
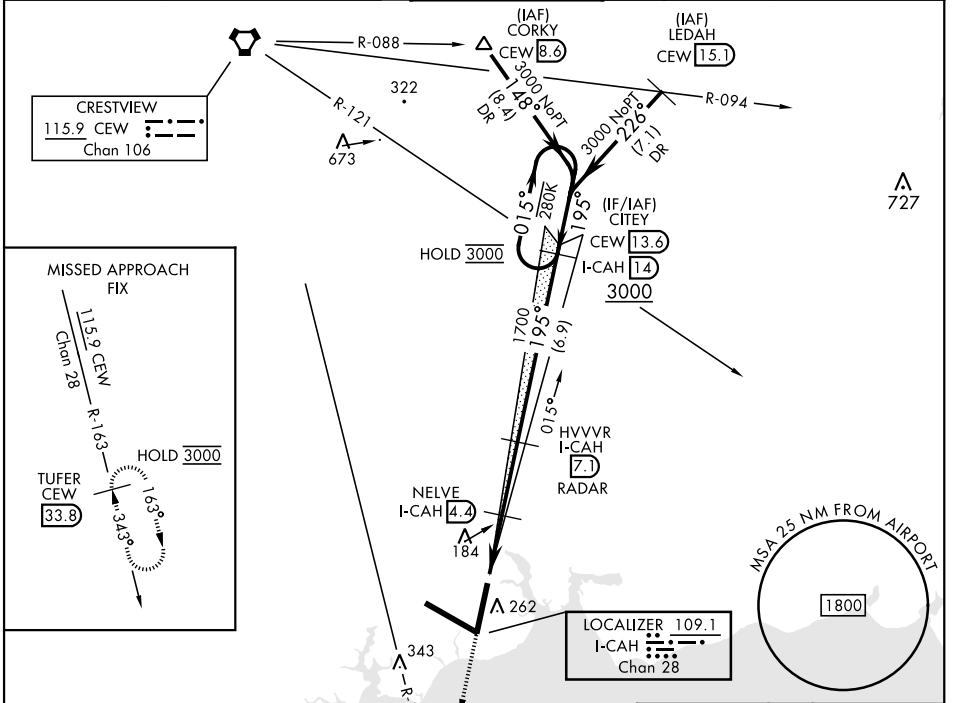
ILS or LOC Z RWY 20

LOC/DME I-CAH 109.1 Chan 28	APCH CRS 195°	Rwy Idg TDZE Arpt Elev 10,012 62 84
---	-------------------------	---

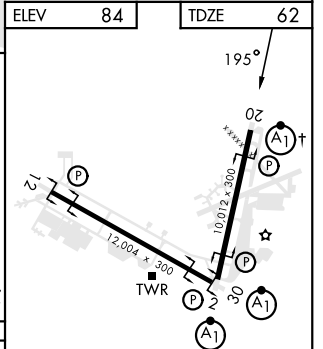
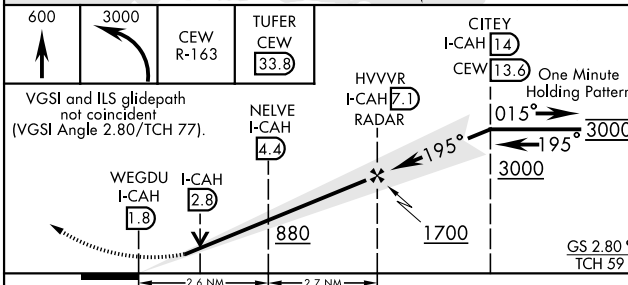
[USAF] EGLIN AFB DESTIN FORT WALTON BEACH (KVPS)

DME required	ALSF-1 	MISSED APPROACH: Climb to 600, then climbing left turn to 3000 on CEW VORTAC R-163 to TUFER/33.8 DME and hold.
--------------	------------	--

ATIS ★ 134.625 273.5	APP CON 125.1 281.45 271°-089° 132.1 360.6 090°-270°	TOWER 118.2 353.65	GND CON 121.8 335.8	CLNC DEL 127.7 377.2
--------------------------------	--	------------------------------	-------------------------------	--------------------------------



EMERG SAFE ALT 100 NM 3500



CATEGORY	A	B	C	D	E
S-ILS 20 *	262/24		200	(200-½)	
S-LOC 20 **	440/24	378 (400-½)	440/35	378	(400-¾)
CIRCLING	600-1	516 (600-1)	680-1½	680-2	700-2¼
			596 (600-½)	596 (600-2)	616 (700-2¼)

† Rwy 20 apch lgt 1500' nonstandard. HIRL all rwys					
FAF to MAP 5.3 NM					
Knots	60	90	120	150	180
Min:Sec	5:18	3:32	2:39	2:07	1:46

VALPARAISO DESTIN FT WALTON BEACH, FLORIDA
Orig 16MAY24

EGLIN AFB DESTIN FORT WALTON BEACH (KVPS)
30°29'N-86°32'W

ILS or LOC Z RWY 20

SE-3, 08 AUG 2024 to 05 SEP 2024

SE-3, 08 AUG 2024 to 05 SEP 2024