

# TACAN RWY 12

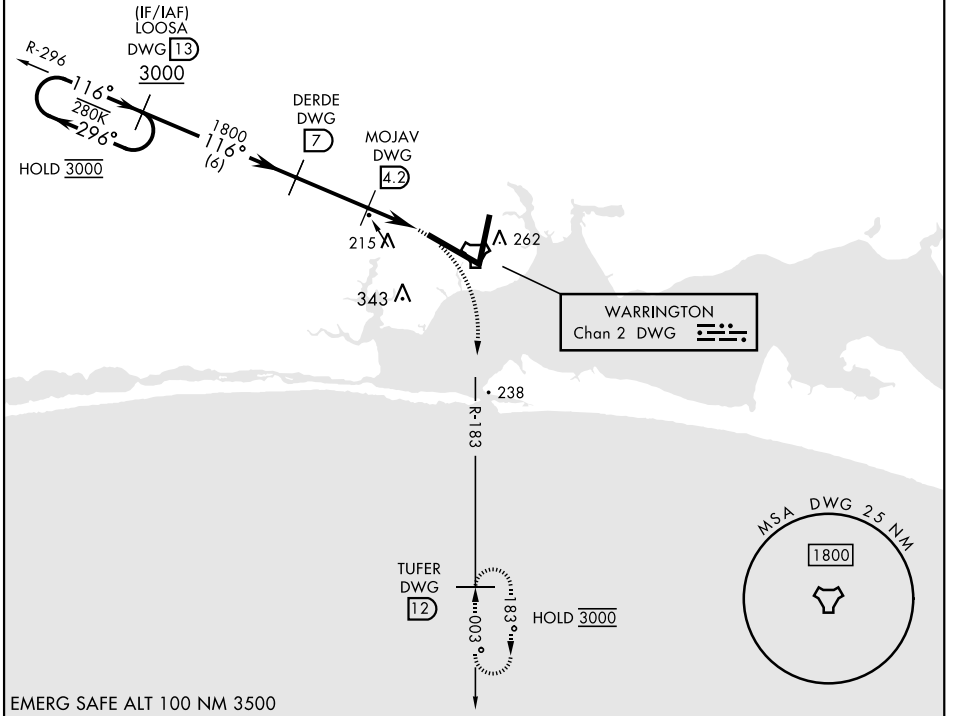
TACAN DWG Chan 2	APCH CRS 116°	Rwy Ldg 12,004	TDZE 84	Arprt Elev 84
---------------------	------------------	-------------------	------------	------------------

[USAF] EGLIN AFB DESTIN FORT WALTON BEACH (KVPS)

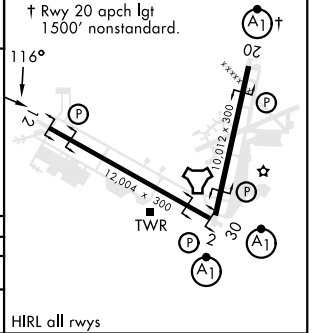
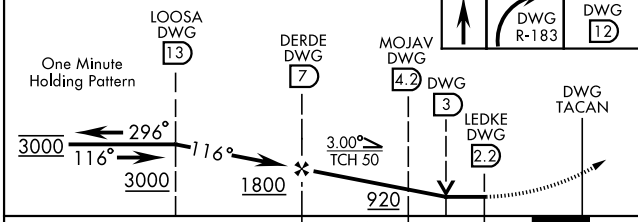
MISSED APPROACH: Climb to 600, then climbing right turn to 3000 and intercept DWG TACAN R-183 to TUFER/12 DME and hold.

ATIS ★ 134.625 273.5	APP CON 125.1 281.45 271°-089° 132.1 360.6 090°-270°	TOWER 118.2 353.65	GND CON 121.8 335.8	CLNC DEL 127.7 377.2
-------------------------	--	-----------------------	------------------------	-------------------------

295



EMERG SAFE ALT 100 NM 3500



CATEGORY	A	B	C	D	E
S-12	520/55	436 (500-1)	520-1½	436 (500-1¼)	
CIRCLING	600-1	516 (600-1)	680-1½ 596 (600-1½)	680-2 596 (600-2)	700-2¼ 616 (700-2¼)

HIRL all rwys

# TACAN RWY 12

SE-3, 08 AUG 2024 to 05 SEP 2024

SE-3, 08 AUG 2024 to 05 SEP 2024