

WAAS CH <b>69411</b> <b>W30A</b>	APP CRS <b>298°</b>	Rwy ldg <b>7276</b> TDZE <b>22</b> Apt Elev <b>24</b>
--	------------------------	---

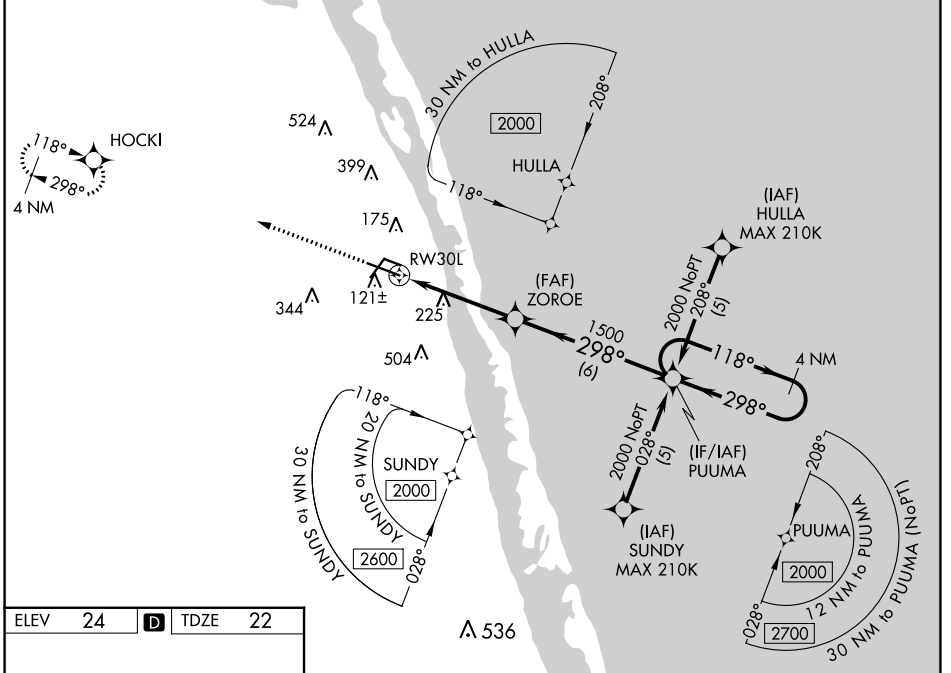
# RNAV (GPS) RWY 30L

VERO BEACH RGNL (VRB)

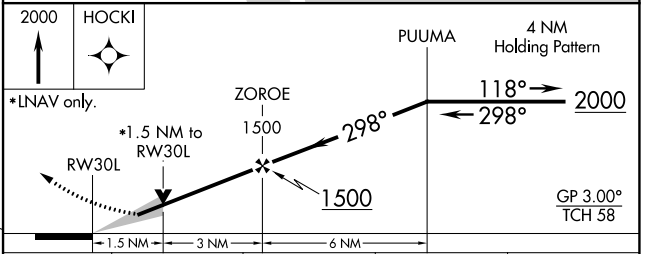
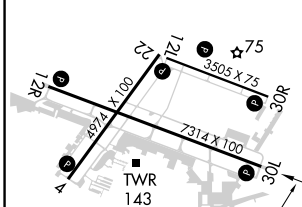
**⚠** Circling to Rwy 30R NA at night. Baro-VNAV NA when using Fort Pierce altimeter setting. For uncompensated Baro-VNAV systems, LNAV/VNAV NA below 0°C (32°F) or above 54°C (130°F). DME/DME RNP-0.3 NA. VDP NA when using Fort Pierce altimeter setting. When local altimeter setting not received, use Fort Pierce altimeter setting and increase all DA 23 feet and all MDA 40 feet and increase LNAV/VNAV all Cats visibility 1/8 mile LNAV Cats C/D and Circling visibility Cats C/D 1/4 mile.

**MISSED APPROACH:**  
Climb to 2000 direct HOCKI and hold.

ATIS <b>120.575</b>	PALM BEACH APP CON <b>123.625 225.4</b>	VERO BEACH TOWER * <b>126.3 (CTAF) 0</b>	GND CON <b>127.45</b>	CLNC DEL <b>134.975</b>	UNICOM <b>122.95</b>
------------------------	--	---	--------------------------	----------------------------	-------------------------



ELEV <b>24</b>	<b>D</b>	TDZE <b>22</b>
----------------	----------	----------------



CATEGORY	A	B	C	D
LPV DA		222-3/4	200 (200-3/4)	
LNAV/VNAV DA		346-1	324 (400-1)	
LNAV MDA	540-1	518 (600-1)	540-1 3/8	518 (600-1 3/8)
CIRCLING	560-1	536 (600-1)	660-1 3/4 636 (700-1 3/4)	820-2 1/2 796 (800-2 1/2)

SE-3, 08 AUG 2024 to 05 SEP 2024

SE-3, 08 AUG 2024 to 05 SEP 2024