

VERO BEACH, FLORIDA

AL-437 (FAA)

23334

VORTAC TRV 117.3 Chan 120	APP CRS 298°	Rwy ldg 7276 TDZE 22 Apt Elev 24
--	------------------------	---

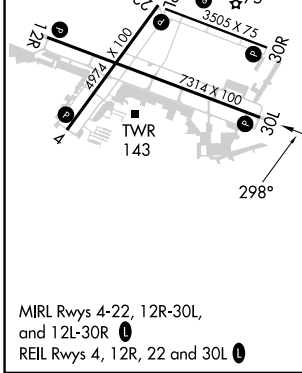
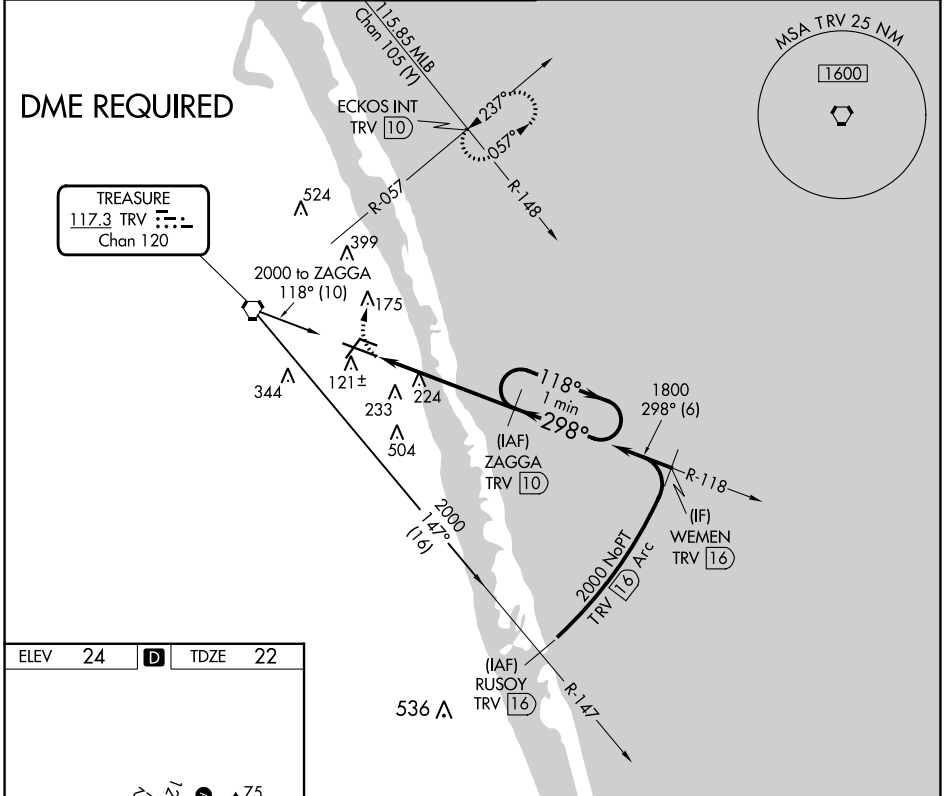
VOR RWY 30L

VERO BEACH RGNL (VRB)

⚠ Circling to Rwy 30R NA at night. When local altimeter setting not received, use Fort Pierce altimeter setting and increase all MDAs 40 feet and Circling Cat C/D visibility ½ SM. VDP NA with Fort Pierce altimeter setting. DME required.

MISSED APPROACH: Climbing right turn to 2000 on heading 360° and TRV VORTAC R-057 to ECKOS INT/TRV 10 DME and hold.

ATIS 120.575	PALM BEACH APP CON 123.625 225.4 (N)	VERO BEACH TOWER ★ 126.3 (CTAF) 0	GND CON 127.45	CLNC DEL 134.975	UNICOM 122.95
------------------------	--	---	--------------------------	----------------------------	-------------------------



2000 hdg 360°	TRV R-057	ECKOS INT	ZAGGA TRV 10	One Minute Holding Pattern
TRV 4.7	TRV 6	TRV 10	1800	118° → ← 298°
1.3 NM	4 NM	≤ 3.05° TCH 58		
CATEGORY	A	B	C	D
S-30L	500-1	478 (500-1)	500-1¾ 478 (500-1¾)	
CIRCLING	560-1	536 (600-1)	660-1¾ 636 (700-1¾)	820-2½ 796 (800-2½)

VERO BEACH, FLORIDA
Amdt 4D 30DEC21

27°39'N-80°25'W

VERO BEACH RGNL (VRB) VOR RWY 30L

SE-3, 08 AUG 2024 to 05 SEP 2024

SE-3, 08 AUG 2024 to 05 SEP 2024