

WAAS CH <b>53515</b> <b>W27A</b>	APP CRS <b>268°</b>	Rwy ldg <b>7000</b> TDZE <b>72</b> Apt Elev <b>80</b>
--	------------------------	---

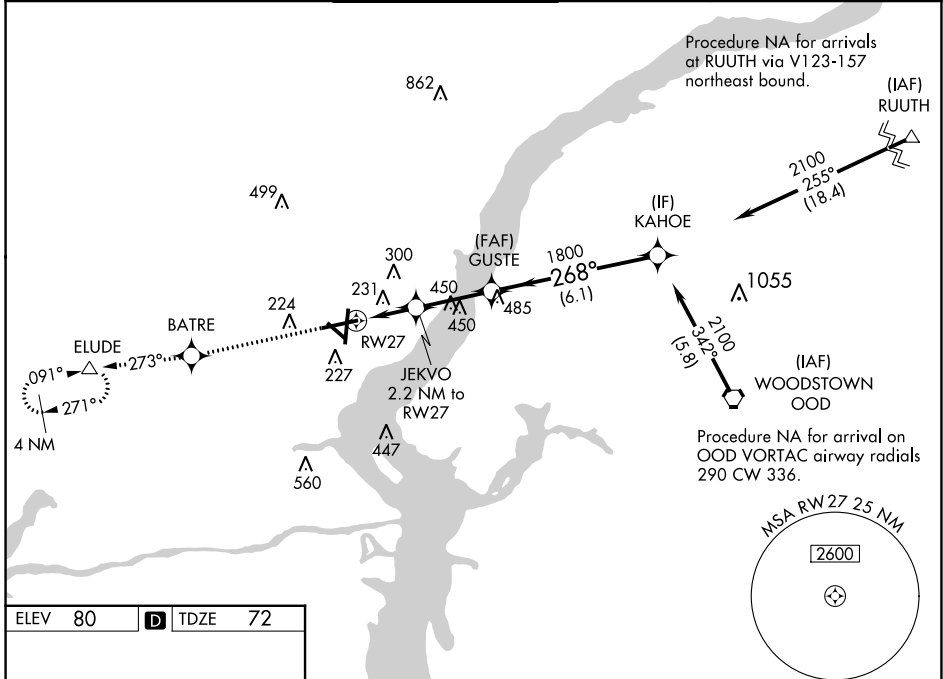
# RNAV (GPS) RWY 27

NEW CASTLE (ILG)

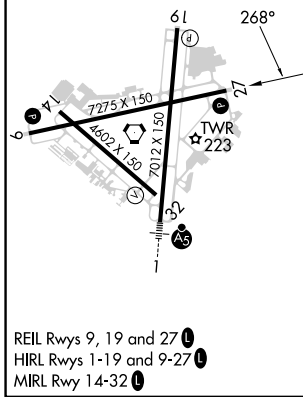
**⚠** Baro-VNAV NA when using Philadelphia Intl altimeter setting. For uncompensated Baro-VNAV systems, LNAV/VNAV DA NA below -15°C (5°F) or above 39°C (102°F). DME/DME RNP-0.3 NA. Helicopter visibility reduction below ¼ SM NA. When local altimeter setting not received, use Philadelphia Intl altimeter setting: increase LPV DA to 480, LNAV/VNAV DA to 584, and all MDA's 60 feet; increase LPV all Cats and LNAV Cat C/D visibility ½ SM and LNAV/VNAV all Cats and Circling Cat D visibility ¼ SM.

**⚠** MISSED APPROACH: Climb to 2000 direct BATRE and via track 273° to ELUDE and hold.

ATIS <b>123.95</b>	PHILADELPHIA APP CON <b>118.35 323.1</b>	WILMINGTON TOWER* <b>126.0</b> (CTAF) <b>352.05</b>	GND CON <b>121.7 275.8</b>	CLNC DEL <b>119.95</b>	UNICOM <b>122.95</b>
-----------------------	---	--	-------------------------------	---------------------------	-------------------------



ELEV 80	<b>D</b>	TDZE 72
---------	----------	---------



2000	BATRE	tr 273°	ELUDE	VGSI and RNAV glidepath not coincident (VGSI Angle 3.00/TCH 54).	Procedure Turn NA
* LNAV only.					
	JEKVO 2.2 NM to RW27	GUSTE	KAHOE	2100	GP 3.10° TCH 68
	RW27	860*	1800	268°	
	2.2 NM	2.8 NM	6.1 NM		

CATEGORY	A	B	C	D
LPV DA		426-1½	354 (400-1½)	
LNAV/VNAV DA		530-1½	458 (500-1½)	
LNAV MDA	500-1	428 (500-1)	500-1¼	428 (500-1¼)
CIRCLING	540-1 460 (500-1)	560-1 480 (500-1)	600-1½ 520 (600-1½)	800-2¼ 720 (800-2¼)

NE-3, 08 AUG 2024 to 05 SEP 2024

NE-3, 08 AUG 2024 to 05 SEP 2024