

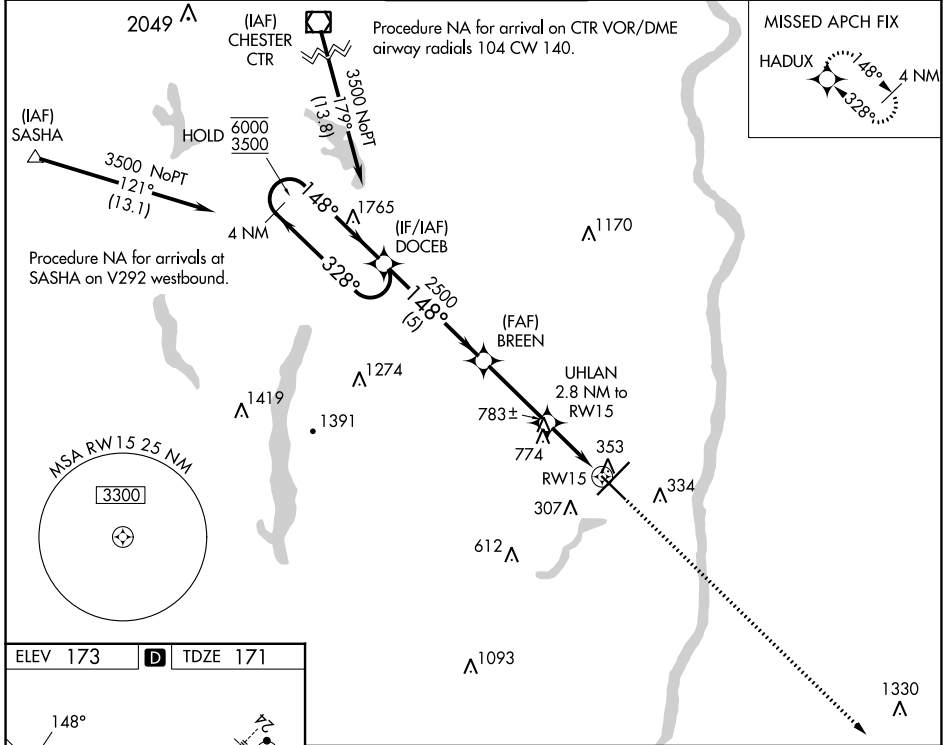
WAAS CH 60928 W15A	APP CRS 148°	Rwy Idg TDZE Apt Elev	6847 171 173
--	------------------------	-----------------------------	---

RNAV (GPS) RWY 15

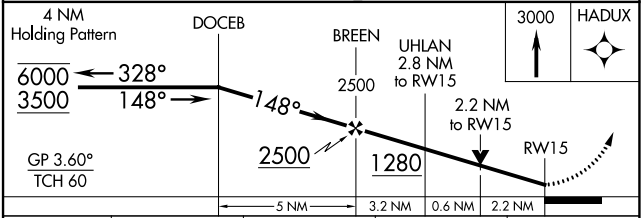
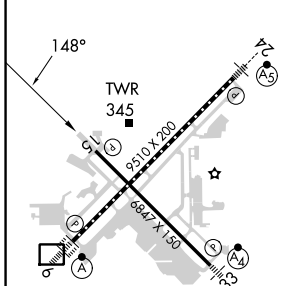
BRADLEY INTL (BDL)

RNP APCH-GPS.		MISSED APPROACH: Climb to 3000 direct HADUX and hold, continue climb-in-hold to 3000.	
<p>▼ Rwy 15 helicopter visibility reduction below $\frac{3}{4}$ SM NA. For uncompensated Baro-VNAV systems, LNAV/VNAV NA below -17°C or above 54°C.</p>			

D-ATIS 118.15	BRADLEY APP CON 123.95 290.55 (061°-240°) 125.35 281.5 (241°-060°)	BRADLEY TOWER 120.3 351.8	GND CON 121.9 348.6	CLNC DEL 121.75 322.3	CPDLC
-------------------------	--	-------------------------------------	-------------------------------	---------------------------------	-------



ELEV 173	D	TDZE 171
----------	----------	----------



CATEGORY	A	B	C	D
LPV DA	478- $\frac{7}{8}$ 307 (400- $\frac{7}{8}$)			NA
LNAV/VNAV DA	1040-2 $\frac{1}{2}$ 869 (900-2 $\frac{1}{2}$)			NA
LNAV MDA	1040-1 869 (900-1)	1040-1 $\frac{1}{4}$ 869 (900-1 $\frac{1}{4}$)	1040-2 $\frac{1}{2}$ 869 (900-2 $\frac{1}{2}$)	NA
C CIRCLING	1040-1 $\frac{1}{4}$	867 (900-1 $\frac{1}{4}$)	1100-2 $\frac{3}{4}$ 927 (1000-2 $\frac{3}{4}$)	NA

TDZ/CL Rwy 6 and 24
HIRL Rwy 6-24 and 15-33
REIL Rwy 6 and 15

NE-1, 08 AUG 2024 to 05 SEP 2024

NE-1, 08 AUG 2024 to 05 SEP 2024