

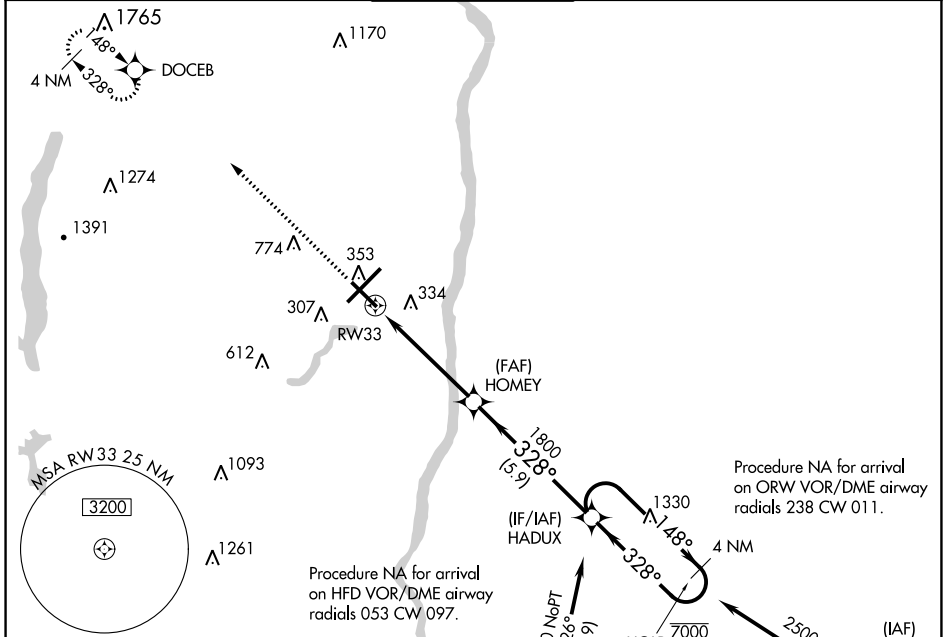
WAAS CH <b>65628</b> <b>W33A</b>	APP CRS <b>328°</b>	Rwy Idg TDZE Apt Elev	<b>6847</b> <b>171</b> <b>173</b>
--	------------------------	-----------------------------	---

# RNAV (GPS) RWY 33

BRADLEY INTL (BDL)

RNP APCH - GPS.		MALSF	MISSED APPROACH: Climb to 3500 direct DOCEB and hold, continue climb-in-hold to 3500.
<p><b>▼</b> Inop table does not apply to LPV. For uncompensated Baro-VNAV systems, LNAV/VNAV NA below -17°C or above 54°C.</p>			

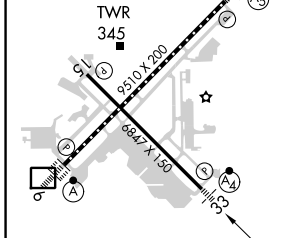
D-ATIS <b>118.15</b>	BRADLEY APP CON <b>123.95 290.55</b> (061°-240°) <b>125.35 281.5</b> (241°-060°)	BRADLEY TOWER <b>120.3 351.8</b>	GND CON <b>121.9 348.6</b>	CLNC DEL <b>121.75 322.3</b>	CPDLC
-------------------------	--	-------------------------------------	-------------------------------	---------------------------------	-------



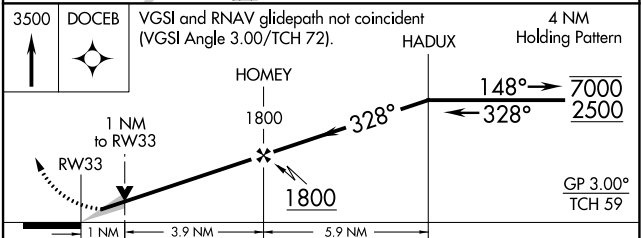
NE-1, 08 AUG 2024 to 05 SEP 2024

NE-1, 08 AUG 2024 to 05 SEP 2024

ELEV 173	<b>D</b>	TDZE 171
----------	----------	----------



<p>HIRL Rws 6-24 and 15-33 REIL Rws 6 and 15 TDZ/CL Rws 6 and 24</p>
--



CATEGORY	A	B	C	D
LPV DA		371/40	200 (200-¾)	
LNAV/VNAV DA		463/40	292 (300-¾)	
LNAV MDA	560/40	389 (400-¾)	560/45	389 (400-7/8)
<b>C</b> CIRCLING	700-1	527 (600-1)	1120-2¾ 947 (1000-2¾)	1220-3 1047 (1100-3)