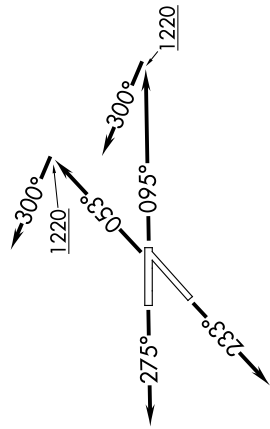


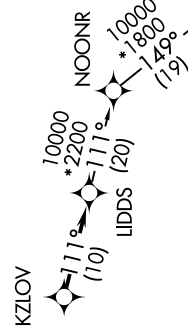
**TOP ALTITUDE:  
ASSIGNED BY ATC**

RNAV 1 - DME/DME/IRU or GPS.  
RADAR required.

**TAKEOFF MINIMUMS:**  
Rwy 23: Standard.  
Rwys 5, 9: Standard with minimum climb of 500' per NM to 1220.  
Rwys 27: Standard with minimum climb of 209' per NM to 1000.



NOTE: Turbojet departures at/above 10000, maintain 280K until advised by ATC.

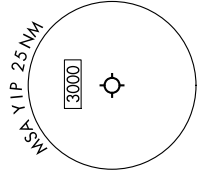


**DEPARTURE ROUTE DESCRIPTION**

**TAKEOFF RUNWAY 5:** Climb on heading 053° to 1220, then on heading 300° or as assigned by ATC, for RADAR vectors to KZLOV, thence....  
**TAKEOFF RUNWAY 9:** Climb on heading 095° to 1220, then on heading 300° or as assigned by ATC, for RADAR vectors to KZLOV, thence....  
**TAKEOFF RUNWAY 23:** Climb on heading 233° or as assigned by ATC, for RADAR vectors to KZLOV, thence....  
**TAKEOFF RUNWAY 27:** Climb on heading 275° or as assigned by ATC, for RADAR vectors to KZLOV, thence....  
 ....on track 111° to LIDDS, then on (transition). Maintain ATC assigned altitude, expect filed altitude 10 minutes after departure.

**GRIVY TRANSITION (LIDDS3.GRIVY):**

ATIS 127.425  
GND CON 119.975  
WILLOW RUN TOWER 125.275 256.9  
DETROIT DEP CON 118.95 284.0



NOTE: Chart not to scale.