

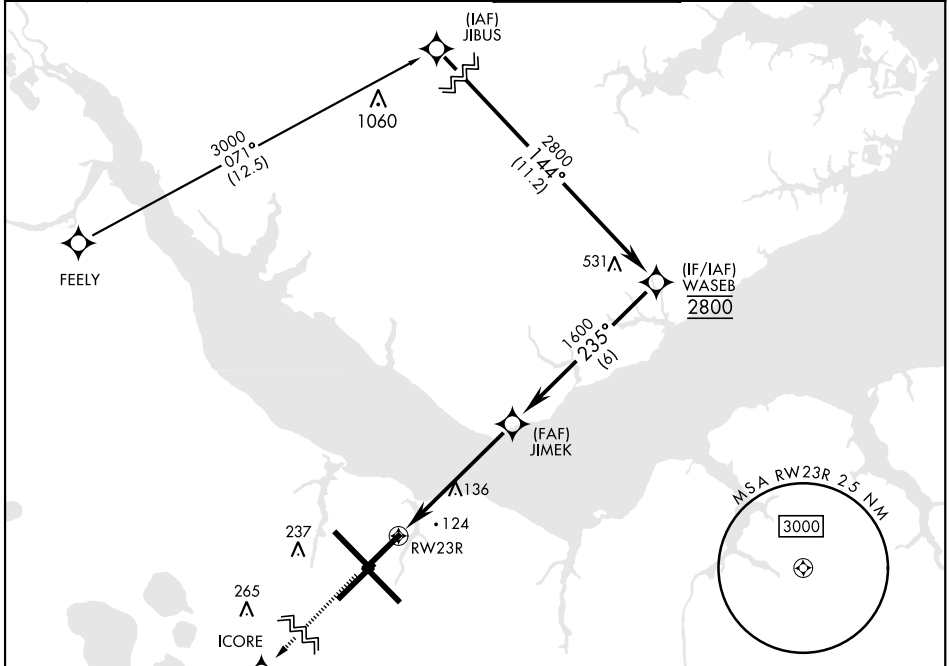
RNAV (GPS) RWY 23R

WAAS Chan 51523 W23A	APCH CRS 235°	Rwy ldg 7552 TDZE 23 Arprt Elev 29
--	-------------------------	---

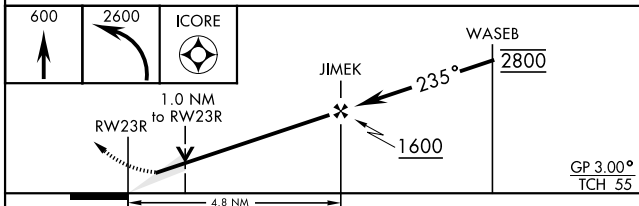
[USN] CHERRY POINT MCAS (CUNNINGHAM FLD) (KNKT)

RNP APCH ▼ * When ALS inop, increase vis to ¾ mile. ** When ALS inop, increase vis to 1 mile.	MALSR 	Missed Approach: Climb to 600 then climbing left turn to 2600 direct ICORE and hold. Continue climb in hold to 2600.
---	-----------	---

ATIS 127.475 244.875	(E) 119.75 (E) 132.575 (W) 119.35	APP CON 360.775 (abv 2600') 299.6 (at/blw 2600') 377.175 (N) 124.1 268.7	TOWER 121.3 340.2	GND CON 128.625 239.025	CLNC DEL 125.95 316.125	ASR/ PAR
--	--	--	------------------------------------	---	---	-------------



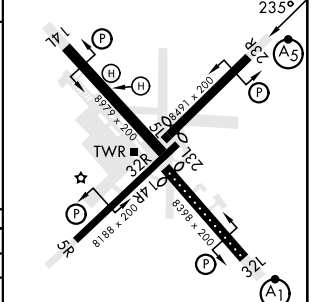
600	2600	ICORE



EMERG SAFE ALT 100 NM 4100

ELEV 29		TDZE 23
---------	--	---------

Rwy 32R, 23L, 14R, 5L marked in center mat area.



CATEGORY	A	B	C	D
LPV*		223-½	200 (200-½)	
LNAV/VNAV DA**		400-⅝	377 (400-⅝)	
LNAV MDA**	400-½	377 (400-½)	400-⅝	377 (400-⅝)
GP CIRCLING	580-1	551 (600-1)	580-1 ½	580-2
			551 (600-1½)	551 (600-2)

HIRL all rwys
REIL Rwy 5L and 14R
Rwy 5L-23R ldg 7552'
Rwy 14R-32L ldg 7551'

RNAV (GPS) RWY 23R

SE-2, 08 AUG 2024 to 05 SEP 2024

SE-2, 08 AUG 2024 to 05 SEP 2024