

CERRY POINT, NORTH CAROLINA

TACAN Z RWY 32L

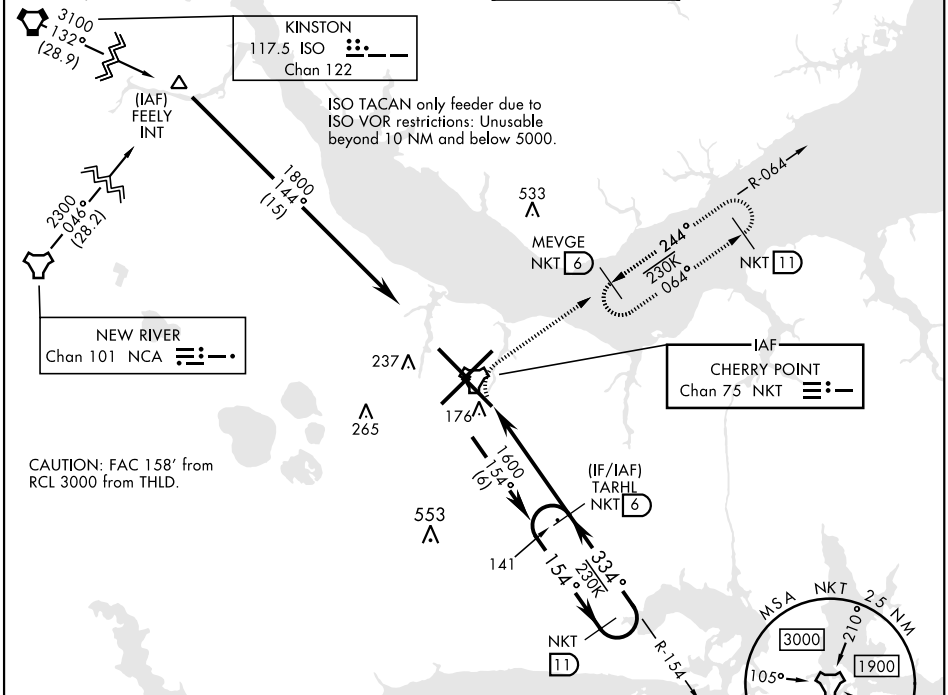
TACAN NKT Chan 75	APCH CRS 334°	Rwy ldg 7551 TDZE 26 Arpt Elev 29
----------------------	------------------	--

[USN]

CERRY POINT MCAS (CUNNINGHAM FLD) (KNKT)

▼ * When ALS inop, increase vis CAT AB to 1 mile, CAT CD to 1½ miles.
 ALS-F-1
(A1)
MISSED APPROACH: Climbing right turn to 1600 and intercept NKT R-064 to MEVGE and hold.

ATIS 127.475 244.875	(E) 119.75 (E) 132.575 (W) 119.35	APP CON 360.775 (abv 2600') 299.6 (at/blw 2600') 377.175 (N) 124.1 268.7	TOWER 121.3 340.2	GND CON 128.625 239.025	CLNC DEL 125.95 316.125	ASR/ PAR
----------------------------	---	---	----------------------	-------------------------------	-------------------------------	-------------



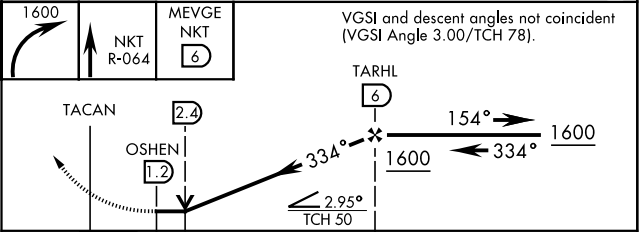
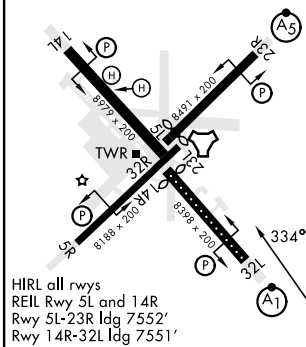
SE-2, 08 AUG 2024 TO 05 SEP 2024

SE-2, 08 AUG 2024 TO 05 SEP 2024

EMERG SAFE ALT 100 NM 4100

ELEV 29	D	TDZE 26
---------	----------	---------

Rwy 32R, 23L, 14R, 5L marked in center mat area.



VGSI and descent angles not coincident (VGSI Angle 3.00/TCH 78).

CATEGORY	A	B	C	D
S-32L *	460-½	435 (500-½)	460-¾ 435 (500-¾)	
C CIRCLING	580-1	551 (600-1)	580-1½ 551 (600-1½)	580-2 551 (600-2)

CERRY POINT, NORTH CAROLINA

34° 54' N-76° 53' W

CERRY POINT MCAS (CUNNINGHAM FLD) (KNKT)

Amdt 6 02NOV23

TACAN Z RWY 32L