

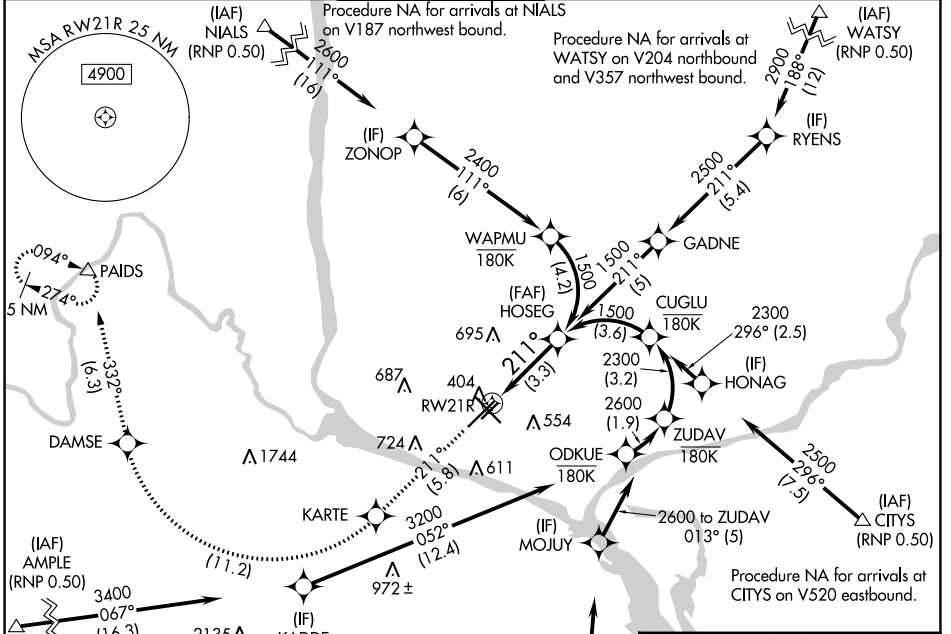
APP CRS	Rwy Idg	<b>7110</b>
<b>211°</b>	TDZE	<b>404</b>
	Apt Elev	<b>410</b>

# RNAV (RNP) Z RWY 21R

TRI-CITIES (PSC)

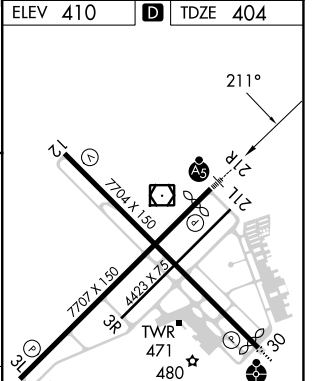
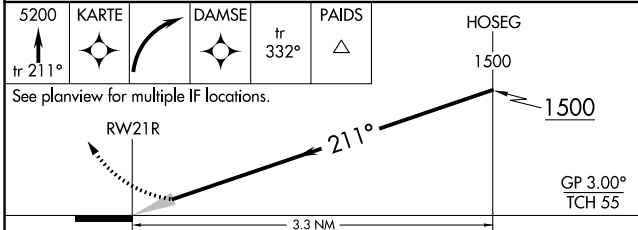
<p><b>▽</b> For uncompensated Baro-VNAV systems, procedure NA below -14°C (7°F) or above 54°C (130°F). GPS required. RF required. For inoperative MALS, increase RNP 0.11 all Cats visibility to RVR 5700 and RNP 0.30 all Cats visibility to 1 3/8 mile.</p>	MALS	<p>MISSED APPROACH: Climb to 5200 on track 211° to KARTE, right turn to DAMSE, and on track 332° to PAIDS and hold.</p>

ATIS <b>125.65</b>	SPOKANE APP CON * <b>128.75 377.2</b>	TRI-CITIES TOWER* <b>135.3 (CTAF) 0 323.3</b>	GND CON <b>121.8</b>	CLNC DEL <b>120.0</b>	UNICOM <b>122.95</b>
-----------------------	--	--	-------------------------	--------------------------	-------------------------



ELEV 410	<b>D</b> TDZE 404
----------	-------------------

5200	KARTE	DAMSE	tr 332°	PAIDS	HOSEG
tr 211°					1500



CATEGORY	A	B	C	D
RNP 0.11 DA		754/33	350 (400-3/4)	
RNP 0.30 DA		832/48	428 (500-1)	

**AUTHORIZATION REQUIRED**

REIL Rwy 3L and 12  
MIRL Rwy 12-30   
HIRL Rwy 3L-21R

NW-1, 08 AUG 2024 to 05 SEP 2024

NW-1, 08 AUG 2024 to 05 SEP 2024