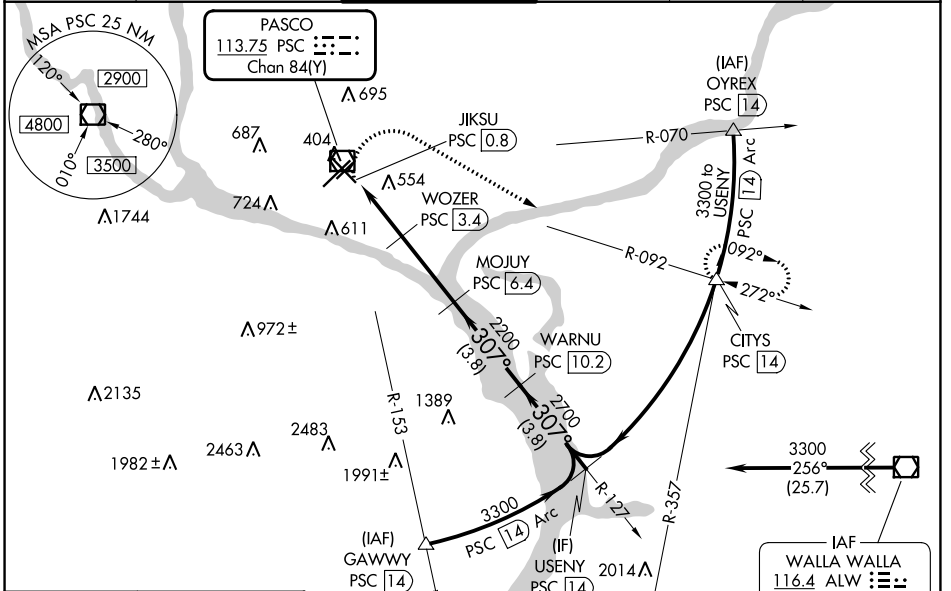


VOR/DME PSC <b>113.75</b> Chan <b>84(Y)</b>	APP CRS <b>307°</b>	Rwy Idg <b>7504</b> TDZE <b>405</b> Apt Elev <b>410</b>
---	------------------------	---

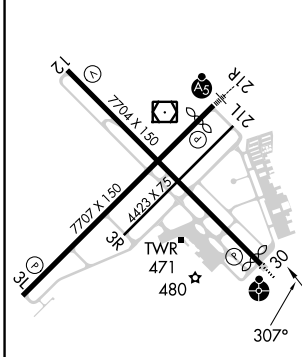
# VOR RWY 30

TRI-CITIES(PSC)

DME required.			MISSED APPROACH: Climbing right turn to 3200 on heading 105° and PSC R-092 to CITIES/PSC 1.4 DME and hold.				
Rwy 30 helicopter visibility reduction below 3/4 SM NA. VDP NA when using Herminston altimeter setting. When local altimeter setting not received, use Herminston altimeter setting and increase all MDAs 100 feet, increase S-30 visibility Cat C/D 3/8 SM and Circling Cat C/D visibility 1/4 SM. For inop ALS, increase S-30 Cat C/D visibility to 1 1/8 SM.			ATIS <b>125.65</b>	SPOKANE APP CON * <b>128.75 377.2</b>	TRI-CITIES TOWER * <b>135.3 (CTAF) 323.3</b>	GND CON <b>121.8</b>	CLNC DEL <b>120.0</b>



ELEV 410	<b>D</b>	TDZE 405
----------	----------	----------



REIL Rwy 3L and 12  
MIRL Rwy 12-30  
HIRL Rwy 3L-21R

	3200 PSC R-092	CITIES PSC 1.4	WOZER PSC 3.4	MOJUJ PSC 6.4	WARNU PSC 10.2	USENY PSC 14
	1260		2200		3300	
	1.1 NM	1.5	3 NM	3.8 NM	3.8 NM	
CATEGORY	A		B		C	
S-30	820-3/4		415 (500-3/4)		820-1 415 (500-1)	
<b>C</b> CIRCLING	880-1 470 (500-1)		940-1 530 (600-1)		1040-1 3/4 630 (700-1 3/4) 1100-2 1/4 690 (700-2 1/4)	

NW-1, 08 AUG 2024 to 05 SEP 2024

NW-1, 08 AUG 2024 to 05 SEP 2024