

APP CRS	Rwy Idg	<b>5001</b>
<b>136°</b>	TDZE	<b>31</b>
	Apt Elev	<b>39</b>

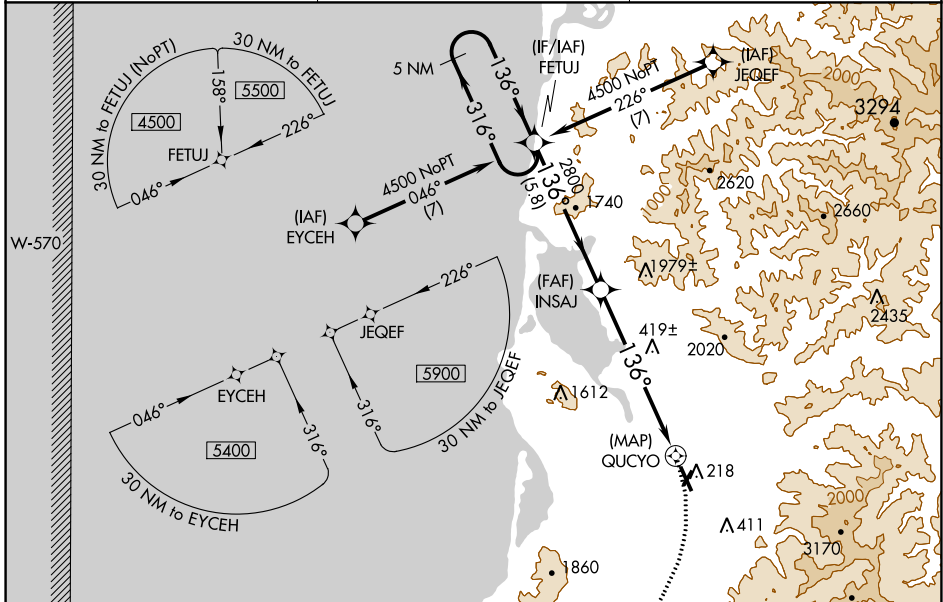
# RNAV (GPS) RWY 13

TILLAMOOK (TMK)

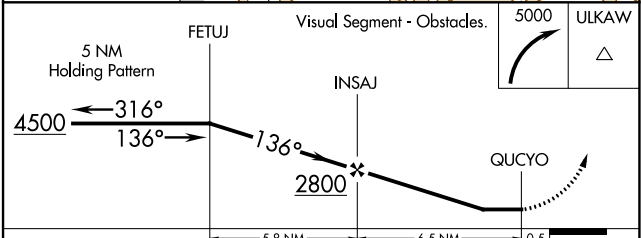
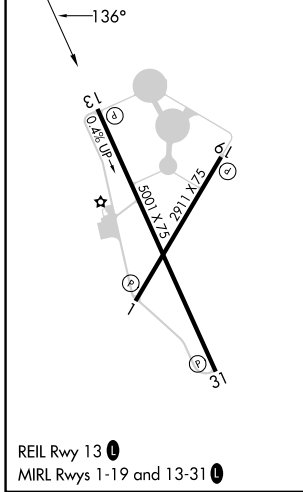
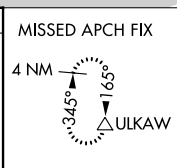
**NA** DME/DME RNP-0.3 NA. When local altimeter setting not received, use Astoria Rgnl altimeter setting and increase all MDA 540 feet; increase LNAV Cat A visibility 1/4 SM, Cat B visibility 1/2 SM, and Cat C visibility 1 SM and Circling Cat B visibility 1/4 SM. Night Landing: Rwy 1, 19 NA. Helicopter visibility reduction below 3/4 SM NA.

**MISSED APPROACH:** Climbing right turn to 5000 direct ULKAW and hold, continue climb-in-hold to 5000.

AWOS-3PT <b>120.0</b>	SEATTLE CENTER <b>124.2 317.6</b>	UNICOM <b>122.8 (CTAF) 0</b>
--------------------------	--------------------------------------	---------------------------------



ELEV 39	TDZE 31
---------	---------



CATEGORY	A	B	C	D
LNAV MDA	760-1	729 (800-1)	760-2 729 (800-2)	NA
CIRCLING	880-1 1/4 841 (900-1 1/4)	920-1 1/4 881 (900-1 1/4)	1580-3 1541 (1600-3)	NA

NW-1, 08 AUG 2024 to 05 SEP 2024

NW-1, 08 AUG 2024 to 05 SEP 2024