

VOR ALI 114.5	APP CRS 325°	Rwy Idg 5997
		TDZE 174
		Apt Elev 178

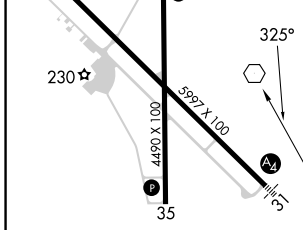
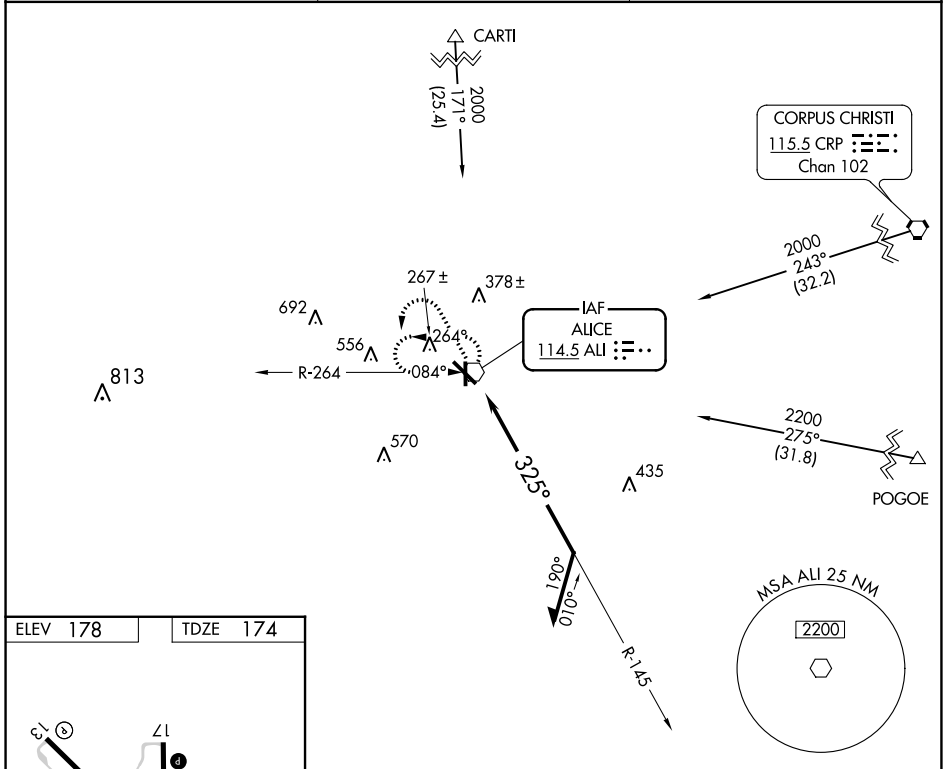
VOR RWY 31

ALICE INTL (ALI)

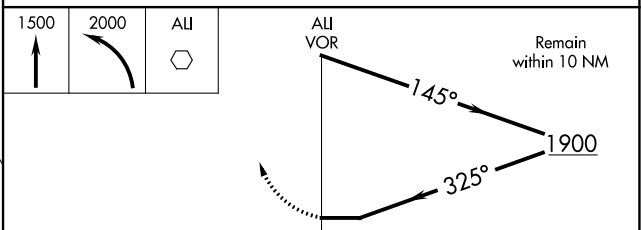
▽ When local altimeter setting not received, use Nueces County altimeter setting; increase all MDA 60 feet and visibility S-31 Cats C and D and Circling Cat D ¼ SM. For inop ALS, increase S-31 Cats C and D visibility to 1¾ SM. For inop ALS when using Nueces County altimeter setting, increase S-31 Cats C and D visibility to 1¾ SM.

▲ MALS MISSED APPROACH: Climb to 1500 then climbing left turn to 2000 direct ALI VOR and hold.

ASOS 119.225	KINGSVILLE APP CON ★ 119.9 290.45	UNICOM 123.0 (CTAF) ①
------------------------	---	---------------------------------



ELEV 178	TDZE 174
REIL Rwy 13 ①	
MIRL Rwy 13-31 and 17-35 ①	



CATEGORY	A	B	C	D
S-31	620-¾	446 (500-¾)	620-1	446 (500-1)
CIRCLING	620-1 442 (500-1)	640-1 462 (500-1)	700-1½ 522 (600-1½)	900-2¼ 722 (800-2¼)

SC-3, 08 AUG 2024 to 05 SEP 2024

SC-3, 08 AUG 2024 to 05 SEP 2024