

DELAND, FLORIDA

AL-483 (FAA)

23278

WAAS CH <b>45700</b> <b>W23A</b>	APP CRS <b>234°</b>	Rwy Idg TDZE Apt Elev	<b>4301</b> <b>78</b> <b>79</b>
--	------------------------	-----------------------------	---------------------------------------

# RNAV (GPS) RWY 23

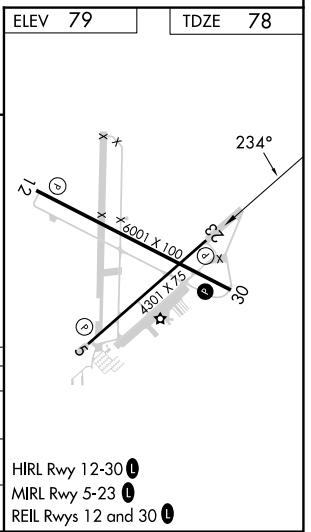
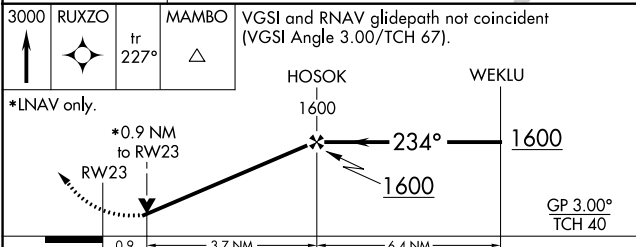
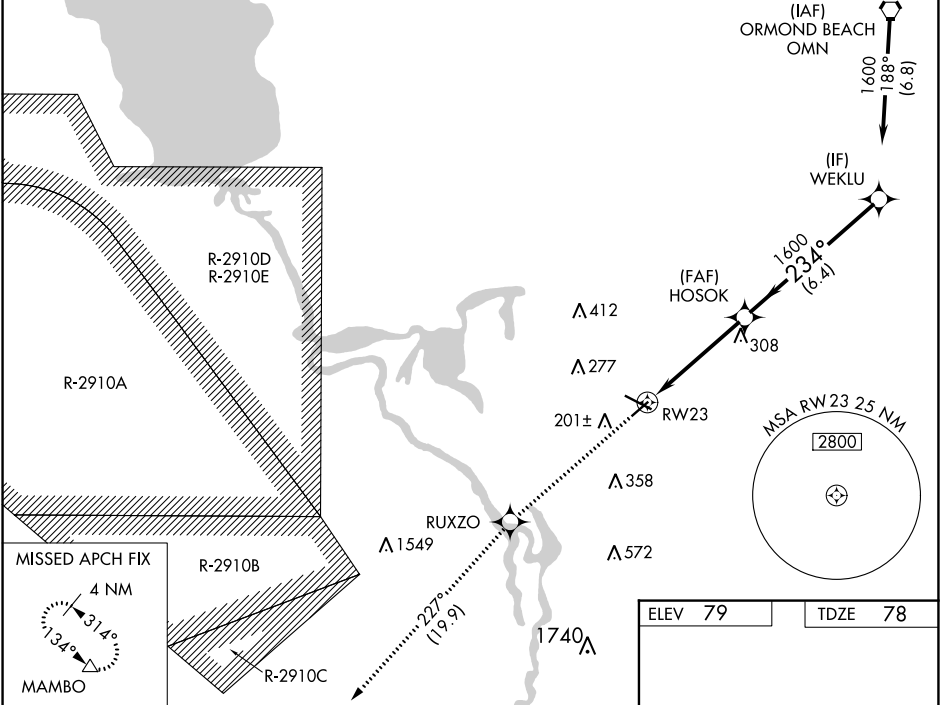
DELAND MUNI-SIDNEY H TAYLOR FLD (DED)

RNP APCH.

▼ For uncompensated Baro-VNAV systems, LNAV/VNAV NA below -15°C (5°F) or above 54°C (130°F).  
 ▲ Baro-VNAV and VDP NA when using Daytona Beach Intl altimeter setting. Rwy 23 helicopter visibility reduction below 3/4 SM NA. When local altimeter setting not received, use Daytona Beach Intl altimeter setting and increase all DA 38 feet and all MDA 40 feet, increase LPV visibility 1/8 SM all Cats.

MISSED APPROACH:  
 Climb to 3000 direct RUXZO and on track 227° to MAMBO and hold.

AWOS-3 <b>119.575</b>	DAYTONA APP CON <b>125.35 322.3</b>	UNICOM <b>123.075 (CTAF) 0</b>
--------------------------	--	-----------------------------------



CATEGORY	A	B	C	D
LPV DA	374-1		296 (300-1)	
LNAV/VNAV DA	414-1 1/4		336 (400-1 1/4)	
LNAV MDA	420-1		342 (400-1)	

HIRL Rwy 12-30  
 MRL Rwy 5-23  
 REIL Rwy 12 and 30

SE-3, 08 AUG 2024 to 05 SEP 2024

SE-3, 08 AUG 2024 to 05 SEP 2024

DELAND, FLORIDA  
Orig-B 18JUL19

29°04'N-81°17'W

# DELAND MUNI-SIDNEY H TAYLOR FLD (DED) RNAV (GPS) RWY 23