

LOC/DME I-FMNM 111.9 Chan 56	APP CRS 256°	Rwy Idg 6248	TDZE 5507	Apt Elev 5507
---	------------------------	------------------------	---------------------	-------------------------

ILS or LOC RWY 25

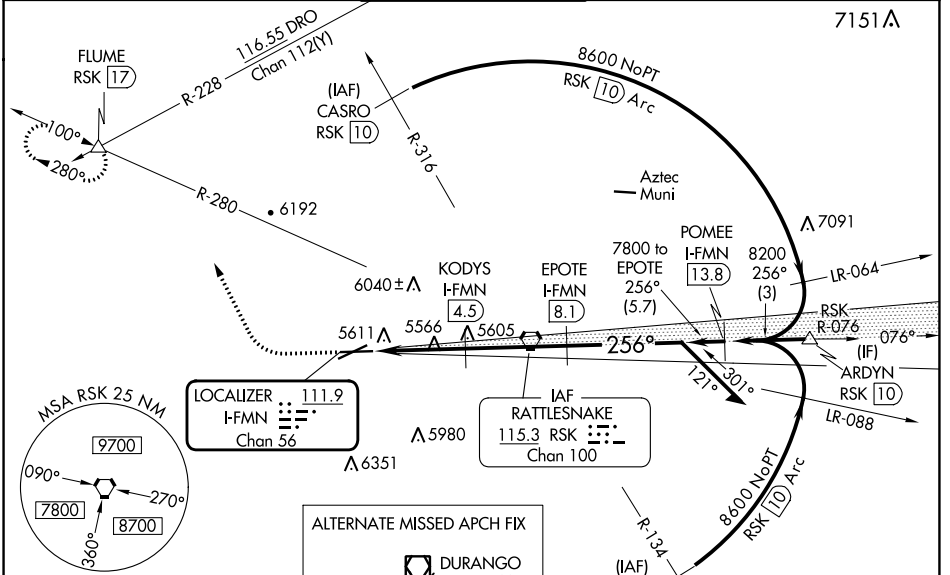
FOUR CORNERS RGNL (FMN)

DME required.

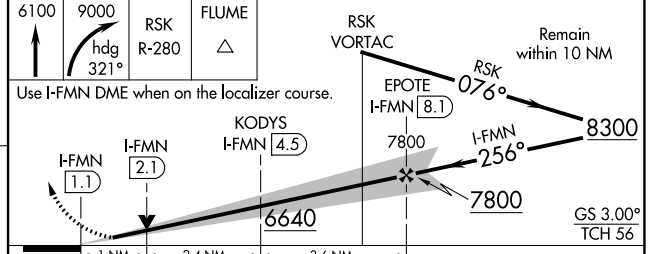
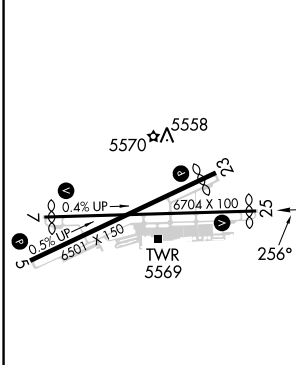
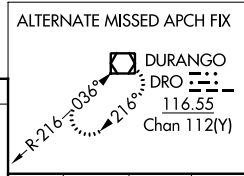
VDP N/A with Durango altimeter setting. Circling N/A for Cat D southeast of Rwy 5 and south of Rwy 25. When local altimeter setting not received, use Durango altimeter setting and increase S-ILS 25 DA to 5950 feet and all visibilities $\frac{1}{2}$ SM; increase all MDAs 260 feet and S-LOC 25 visibility Cat C/D $\frac{3}{4}$ SM, and Circling visibility Cat B $\frac{1}{4}$ SM and Cat C $\frac{1}{2}$ SM.

MISSED APPROACH: Climb to 6100 then climbing right turn to 9000 on heading 321° and on RSK VORTAC R-280 to FLUME INT and hold, continue climb-in-hold to 9000.

ATIS 127.15	DENVER CENTER 118.575 348.7	FARMINGTON TOWER* 118.9 (CTAF) 257.8	GND CON 121.7	UNICOM 122.95
-----------------------	---------------------------------------	---	-------------------------	-------------------------



ELEV 5507	D	TDZE 5507
-----------	----------	-----------



REIL Rws 23 and 25	MIRL Rws 5-23 and 7-25	FAF to MAP 7 NM			
Knots	60	90	120	150	180
Min:Sec	7:00	4:40	3:30	2:48	2:20
CIRCLING	6020-1 513 (600-1)	6140-1 633 (700-1)	6380-2½ 873 (900-2½)	6400-3 893 (900-3)	

SW-1, 08 AUG 2024 to 05 SEP 2024

SW-1, 08 AUG 2024 to 05 SEP 2024