

VORTAC RSK <b>115.3</b> Chan <b>100</b>	APP CRS <b>072°</b>	Rwy Idg TDZE <b>5502</b> Apt Elev <b>5507</b>
---	------------------------	---

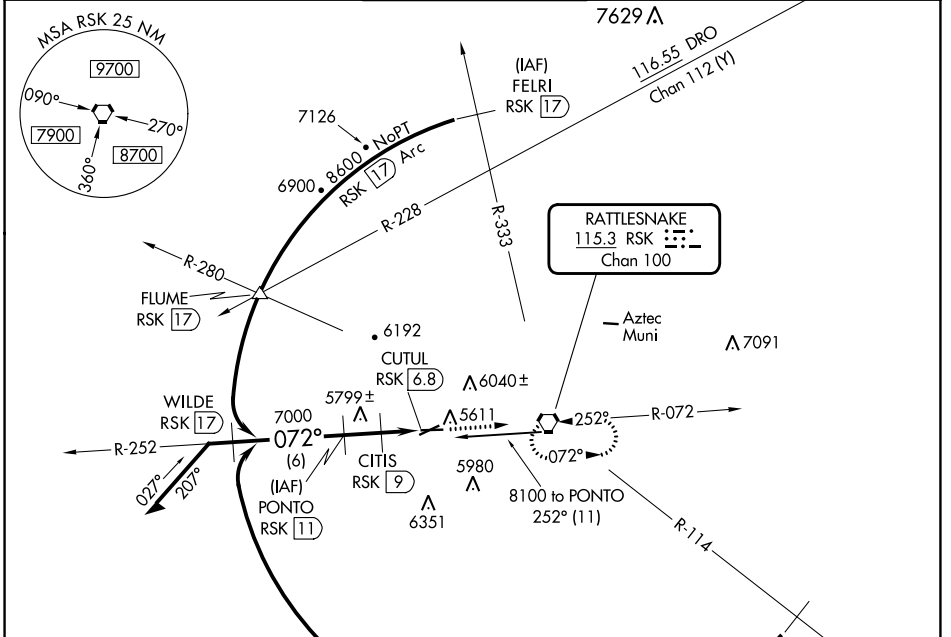
# VOR/DME RWY 7

FOUR CORNERS RGNL (FMN)

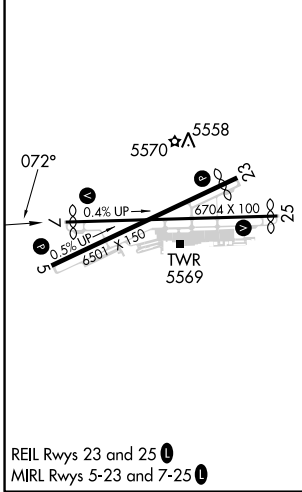
**⚠** Circling NA for Cat D southeast of Rwy 5 and south of Rwy 25. VDP NA when using Durango altimeter setting. When local altimeter not received, use Durango altimeter setting and increase all MDAs 260 feet and visibility S-7 Cat C/D and Circling Cats A/B/C ¾ SM.

**MISSED APPROACH:**  
Climb to 8300 direct RSK VORTAC and hold.

ATIS <b>127.15</b>	DENVER CENTER <b>118.575 348.7</b>	FARMINGTON TOWER* <b>118.9 (CTAF) 0 257.8</b>	GND CON <b>121.7</b>	UNICOM <b>122.95</b>
-----------------------	---------------------------------------	--	-------------------------	-------------------------



ELEV 5507	D	TDZE 5502
-----------	---	-----------



VGSi and descent angles not coincident (VGSi Angle 3.00/TCH 50).		8300	RSK
		↑	⬡
		8000	7000
		6300	
		252°	072°
		3.28% TCH 52	
		2 NM	1 NM
		1.2 NM	
CATEGORY	A	B	C
S-7	5920-1	418 (500-1)	5920-1½ 418 (500-1½)
CIRCLING	6100-1 593 (600-1)	6180-1 673 (700-1)	6380-2½ 873 (900-2½) 6460-3 953 (1000-3)

SW-1, 08 AUG 2024 to 05 SEP 2024

SW-1, 08 AUG 2024 to 05 SEP 2024