

HI-TACAN Z RWY 3L

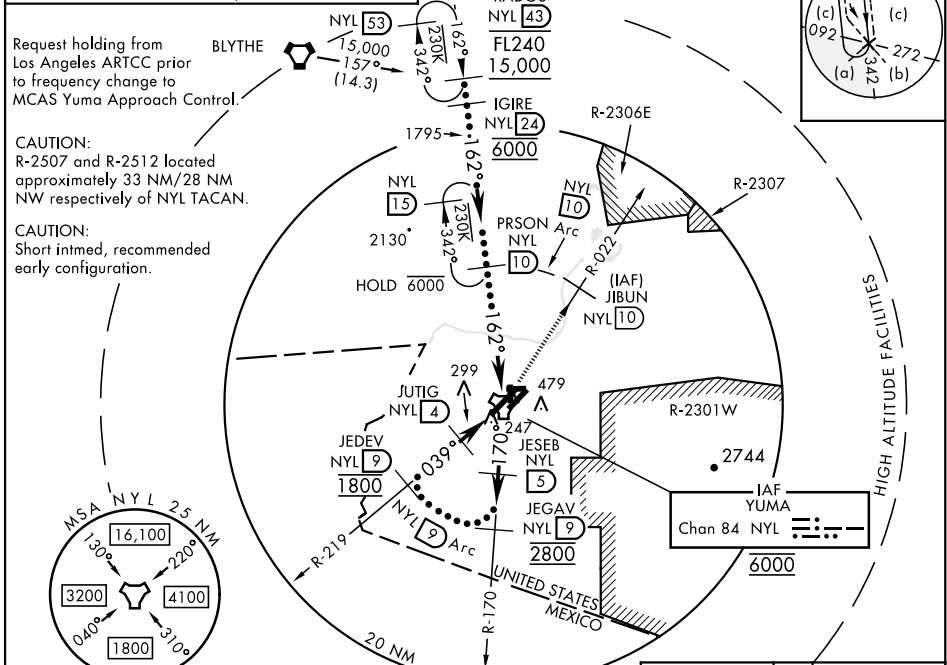
TACAN NYL Chan 84	APCH CRS 039°	Rwy Idg 13,300 TDZE 195 Arprt Elev 213	AL-511 [USN]	YUMA MCAS/YUMA INTL (KNYL)
-----------------------------	-------------------------	---	--------------	----------------------------

MISSJ APPROACH: Climbing left turn to 4000, intercept NYL TACAN R-022 to JIBUN, cross JIBUN at or above 4000.

ATIS★ 118.8 273.5	APP CON 124.7 371.975	TOWER★ 119.3 (CTAF) 0 377.075	GND CON 121.9 314.0	CLNC DEL 118.0 336.4	ASR/ PAR
-----------------------------	---------------------------------	---	-------------------------------	--------------------------------	-------------

Knots	60	120	180	240	300	360
V/V(fpm)	325	650	975	1300	1625	1950

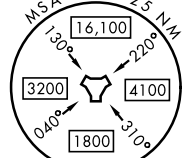
ATC climb of 325 ft/NM to 4000



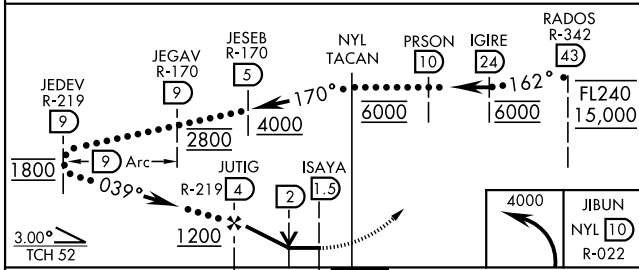
Request holding from BLYTHE (hexagon symbol) Los Angeles ARTCC prior to frequency change to MCAS Yuma Approach Control.

CAUTION:
R-2507 and R-2512 located approximately 33 NM/28 NM NW respectively of NYL TACAN.

CAUTION:
Short intmd, recommended early configuration.

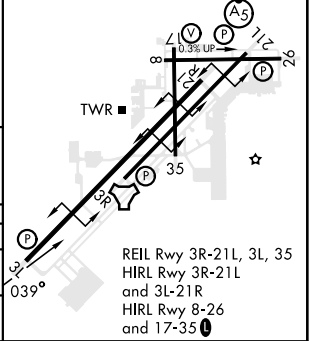


EMERG SAFE ALT 100 NM 17,100



ELEV 213	TDZE 195
----------	----------

3L-21R	13,300 x 200
3R-21L	9239 x 150
8-26	6146 x 150
17-35	5710 x 150



REIL Rwy 3R-21L, 3L, 35
HIRL Rwy 3R-21L and 3L-21R
HIRL Rwy 8-26 and 17-35

HI-TACAN Z RWY 3L

SW-4, 08 AUG 2024 to 05 SEP 2024

SW-4, 08 AUG 2024 to 05 SEP 2024