

YUMA, ARIZONA

23222

VOR RWY 17

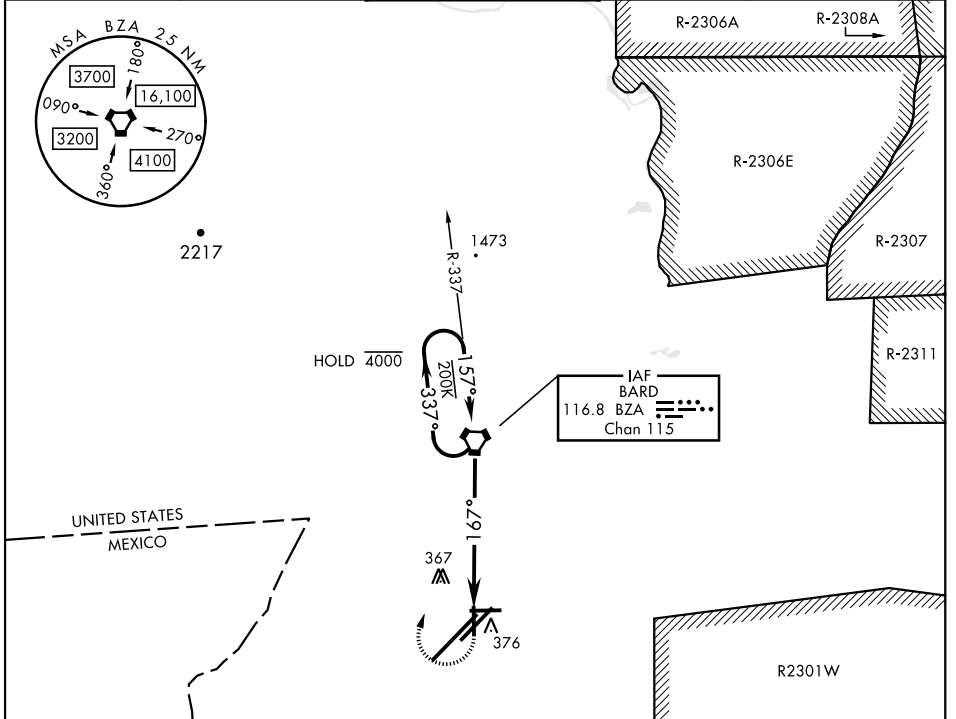
VORTAC BZA 116.8 Chan 115	APCH CRS 167°	Rwy Idg TDZE Arprt Elev 5710 197 213
---	-------------------------	--

AL-511 [USN]

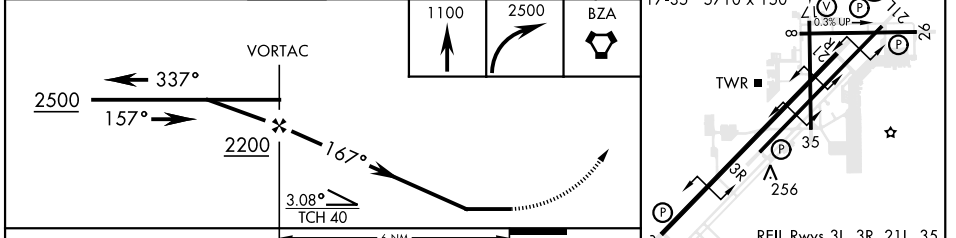
YUMA MCAS/YUMA INTL (KNYL)

MISSED APPROACH: Climb to 1100, then climbing right turn to 2500 direct BZA VORTAC and hold.

ATIS★ 118.8 273.5	APP CON 124.7 371.975	TOWER★ 119.3 (CTAF) 0 377.075	GND CON 121.9 314.0	CLNC DEL 118.0 336.4	ASR/ PAR
-----------------------------	---------------------------------	--	-------------------------------	--------------------------------	-------------



ELEV 213	TDZE 197
3L-21R 13,300 x 200	167°
3R-21L 9239 x 150	0.3% UP
8-26 6146 x 150	AS 112
17-35 5710 x 150	35



CATEGORY	A	B	C	D
S-17	660-1 463 (500-1)	(500-1)	NA	
CIRCLING	680-1 467 (500-1)	700-1 487 (500-1)	NA	

FAF to MAP 6.0 NM					
Knots	60	90	120	150	180
Min:Sec	6:00	4:00	3:00	2:24	2:00

YUMA, ARIZONA
Amdt 4 22APR21

32°39'N-114°36'W

YUMA MCAS/YUMA INTL (KNYL)

VOR RWY 17

SW-4, 08 AUG 2024 to 05 SEP 2024

SW-4, 08 AUG 2024 to 05 SEP 2024