

APP CRS	Rwy Idg	<b>4750</b>
<b>297°</b>	TDZE	<b>1439</b>
	Apt Elev	<b>1442</b>

# RNAV (RNP) RWY 30

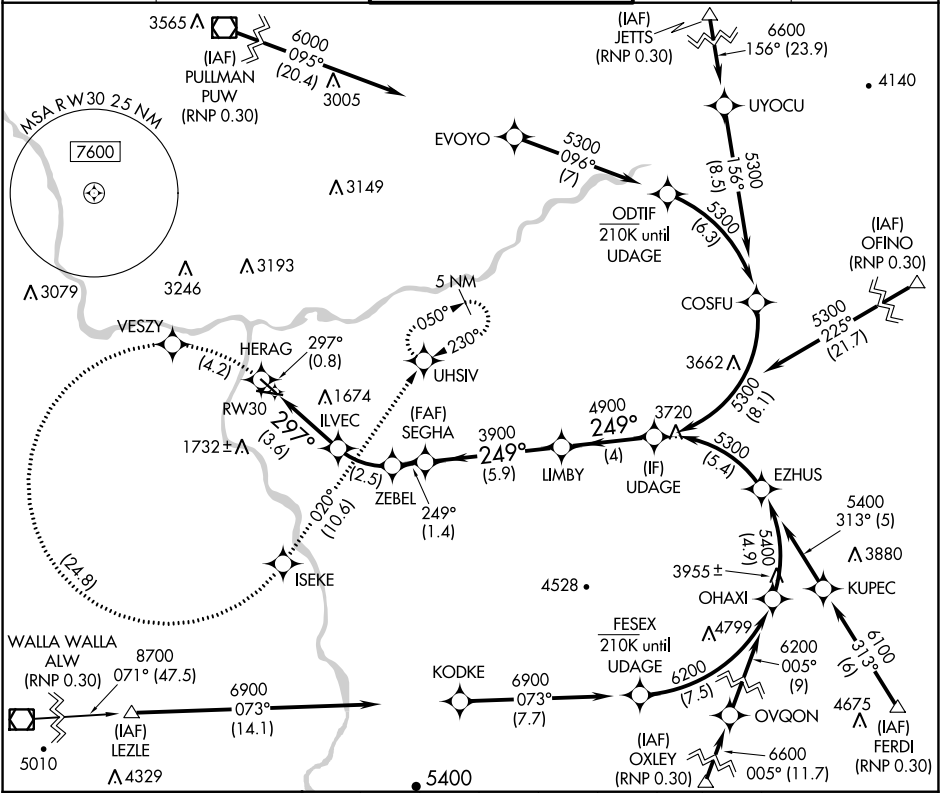
LEWISTON/NEZ PERCE COUNTY (LWS)

RNP AR APCH-GPS.

For uncompensated Baro-VNAV systems, procedure NA below -12°C or above 54°C.  
Missed approach requires RNP less than RNP 1.00.

MISSED APPROACH: Climb to 6000 on track 297° to HERAG then left turn to VESZY then left turn to ISEKE and track 020° to UHSIV and hold.

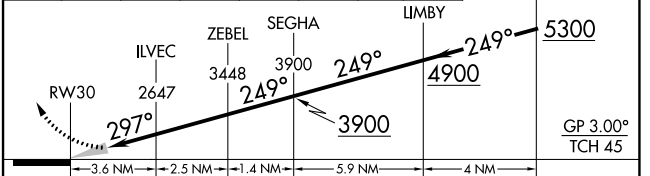
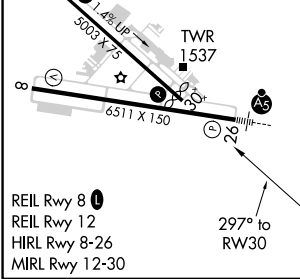
ASOS <b>135.575</b>	SEATTLE CENTER <b>123.95 290.55</b>	LEWISTON TOWER ★ <b>119.4 (CTAF) 318.8</b>	GND CON <b>121.9</b>	UNICOM <b>122.95</b>
------------------------	----------------------------------------	-----------------------------------------------	-------------------------	-------------------------



NW-1, 08 AUG 2024 to 05 SEP 2024

NW-1, 08 AUG 2024 to 05 SEP 2024

ELEV 1442	<b>D</b>	TDZE 1439	6000	HERAG	VESZY	ISEKE	UHSIV
			↑	↶	↶	↶	tr 020°



CATEGORY	A	B	C	D
RNP 0.30 DA	1781-1	342 (400-1)		

**AUTHORIZATION REQUIRED**