

RNAV (RNP) Z RWY 12

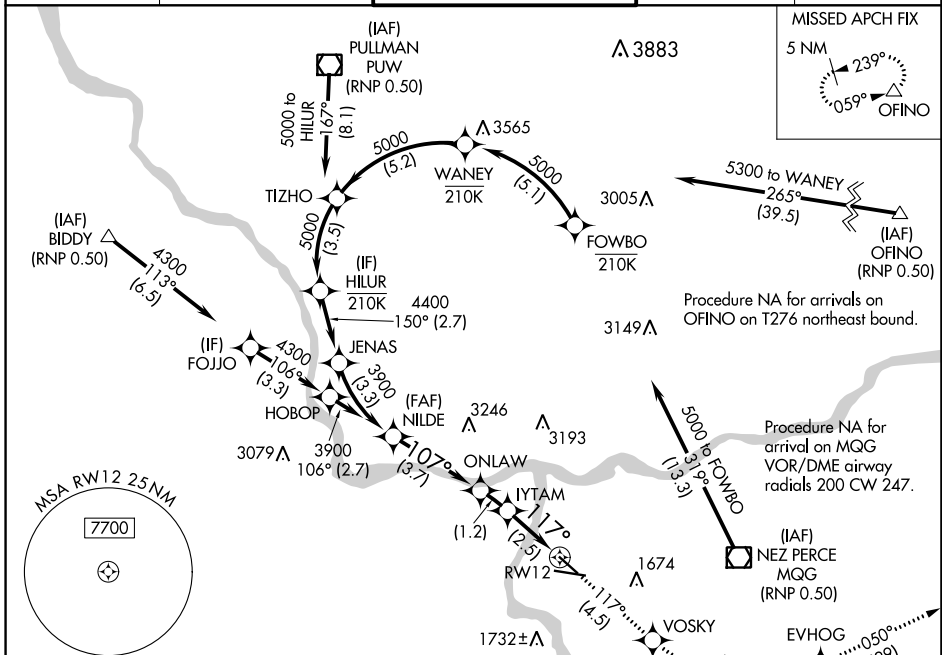
LEWISTON/NEZ PERCE COUNTY (LWS)

APP CRS	Rwy Idg	4750
117°	TDZE	1417
	Apt Elev	1442

RNP AR APCH-GPS.
 ▼ For uncompensated Baro-VNAV systems, procedure NA below -12°C or above 54°C.

MISSED APPROACH: Climb to 6000 on track 117° to VOSKY then left turn 6000 to EVHOG and on track 050° to OFINO and hold.
 *Missed approach requires minium climb of 260 feet per NM to 3400.

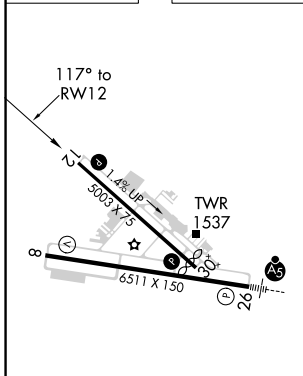
ASOS 135.575	SEATTLE CENTER 123.95 290.55	LEWISTON TOWER ★ 119.4 (CTAF) 0 318.8	GND CON 121.9	UNICOM 122.95
------------------------	--	---	-------------------------	-------------------------



NW-1, 08 AUG 2024 to 05 SEP 2024

NW-1, 08 AUG 2024 to 05 SEP 2024

ELEV	1442	D	TDZE	1417
------	-------------	---	------	-------------



- REIL Rwy 8
- REIL Rwy 12
- HIRL Rwy 8-26
- MIRL Rwy 12-30

6000	VOSKY	6000	EVHOG	tr 050°	OFINO
tr 117°	▲	↪	▲		△
ONLAW		VGSi and RNAV glidepath not coincident (VGSi Angle 3.00/TCH 40).			
3900	107°	IYTAM	117°	RW12	
GP 3.10°	See Planview for multiple IF locations.	2659	2254		
3.7 NM		1.2	2.5 NM		

CATEGORY	A	B	C	D
RNP 0.30 DA*	1685-7 ⁸ / ₈		268 (300-7 ⁸ / ₈)	
RNP 0.30 DA	1889-1 ³ / ₈		472 (500-1 ³ / ₈)	

AUTHORIZATION REQUIRED