

APP CRS 084°	Rwy Idg 6511
	TDZE 1440
	Apt Elev 1442

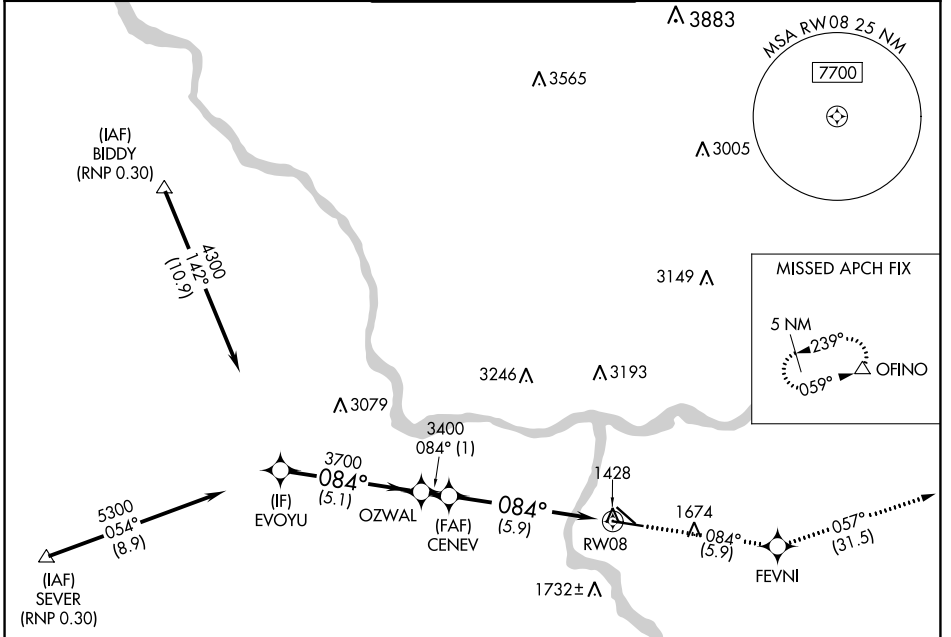
RNAV (RNP) Z RWY 8

LEWISTON/NEZ PERCE COUNTY (LWS)

GPS required. For uncompensated Baro-VNAV systems, procedure NA below -16°C (3°F) or above 46°C (115°F). When VGSI inop, procedure NA at night.

MISSED APPROACH: Climb to 6000 via track 084° to FEVNI and via track 057° to OFINO and hold.

ASOS 135.575	SEATTLE CENTER 123.95 290.55	LEWISTON TOWER ★ 119.4 (CTAF) 0 318.8	GND CON 121.9	UNICOM 122.95
------------------------	--	---	-------------------------	-------------------------

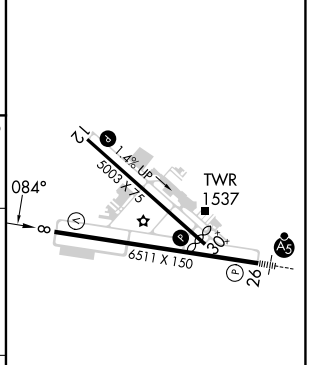
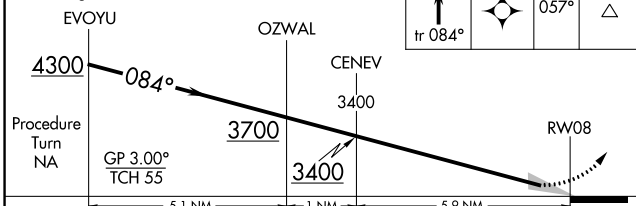


NW-1, 08 AUG 2024 to 05 SEP 2024

NW-1, 08 AUG 2024 to 05 SEP 2024

ELEV 1442	TDZE 1440
-----------	-----------

VGSI and RNAV glidepath not coincident (VGSI Angle 3.00/TCH 45).



CATEGORY	A	B	C	D
RNP 0.30 DA	1752-1 312 (400-1)			

REIL Rwy 8
REIL Rwy 12
HIRL Rwy 8-26
MIRL Rwy 12-30

AUTHORIZATION REQUIRED