

LOC/DME I-LEI 108.5 Chan 22	APP CRS 234°	Rwy Idg 7500 TDZE 435 Apt Elev 435
---	------------------------	---

ILS or LOC RWY 23L

RALEIGH-DURHAM INTL (RDU)

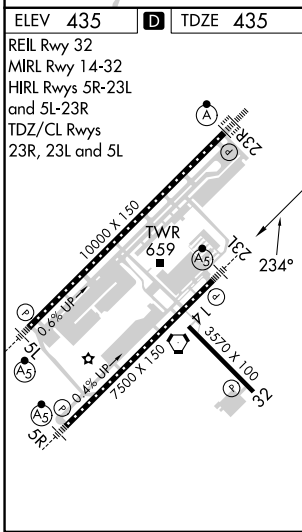
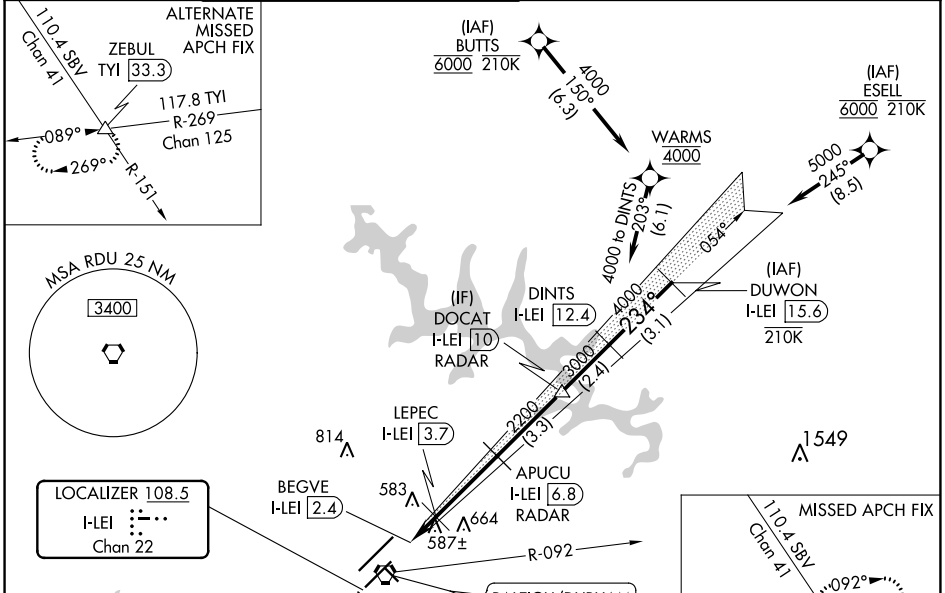
RNAV 1-DME/DME/IRU or GPS or RADAR required for procedure entry.
DME required for LOC only.



MISSED APPROACH: Climb to 1100 then climbing left turn to 2600 on heading 050° and RDU VORTAC R-092 to ZEBUL INT and hold.

⚠ Simultaneous approach authorized. For inop ALS, increase S-ILS 23L all Cats visibility to RVR 5500. Localizer unusable for coupled approaches below 1100 or within 2 NM of threshold.

D-ATIS 123.8	RALEIGH APP CON 127.675 307.9	(EAST) RALEIGH TOWER 127.45 257.8 Rwys 5R-23L and 14-32	(WEST) RALEIGH TOWER 119.3 257.8 Rwy 5L-23R	(EAST) GND CON 121.9 348.6 Rwys 5R-23L and 14-32	(WEST) GND CON 121.7 348.6 Rwy 5L-23R	CLNC DEL 120.1	CPDLC
------------------------	---	--	--	---	--	--------------------------	-------



ELEV 435	TDZE 435	REIL Rwy 32	MIRL Rwy 14-32	HIRL Rwys 5R-23L and 5L-23R	TDZ/CL Rwys 23R, 23L and 5L
1100	2600	RDU R-092	ZEBUL	Localizer unusable from 1 NM from threshold.	DUWON I-LEI [15.6]
* LOC only.					
BEGVE I-LEI [2.4]	LEPEC I-LEI [3.7]	2200	APUCU I-LEI [6.8] RADAR	DOCAT I-LEI [10] RADAR	DINTS I-LEI [12.4]
1200*	2200	3000	3000	4000	5000
GS 3.00° TCH 56					
1 NM 1.3 NM 3.1 NM 3.3 NM 2.4 NM 3.1 NM					
CATEGORY	A	B	C	D	
S-ILS 23L	806/35		371 (400-5/8)		
S-LOC 23L	840/40		405 (500-3/4)		
C CIRCLING	960-1 1/4	525 (600-1 1/4)	1020-1 1/2	1180-2 1/2	
			585 (600-1 1/2)	745 (800-2 1/2)	

SE-2, 08 AUG 2024 to 05 SEP 2024

SE-2, 08 AUG 2024 to 05 SEP 2024