


APP CRS	Rwy Idg	<b>10000</b>
<b>054°</b>	TDZE	<b>384</b>
	Apt Elev	<b>435</b>

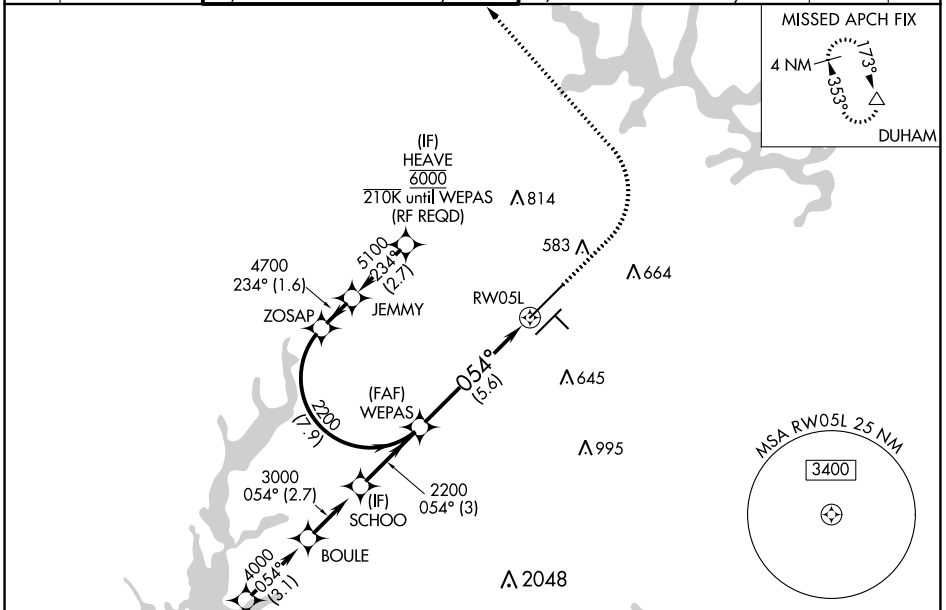
# RNAV (RNP) Z RWY 5L

RALEIGH-DURHAM INTL (RDU)

RNP AR APCH-GPS.  
 ▼ For uncompensated Baro-VNAV systems, procedure NA below -1°C or above 54°C.  
 Simultaneous approach authorized, except for arrivals at HEAVE. For inop ALS, increase RNP 0.10 all Cats visibility to RVR 4500.

MALSR  MISSED APPROACH:  
 Climb to 1000 then climbing left turn to 2200 direct DUHAM and hold.

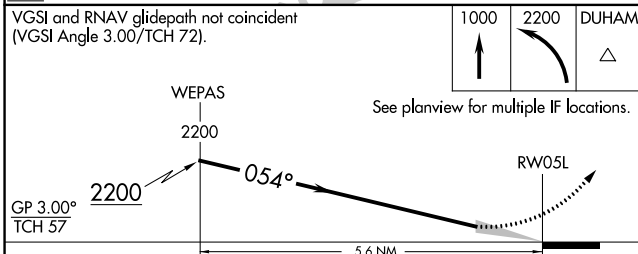
D-ATIS	RALEIGH APP CON	(EAST) RALEIGH TOWER (WEST)	(EAST) GND CON	(WEST)	CLNC DEL	CPDLC
<b>123.8</b>	<b>127.675 307.9</b>	<b>127.45 257.8</b> Rwys 5R-23L and 1-4-32	<b>119.3 257.8</b> Rwy 5L-23R	<b>121.9 348.6</b> Rwys 5R-23L and 1-4-32	<b>121.7 348.6</b> Rwy 5L-23R	<b>120.1</b>



SE-2, 08 AUG 2024 to 05 SEP 2024

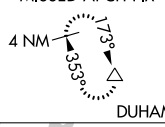
SE-2, 08 AUG 2024 to 05 SEP 2024

(IAF) OTTOS  
 6000 210K  
 (IAF) CHWDR 210K  
 5000 0.68° (6.4)  
 (IAF) BOULE  
 4000 0.54° (6.1)  
 (IF) SCHOO  
 2200 0.54° (3)  
 (FAF) WEPAS  
 2700 (7.9)  
 (IF) HEAVE 6000  
 210K until WEPAS (RF REQD)  
 4700 234° (1.6)  
 5100 234° (2.7)  
 ZOSAP  
 JEMMY  
 RW05L  
 583 A  
 664 A  
 645 A  
 995 A  
 2048 A



CATEGORY	A	B	C	D
RNP 0.10 DA		684/24	300 (300-½)	
RNP 0.30 DA		780/35	396 (400-⅙)	

## AUTHORIZATION REQUIRED

MISSED APCH FIX  
 4 NM  
  
 DUHAM

MSA RW05L 25 NM  
 3400  
