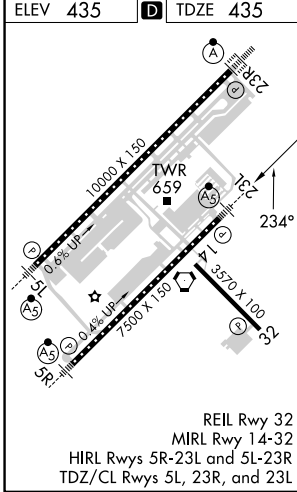
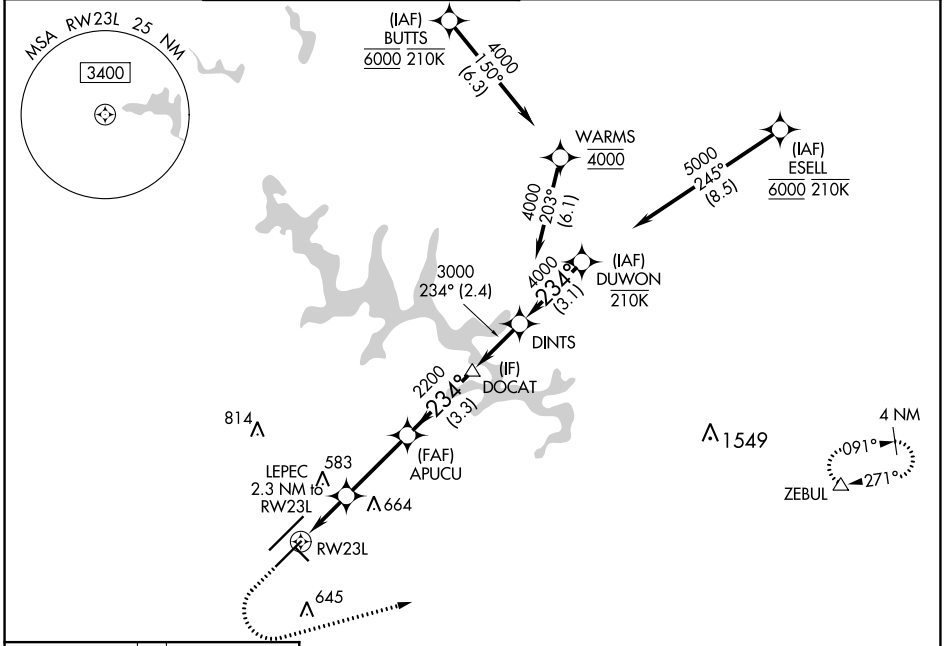


WAAS CH <b>65713</b> <b>W23B</b>	APP CRS <b>234°</b>	Rwy Idg TDZE <b>435</b> Apt Elev <b>435</b>
--	------------------------	---

# RNAV (GPS) Y RWY 23L

RALEIGH-DURHAM INTL (RDU)

RNP APCH-GPS.		MALSR	MISSED APPROACH: Climb to 1100 then climbing left turn to 2600 direct ZEBUL and hold.		
<p>▼ Simultaneous approach authorized. LNAV procedure NA during simultaneous operations. For uncompensated Baro-VNAV systems, LNAV/VNAV NA below -1.2°C or above 5.4°C. Use of FD or AP required during simultaneous operations. For inop ALS, increase LNAV Cat C/D visibility to 1 3/8 SM.</p>					
D-ATIS	RALEIGH APP CON	(EAST) RALEIGH TOWER (WEST)	(EAST) GND CON (WEST)	CLNC DEL	CPDLC
<b>123.8</b>	<b>127.675 307.9</b>	<b>127.45 257.8</b> Rwys 5R-23L and 14-32	<b>119.3 257.8</b> Rwy 5L-23R	<b>121.9 348.6</b> Rwys 5R-23L and 14-32	<b>121.7 348.6</b> Rwy 5L-23R



ELEV 435	TDZE 435	1100	2600	ZEBUL	DUWON
		* LNAV only.			
		LEPEC 2.3 NM to RWY 23L	APUCU 2200	DOCAT	DINTS 3000
		* 1.4 NM to RWY 23L			DUWON 5000
		1200*	2200	234°	GP 3.00°
		1.4 NM	0.9 NM	3.1 NM	TCH 56
CATEGORY	A	B	C	D	
LPV DA	635/18		200 (200-1/2)		
LNAV/VNAV DA	820/35		385 (400-5/8)		
LNAV MDA	920/24	485 (500-1/2)	920/50	485 (500-1)	
CIRCLING	960-1	525 (600-1)	1020-1 1/2	1180-2 1/2	
			585 (600-1 1/2)	745 (800-2 1/2)	

SE-2, 08 AUG 2024 to 05 SEP 2024

SE-2, 08 AUG 2024 to 05 SEP 2024