

WNSKI TWO DEPARTURE

AL-546 (FAA)

SW-4, 08 AUG 2024 to 05 SEP 2024

SW-4, 08 AUG 2024 to 05 SEP 2024

PHOENIX DEP CON
133.575 281.55
ATIS
127.2
CLNC DEL
119.25
GND CON
121.7
PRESCOTT TOWER ★
125.3 257.9

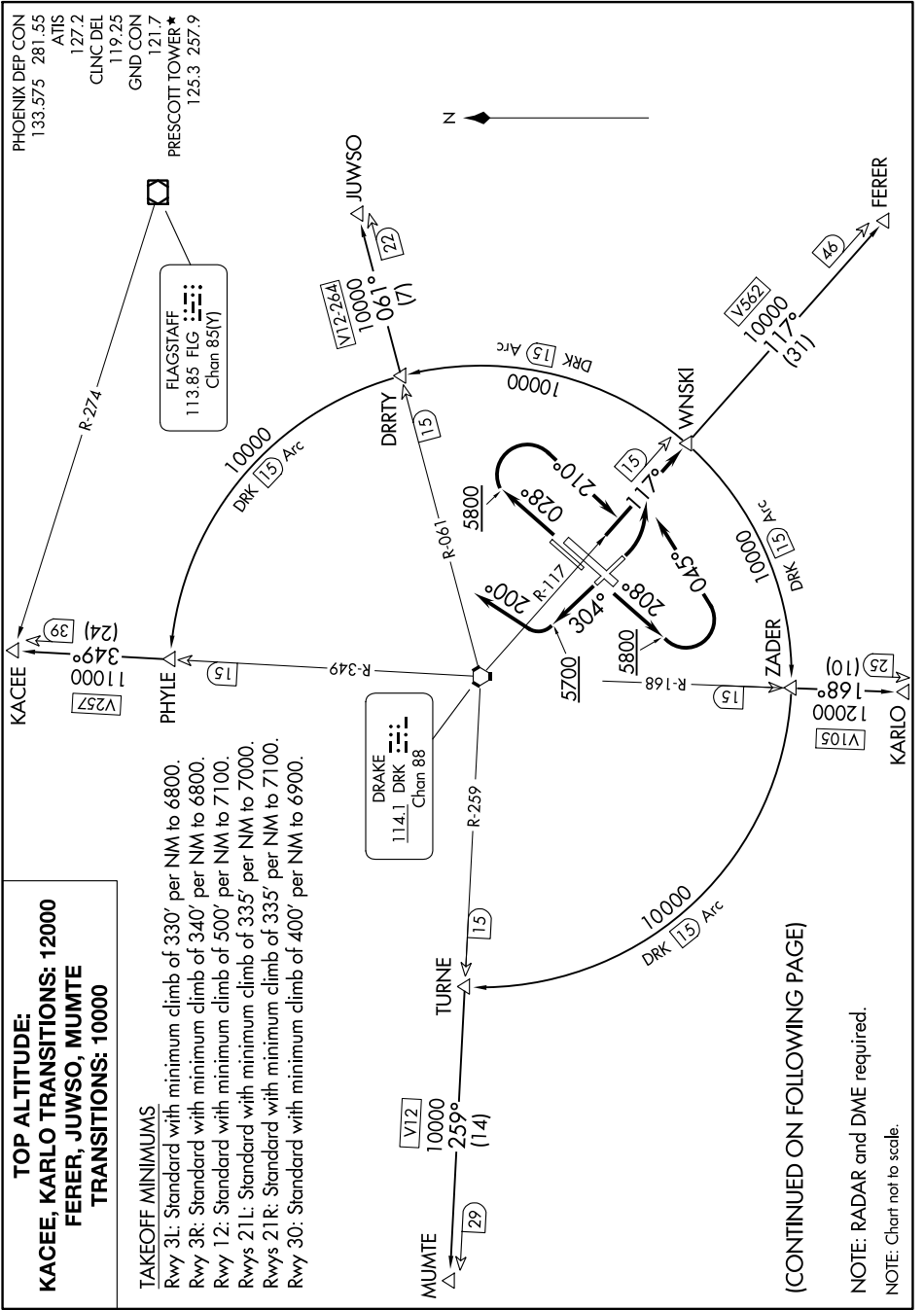
FLAGSTAFF
113.85 FLG
Chan 83Y

DRAKE
114.1 DRK
Chan 88

TOP ALTITUDE:
KACEE, KARLO TRANSITIONS: 12000
FERER, JUWSO, MUMTE
TRANSITIONS: 10000

TAKEOFF MINIMUMS

- Rwy 3L: Standard with minimum climb of 330' per NM to 6800.
- Rwy 3R: Standard with minimum climb of 340' per NM to 6800.
- Rwy 12: Standard with minimum climb of 500' per NM to 7100.
- Rwys 21L: Standard with minimum climb of 335' per NM to 7000.
- Rwys 21R: Standard with minimum climb of 335' per NM to 7100.
- Rwy 30: Standard with minimum climb of 400' per NM to 6900.



(CONTINUED ON FOLLOWING PAGE)

NOTE: RADAR and DME required.

NOTE: Chart not to scale.